



Northwest Designer Craftsmen

www.nwdc-online.org

Facebook: <https://www.facebook.com/pages/Northwest-Designer-Craftsmen-NWDC/355877767779930?sk=wall>

NWDC online calendar: <http://www.nwdc-online.org/calendar/>

Members' Only Site: <https://sites.google.com/site/nwdesignercraftsmen>



Meetings & Speakers

Phinney Neighborhood Center Program: 2nd Wed. of the month
Board meetings 5:30-7 (open to everyone) Speaker 7-8 pm / Social Time 8-9 pm

Nov. 12 Larry Halvorsen



Larry Halvorsen, a prolific ceramic sculptor, found the canvas for his compulsive doodles after visiting the UW Ceramics Department while studying Fisheries. Larry will discuss his evolution from wheel throwing functional pottery to altered forms with carved and patterned surfaces reminiscent of geological formations, ancient glyphs, and Native American arts encounter in childhood travels in the southwest US.

His sculptural constructions combine a variety of hand-building techniques. The works are surfaced with black slip or glaze, and using the classic technique of sgraffito, "I carve through the slip or glaze exposing the natural clay beneath. The carving on all of my pieces is the result of a lifelong exploration of line and pattern."

Larry has balanced teaching community and college classes with studio and commission projects. His work is represented in shops, galleries and installations nationally with a recent installation at the Renaissance Hotel, Barcelona, Spain.



President's Letter

“Being president of NWDC is something everyone should do once.”

--Phillip Baldwin, past president of NWDC

Wise words for an all-volunteer organization.

As I approach the fulfillment of my two year term, I find I am ready to hand the baton to the next person. I have done my absolute best while President. It has been challenging and satisfying. It is an experience I recommend. I guarantee that whoever takes on being President will grow in the job: in contacts, friendship, confidence, and life experience.

I became NWDC President because it looked like no one else was going to fill the void and I wanted NWDC to exist. It was an action propelled more by my commitment to NWDC than executive experience. I saw the opportunity to stand for something larger than myself. (This is a good thing.) It came at a time when my life was far from perfect: NWDC provided me a much-needed positive focus for my energies. Also, it was a matter of timing: if I wanted to make this contribution in this lifetime, now was the window of opportunity.

Overall, I have loved being President because this organization matters to me in a way no other organization ever has. Bottom line, NWDC creates a world I want to be in. It offers an environment that honors the life path of making, allows for a wide latitude in what that life path might look like, values visual and technical innovation and offers on-going support and community. The more I see of NWDC members, the more I find to admire. There is a depth to this group, individually and collectively.

NWDC is worth all kinds of effort. But as president, I found I needed a particular kind of discipline: it's important to protect one's studio time. If we sacrifice our work for being on the board... well, then no one will ever want to volunteer. This is why I think it is best if Presidents serve their two year term and pass the baton. My vision is the NWDC Presidency as a privilege, not a burden. It is healthiest for the volunteers, and for the organization, to share the responsibilities and opportunities of leadership.

I recount all of this because I am confident that others also value NWDC. Someone must step up for NWDC to continue.
-Lois Harbaugh

December - and the last issue

The December issue will be the final issue of the NWDC Newsletter. Jan Koutsky will retire from being the newsletter editor at the end of this year, and no one has offered to replace her.

Many NWDC members belong to Washington Clay Arts: <http://washingtonclayarts.org/>

Many NWDC members belong to the Metal Arts Guild: www.seattlemetalsguild.org

How do these two organizations maintain their web sites and newsletters? Do they pay for this service? Do they have a volunteer? This is a critical issue for NWDC. Please share your ideas with the NWDC Board. Their names and numbers are on the final page of this newsletter.

State of the NWDC Board

I am proud to say that NWDC has a new Secretary, Patricia Resseguie; a new Hospitality Chair, Crista Matteson; a new Museum Liason, Layne Goldsmith; a new Publicity Chair, Julie Conway; and a new Exhibiton Chair, Gale Lurie. Lin Holley will stay on as Education Chair; Eva Funderburgh will stay on as a technical advisor.

Here's what the NWDC Board still needs for 2015: a new President, new Vice-President, new Newsletter Editor, new Membership Chair. The board needs a mix of long-term members and recently-joined members. It is also good to have some members-at-large on the board -- these are members without a specific Chair.

NWDC finds itself in something of a pickle: because so many departing board members stayed on for 4 years (and I'm so glad they did!), we now find ourselves without a staggered turn-over of the board. For continuity of the NWDC brand, we need some members with a long history in NWDC to volunteer. As a former President, I am willing to stay on the board in another capacity-- if the next President desires that.

To insure continuity of the Treasury, current Treasurer Loren Lukens and current Secretary, Katherine Holzknecht are staying a little longer and working together to create an accounting system on an NWDC computer that will make an easy and more seamless transition for the next Treasurer. Ultimately we will need a new Treasurer. In the meantime, Loren and Katherine will set up this system and then split the treasurer's job -- with Katherine doing the book keeping and Loren reporting at meetings. This is an extremely generous thing for Loren and Katherine to do. Both have been a real ballast during my Presidency and once again they are proving invaluable to the functioning of NWDC.

So there we have it: our beloved organization in transition. I am proud that we have recruited the new board members. There is still time to fill the open positions and create a healthy template for how NWDC passes the baton.

In the past two years, we have completed a major exhibition and catalog. What is before us is plenty of opportunity. We have committed to one exhibition, and we have a plan for a Facebook campaign to publicize NWDC outside of exhibitions. Other than that, the future is wide open and waiting to be created.

-Lois Harbaugh

A Message to Members from Carol Milne

Come on people. Do we need to exhaust our board members, so they never want to serve again?! Lois, our esteemed president, has reached her two-year cut-off point, and is ready to move on. Lorne has been treasurer for over 4 years and also wants to move on. And Jan, our newsletter editor, is done at the end of December ... with or without a replacement.

Step up. Do your part. Share a position if necessary.

Especially for those of you who have work in our 60th show at the Whatcom museum. You've benefitted from the impressive, hard work of your board. NOW IT'S YOUR TURN!

This is a small organization. The NWDC board is not "THEY," it is "US." And "YOU" are a big part of us.

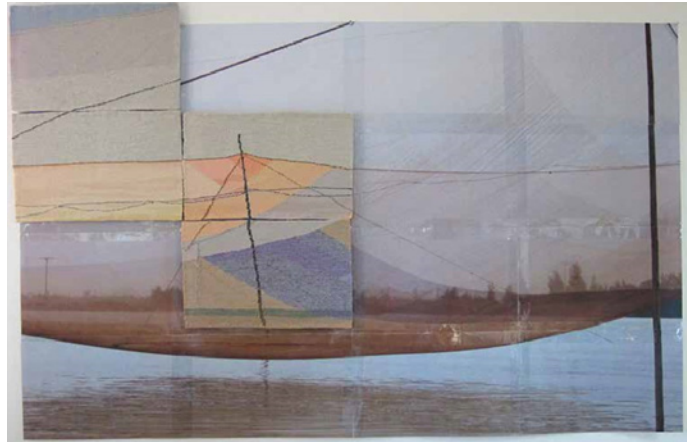
-Carol Milne

What Makes It Art?

by Lois Harbaugh

“As a viewer, I initially strained to get information from this compilation: what is in this landscape?”

Inge Norgaard’s piece in Reaching Beyond is a weaving about a woven item — a net. That, in itself, is a witty idea: contemporary in its self-reference and in its sheer ambition.



The work is based on a photograph the artist took in Vietnam. A grid of woven panels illustrate part of the snapshot; the rest of the image is supplied by a grid of photo copies.

As a viewer, I initially strained to get information from this compilation: what is in this landscape? Only a wonderful “nothingness” — sky and water, mostly the same blue-grey; the horizon, a blurry dark line without much distinction. We focus instead on the net-generated abstraction amidst this large sense of space. The net is stretched over sky and water... it’s barely discernible...almost a veil. The net’s edges, overlaps, and poles fracture the visual field, creating opportunities in the tapestry for subtly shifting areas of color. Woven, wavering lines cross the tapestry with the delicacy of a lightly drawn pencil line and connect with the faint lines in the photocopies. This, along with the grid structure, tie the woven and photo imagery together.

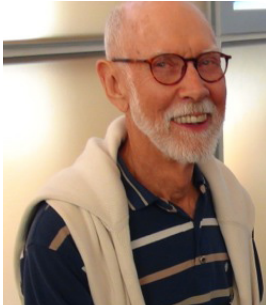
The tapestry panels can stand alone as satisfying pieces. (See IngeNorgaard.com for the entire Net series — with and without photocopy backgrounds.) By giving us the photocopies, the artist is not only expanding our view, she’s letting us in on her source and her process. Weavers often use an image taped behind their warp threads to guide their weaving. They are used to seeing weaving and paper image together.

I called Inge to ask about the tape, barely visible on my computer, holding the paper grid together. Inge said that while exposed tape is outside the canon of usual art practices, it is enjoyable to her for exactly that reason. Plus, the archival tape subtly emphasizes the grid. It works thematically as another transparent net. It echoes the casualness of the taped image behind the warp threads.

What makes Net art is the pleasure it provokes aesthetically and intellectually. Inge’s choice of imagery (rich in visual and metaphorical layers), her aesthetic sensibility (involving sensitive line and sublime color), her grand risk-taking in how she portrayed her subject — all give the viewer an opportunity to explore. It provides an absorbing experience of looking, requiring both eye and mind.

Larry Metcalf spoke at Whatcom Museum on Oct 8 to a full audience. He gave personal remembrances of the Founders, spoke about the role NWDC has played in the region and then led a walk through of the NWDC exhibit from the view point of the exhibition designer.





As part of NWDC's 60th celebration Lloyd Herman gave a talk "How craft became art" at the Whatcom Museum and then signed books for attendees.

"Witty, poignant, versatile: 'Designer Craftsmen at 60'"

A review of our show in the Seattle Times:

http://seattletimes.com/html/thearts/2024795466_designercraftsmenreviewxml.html

Nov 6: Big Day at Whatcom Museum

12:30 PM: Artists Anita Mayer, Lin Rebolini McJunkin, Denise Snyder, and Judy Zugish from NWDC will share details of the materials, methods and meaning of their work in the NWDC show: Reaching Beyond: Northwest Designer Craftsmen at 60. Meet in the Lightcatcher lobby.

5:30-7:30 PM: Openwork Basketry Techniques workshop with Judy Zugish. Cost \$30/\$25 Museum members, includes museum admission and materials. Participants will learn the basics of weaving a small basket in round rattan.

Save the Date! NWDC Holiday Party! Sunday, December 14

The 2014 Holiday Party will be at the beautiful home of Danielle Bodine in Clinton WA. (Seattleites take the ferry from Mukilteo.)

Watch for final details and directions in the December newsletter. We are thinking of a 1:00 start for the party to allow travel in the daylight and time to see Museo Gallery in Langley before the party.

NWDC Web Site Update

Calling all NWDC members to submit images for the website. You can submit up to two: one for the homepage slideshow and one for the members' gallery of your choice. If you would like to be included in the members' gallery, we will also need your artist statement (125 words or less), the gallery you would like to be included in, and your personal website address (optional). Images may be in .jpg or .tif format, at least 72dpi, and a minimum of 400 pixels wide/tall. These are minimum requirements. Feel free to send larger images, which will be formatted accordingly. Please email your files directly to the Website Liaison, Trudee Hill: trudee@trudeehill.com Questions regarding digital image formatting may be sent to Trudee as well.

New Member Applicants for NWDC - November, 2014

During the month of November, all NWDC members will once again have the important opportunity to strengthen our membership and connections with other professional arts organizations by voting for new members. Voting will again be online using Survey Monkey. Details on how to vote will be sent in an email in early November. Below is some information to help you get into Voting Mode, plus a Sneak Preview of the 17 applicants with an image of their work:



1. The first person you will be asked to endorse is for the position of Honorary Membership: Honorary Member Nominee – Stefano Catalani, Curator of Art, Craft and Design at Bellevue Art Museum http://www.bellevuearts.org/about_us/contact/artistic_director.html

Watch a charmingly informative video interview of him at:
<http://www.bing.com/videos/search?q=stefano+catalani>

And, he is featured in the Sunday, October 26, 2014 Seattle Times for “Putting BAM back on the map.” <http://www.bing.com/search?q=seattle%20times%20stefano%20catalani%20&pc=osp&ptag=A2D7CFEB0F35A4CD985F&form=CONMHP&conlogo=CT3210127>

NWDC Member Larry Metcalf nominated Stefano with this letter:

It is with pleasure and confidence that I nominate Stefano Catalani for Honorary Membership to NWDC. He is in the category of former Honorary Member LaMar Harrington and the present Honorary Members Lloyd Herman and Michael Monroe. All were and are leaders in the art and craft movement in the Northwest and the United States. Stefano has established his presence in their tradition.

He has brought back the exhibitions that were at one time the exclusive tradition of the Henry Gallery. He has carried this on through the exhibitions on clay and fiber and future exhibitions. His innovative selection of exhibitions has included Mary Lee Hu and David Chatt, members of NWDC. He was a major input to their catalogues. His curation of Patti Warashina’s exhibition was one of the highlights of the year.

His work with the local galleries and their Northwest artists shows his research into the local arena. He is not afraid of confronting social issues when curating an exhibition. He brings ideas and thought to the viewer. His variety of exhibitions from out of the region have inspired the artists of the Northwest and given much to the intellectual question of art vs. craft.

His collaborative input to NWDC through our support of lectures at the Museum has been innovative in the lecture series. Stefano’s input into the Northwest art scene has been outstanding. He has also reached a national status for the Bellevue Arts Museum and their mission. Stefano has fresh and innovative ideas, and in nominating him, I thought about how significant a collaboration between our two organizations could be.

Lifetime Member Nominee - none

2. Applicants were asked to provide the following:

- Professional-quality images that show a strong and consistent body of compelling and innovative work
- Work that is recent, meaning completed within the last THREE years
- A 100-word Artist Statement in which they share what they want us to know about their work
- Evidence in their brief Resumes of participation in 5 important and recent juried or invitational regional, national and/or international exhibitions
- Two Resume’ examples each of their educational background, teaching experience, commissions, awards, and publications.

Continues on next page.....

.....Continues from previous page

3. Notes to Jury by:

Here are some suggestions you may want to keep in mind as you prepare to jury this exciting group of new applicants:

- The work is the most important aspect. If you are unfamiliar with a particular medium, you can gain some context by contacting another member who works in that medium or the contact person listed on the ballot.
- Reading the text is also very important to see the applicant's background and current experience. We are looking for new members who are actively creating new and compelling work.
- NWDC also relies on its members to help broaden our representation in the fine crafts community, so also note applicants with connections to other organizations who could help strengthen those ties for both groups.
- Feeling overwhelmed? Join someone else to discuss your preferences, or have a party with fellow NWDC artists to look at the images together and discuss them. Then you can each vote on your own.

Most of all, we need to be discerning in order to uphold the high quality of work our group represents!

4. You may want to have a Sneak Preview of the Applicants' work:

Matthew Allison

Ceramics

www.mattallisonceramics.com

NWDC Members who know applicant:
Reid Ozaki, Loren Lukens, Paddy McNeely,
Gale Lurie, Gina Freuen, Ginny Conrow,
Paul Lewing, Ken Turner



Matt Allison, "White Form," 2011

Robert Beishline

Ceramics

(no web site)

NWDC Members who know applicant:
Reid Ozaki, Ken Turner



Rob Beishline, "Road Trip1," 2013

Barbara De Pirro

Mixed Media Installation & Sculpture

www.depirro.com

NWDC Members who know applicant:
Lanny Bergner, Danielle Bodine, Jill Clark,
Lynn DiNino, Lois Harbaugh,
Diane Kurzyna, Carol Milne, Patricia Resseque



Barbara DePirro, "Metamorphosis," 2014

Jenny Fillius

Re-purposed metals

www.Jennyfillius.com

NWDC Members who know applicant:
Jan Koutsky, Ted Turner, Diane Kurzyna,
Julia Haack, Kathy Ross, Nancy Megan Corwin



Jenny Fillius,
"Frankenstein Checks a Text," 2012

Continues on next page

.....Continues from previous page

Diane Gale

Ceramics

www.clayfires.com

NWDC Member who knows applicant:
Inge Norgaard



Diane Gale,
"Woodfired Skull,"
2013

Marguerite Goff

Clay

(no web site)

NWDC Member who knows applicant:
Patricia Resseguie



Marguerite Goff,
"Salmon Spirit,"
2008

Betty Hayzlett

Fiber and mixed media

www.bettyhayzlett.com

NWDC Member who knows applicant:
John Killmaster



Betty Hayzlett, "Landscape of
the Heart,"
2012

Shari Kaufman

Ceramic Wall Sculpture

www.sharikaufman.com

NWDC Member who knows applicant:
Lin Holley, Mark Ditzler, Jen Mills



Shari Kaufman, "Lilly Pads," 2012

Katherine Lewis

Willow basketry

www.dunbargardens.com

NWDC Member who knows applicant:
Dorothy McGuinness, Lanny Bergner, Kathleen
Faulkner, Lin McJunkin, Danielle Bodine, Leon
Russell



Katherine Lewis,
"Willow Knot Purse,"
2012

Kirk McLean

Stone, mixed media

(no web site)

NWDC Member who knows applicant:
Patricia Ressig,



Kirk McLean, "Slowtime," 2010

continues on next page ...

.....Continues from previous page

Nia Michaels

Tin assemblage

www.niamichaels.com

NWDC Member who knows applicant:

None



Nia Michaels,
"The Voyage," 2014

Kathleen Prost

Fiber

www.kathleenprobst.com

NWDC Member who knows applicant:

Ann Johnston? (Quilt Nat'l juror)



Kathleen Probst, "Alinea #1,"
2013

Lisa Flowers Ross

Fabric

www.LisaFlowersRoss.net

NWDC Member who knows applicant:

John Killmaster



Lisa Flowers Ross, "NE 10.3,"
2013

Deborah Schwartzkopf

Porcelain

www.debspottery.com

NWDC Member who knows applicant:

None



Deb Schwartzkopf, "Oil
Poured," 2013

Terri Shinn

Mixed media

www.terrishinn.com

NWDC Member who knows applicant:

Dona Anderson, Anita Luvera Mayer



Terri Shinn,
"Doorways of Decisions,"
2013

Terry Siebert

Ceramics

www.terrysiebert.com

NWDC Member who knows applicant:

Carol Gouthro, Lois Harbaugh, Paul Lewing,
Ginny Conrow, Loren Lukens, Rosette Gault,
Larry Halvorsen.



Terry Siebert, "Thimble & Salmon
Berries Albarello side 2," 2012

Dick Weiss

Classic stained glass

www.dickweissglass.com

NWDC Member who knows applicant:

Larry Metcalf, Lloyd Herman, Lynn DiNino,
Lois Harbaugh and dozens of others



Dick Weiss, "RazzleDazzle," 2012

“Stitching Us All Together” by Carol Milne
Reprinted from “Center for Knit and Crochet” Blog

Knitting is a meditative process. It slows me down and draws my attention to my hands: to creating something out of nothing, watching it grow. In a world of instant gratification, I like the slow repetitive process of making and anticipating a finished product. (Although, truth be told, the process itself often is more rewarding than any finished object.) The act of looping and interlocking individual stitches – making a solid object that is permeable, and yet constructed of many loops – makes connections where none existed before. My mind wanders to how we, in communities, are each small links in a part of the whole. All interconnected, interdependent, and in motion.



Knitting in glass (as I do) heightens this metaphor for me. As we face threats such as global warming, our world is interconnected and interdependent but also fragile. In glass, individual strands are weak and brittle on their own, but deceptively strong when bound together. You can crack or break single threads without the whole structure falling apart. And even when the structure is broken, pieces remain bound together. The connections are what bring strength and integrity to the whole and what keeps it intact. The connections are what will save us.

So knitting has made me think more deeply about the importance of community.

I joined Northwest Designer Craftsmen (NWDC <http://www.nwdc-online.org/>) in 2007. It is a juried group of artists and educators who work with their hands, and make and appreciate handmade objects. As our world becomes more and more technology based, I wanted to become more connected to people who dedicate their lives to making handmade objects. It's hard to take things for granted when you know what it takes to make them.

This year, NWDC celebrates its 60 anniversary with a show at the Whatcom museum in Bellingham, Washington. Reaching Beyond: The Northwest Designer Craftsmen at 60, opens September 14 and runs through January 4, 2015.

This show, like the organization it represents, is an eclectic collection of objects. What they all have in common is their dedicated attention to detail. The materials used include wood, clay, glass, fiber, metal and mixed media. The objects range from jewelry to sculpture to wall pieces. The work is everything from utilitarian to fine art. And really, when you see these objects, it's hard to argue that there is a distinction between utilitarian and fine art.

The two pieces I have in this show both involve knitting. Strike a Balance, (13 x 21 x 9 in), is a large piece of glass knitting (in single seed stitch) that reminds us that life is precarious and beautiful and fascinating all at once. The knitting stands upright with the knitting needle jauntily cantilevered and supported by the knitting. It's striking a pose and balanced at the same time.

Handmade, (16.5 x 9 x 9 in), is a pair of hands knitting themselves. The idea makes me laugh. It's funny to think of “knitting yourself”. But like much of my work it's a joke on the surface, with depth underneath. Having lost several key mentors in my life, this piece is also a meditation on what it means to become your own mentor.

Knitting is how I process life and how I formulate my direction for the future. The hand knows much that the mind can only guess.

Carol Milne is a sculptor living in Seattle, Washington. She works primarily in cast glass, much of which is also knitted.

www.carolmilne.com

“Northwest Designer Craftsmen at Port Townsend”
Northwind Arts Center, Port Townsend, WA
April 3 - 27, 2015

Next spring, the Northwind Arts Center will host a show featuring the artists of Northwest Designer Craftsmen. It is the perfect opportunity for you to showcase your artwork in the tourist spotlight that is Port Townsend, a unique travel destination that was recently voted “one of the coolest small towns in America.”

The arts center was founded in 2001 by a group of Port Townsend artists who sought to improve representation and support for the arts in the region, with the goal of connecting a wider diversity of art and artists with the community. It was awarded 501(c)(3) status in 2002.

A capital campaign is now underway to purchase a Port Townsend landmark, the 1885 Waterman & Katz building, and make it their new home. We hope to have the NWDC show at this new, exciting location right in the center of downtown Port Townsend.

The 1885 Waterman & Katz building

Location (current):

Northwind Arts Center
2409 Jefferson Street
Port Townsend, WA 98368
360-379-1086
email: info@northwindarts.org
Website: <http://northwindarts.org>

Gallery Hours: Noon – 5 pm Thursday – Monday

Media: Open to All 2D and 3D

Show: This show will not be juried, and it is an open show with no theme.

Entry Requirements:

- Art Work. Submit up to 3 pieces; submissions should be images of the actual pieces.
- Your Application. Your entry should contain the following:

Images: Provide 1 or 2 images of each piece. They must be jpeg images, and 1024 pixels on the long side. Label each image with your last name - and the name of the piece. Example: Stanton-Repoman Never Sleeps.jpg.

Supporting Information: In a separate MS-Word, or equivalent, Continues on next page.....



.....Continues from previous page....

Supporting Information: In a separate MS-Word, or equivalent, document, provide the following for each piece: Name, dimensions (h-w-d) in inches, year made, materials, photo credit, and display method (Wall Mount, Pedestal Mount) and security needs.

Artist Statement and CV: Provide an artist statement, and a CV (2-pages maximum) as separate documents. They should also be MS-Word or equivalent. No hardcopies or PDFs please.

Entries Due March 4, 2015

Applications must be submitted by email to galeluriepottery@comcast.net, or on a single CD by mail to:

NWDC Exhibition Committee
c/o Gale Lurie
3526 NE 92nd St.
Seattle, WA 98115
(206) 524-7321

Sales: The gallery commission is 40%.

Insurance: Insurance coverage is not provided by the gallery for artwork in the gallery's possession.

Delivery of Artwork: Your artwork must be delivered or shipped to the gallery by Tuesday, March 31, 2015. You may ship your work directly to the gallery, but remember that you also must include payment for return shipping; a check made out to Northwind Arts Center for the same amount as the shipping charge, or a prepaid shipping label from the appropriate delivery service (UPS, FedEx, etc). If your piece(s) is sold, the blank check or other document will be destroyed.

Finally, be sure to use adequate shipping materials to protect your work for the to, and from, shipments. Any special packing or display instructions should be included with your artwork. Please use the following shipping address:

Northwind Arts Center
ATTN: NWDC Exhibition
701 Water Street
Port Townsend, WA 98368
360-379-1086

Artist Reception/Opening of Show: April 4, 2015 during Port Townsend Art Walk, 5:30 to 8 pm.

Pickup Unsold Artwork (Optional): Tuesday, April 28, 2015.

Publicity: The Northwind Arts Center will include information on this show on all applicable publicity. The NWDC will publicize the show in selected local and national venues.

Contact: Judith Cunneen, RAGS Artists Chair, 253-756-9493 Phone, cunneenjudith@gmail.com

CALL FOR ENTRIES: 21st Annual Benefit: Juried Show and Sale of Wearable Art

Tacoma, Wash.—The YWCA RAGS Guild announces a call for entries for its 21st annual juried wearable art show and sale. The show will take place March 12-15, 2015, at Mercedes-Benz of Tacoma. Open to all artists working in all media of wearable art—garments, fashion accessories, and jewelry. Two entry types with nonrefundable fees:

- Gallery - competition of one-of-a-kind artist made pieces (\$15 per entry, up to three entries)
- Marketplace - boutique-style sale (\$35 entry fee)

All initial entries are juried by digital images. Accepted gallery entries are judged for award from actual works in late February 2015. Cash prizes to gallery winners in garments, accessories, jewelry, and best of show. As a benefit for domestic violence programs of the YWCA Pierce County, RAGS retains 33% of sales in Marketplace; 40% of sales in Gallery.

Deadline for submitting digital images is December 12, 2014. For prospectus and entry information, visit www.YWCApierce-county.org (click on RAGS), or send an SASE to Artist Coordinator, YWCA RAGS Guild, 405 Broadway, Tacoma, WA 98402. For more information, call the RAGS hotline at 253-272-4181, ext. 352.

NWDC dues for 2015 are coming up

You will receive an emailed invoice in November with a due date of January 1, 2015. We hope to have an easy way to pay online with a credit card. More details will follow.

the NWDC Angel Fund

As we reach out to potential new members by inviting them to apply online for this year's jurying by Oct 25, it's a good time for current members to help refresh our Angel Fund. We use this fund to offset the \$50 annual dues that pose a hardship to some applicants or current members. They can contact Lin McJunkin at lin@mcjunkinglass.com (360-941-6742) for information and the request will be kept confidential by the NWDC Board of Directors.

We will soon be able to take credit card payment for the Angel Fund through our website, but until then, you can send a check for any amount, make a full donation to sponsor someone you know is in need (anonymously if you like), or put a donation in the Angel Fund at any gathering. Please don't let the dues be a factor that prevents stellar artists from NWDC participation!

Loren Lukens, NWDC Treasurer
4208 SW 100th St
Seattle, WA 98146

Don't forget our online calendar and the new links to our exhibitions!
<http://www.nwdc-online.org/calendar/index.php?exhibitions/>

Take a look! The NWDC Website now has an exhibitions page with individual galleries for each show.

NWDC MEMBERS' NEWS



Lanny Bergner

<http://www.lannybergner.com>

“Design: Four Perspectives”

Eileen Sutton - Graceann Warn - Gary Magakis – Lanny Bergner

October 3, 2014 – November 29, 2014

<http://snyderman-works.com/exhibitions/four-fields-in-design>

Snyderman Works Galleries, Philadelphia, PA

Image:

Onion-top Vessel, 2014

Stainless steel mesh, wire, silicone, 26 x 13 x 13 in

(Photo: KP: Studios)

Denise Snyder's work at our 60th Whatcom Museum show was written up in the Bellingham Herald:

<http://www.bellinghamherald.com/2014/09/11/3810937/bellingham-artist-denise-snyder.html?sp=/99/600/662/&ihp=0>.

Carol Milne will have work under \$500 at the Community Artist's Program (CAP), third Thursday event, on November 20th from 5-8pm. The CAP showroom is located at in the Plaza Building of the Seattle Design Center.

5701 6th Ave South
Suite P274
Seattle, WA 98108



“Yarn Cozies” by Carol Milne

Carol Milne will be the Friday night speaker at the Madrona FiberArts Retreat in 2015. The event takes place February 12-16th at the Hotel Murano in Tacoma. <http://madronafiberarts.com/> Carol's talk takes place on February 13th at 7:30. It is free and open to the public (although you might have to register in advance).

NWDC MEMBERS' NEWS

MUSEO Holiday Gift Show

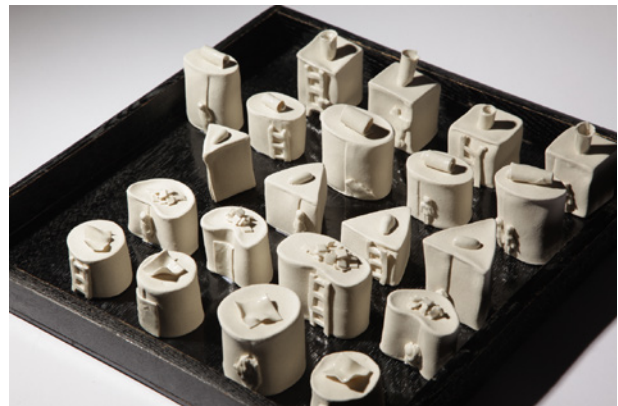
NWDC members Danielle Bodine, Jill Norfors Clark, Larry Halvorsen, Brian O'Neill, and Inge Roberts will be exhibiting their art work along with Tony Turpin and other artists in the MUSEO Holiday Gift Show.

Please join the artists for the opening reception
Saturday, November 1, 5-7pm.
Show runs: November 1- December 28, 2014

MUSEO
215 First Street/P. O. Box 548
Langley, WA 98260
360.221.7737
<http://www.museo.cc>

IngeRoberts' "Petits fours glacés," porcelain, cone 10, hand built, partly clear glazed

Bodine image:
"Josey and Leo - Family Series"
9-7"H X 1 1/2"D
Waxed linen, bone and glass beads, wire
Photo: Michael Stadler



Dona and Bob Anderson have moved. Their new address is:
720 Queen Anne Ave N, #604
Seattle, WA 98109
Visitors are welcome!



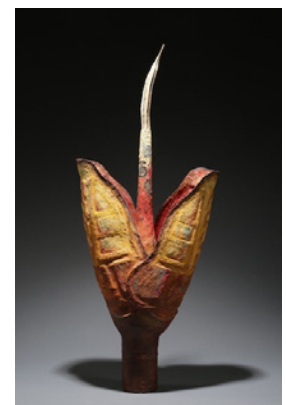
"Alien Fruit Basket"
31"LX10"HX9"W, Random weave vessel – collaged with bamboo paper. Vessel is filled with objects made by casting paper on funnels, removed and reformed, painted, dyed, collaged and embellished with a variety of objects.
Photo credits: Michael Stadler

NWDC member Danielle Bodine will be exhibiting her mixed media sculptures along with Portland artist Jennifer Kapnek in a two-person show at the Vashon Allied Arts. Join the artists at the opening reception Friday, November 7, 6-9 pm.

Show open November 7-26, 2014
Gallery hours: M-F 10-6, Sat. 12-5

Vashon Allied Arts
19704 Vashon Hwy.
Vashon Island, WA 98070
206-463-5131

<http://vashonalliedarts.org/events/gallery-page/>



"Artifact Hybrid Pod"
29"H X 12"W X 5"D
Mulberry papers cast on hockey leg protector and funnel, removed and reformed, painted, dyed, and stamped, pod.

NWDC MEMBERS' NEWS

“Kathleen Skeels New Work,” an exhibition on ceramic sculpture drawing and painting by Kathleen Skeels.

Exhibit information: Located at the Seward Park Clay Gallery, Seattle Design Center, Suite 182, 5701 Sixth Avenue South, Seattle WA 98108.

The gallery is open daily Monday through Friday, 9am-5pm and evenings 5pm -9pm on each third Thursday of the month.

The exhibition runs from Oct. 16th through Dec. 19th.

The artist will be present to greet visitors on October 16th, November 20th and December 18th for third Thursday festivities from 5pm-9pm.

Image at right is: “Portrait of a Sad Angry Old Man,” Porcelain, Photo credit Kathleen Skeels

Contact Kathleen Skeels, 206-310-3276
Website KathleenSkeels.com and sewardparkart.org



A note to NWDC members who weren't juried into our 60th Anniversary show at the Whatcom Museum: sometimes a picture by itself can intrigue a potential collector. Annette Tamm's piece (image at left), “Approaching Storm,” was sought after by a gentleman who, not finding it in the show, was assisted by a docent, went to Annette's home and bought it! Kudos to everyone who made our catalogue the wonderful work of art that it is!

NWDC MEMBERS' NEWS

Dorothy McGuinness is participating in the World of Threads Festival in Oakville, Ontario, Canada. She will be showing 5 pieces in the Corridor Galleries at the Queen Elizabeth Park Community and Cultural Centre, from November 1-30, 2014. http://www.worldofthreadsfestival.com/exhibitions_menu.html

IMAGE AT RIGHT: Title: "Icosahedron" Materials: watercolor paper, acrylic paint, waxed linen thread Size: 10 x 10 x 10"



Dorothy McGuinness is a 2015 Niche Award finalist in 2 categories: Fiber/Decorative and Basketry. Winners will be announced in January at the "American Made Show" in Washington DC. <http://www.nicheawards.com/>

IMAGE AT RIGHT: Title: "Satellite" Materials: watercolor paper, acrylic paint, waxed linen thread Size: 15 x 12 x 12"



IMAGE AT RIGHT: Title: "Lift Off V" Materials: watercolor paper, acrylic paint, waxed linen thread Size: 13 x 8 x 12"



Dorothy McGuinness will be in the book TextileArt around the world, from Textile-link. It will be available at the end of October. <http://www.textile-link.com/>

IMAGE AT RIGHT: Title: "Mobius 2" Materials: watercolor paper, acrylic paint, waxed linen thread Size: 13 x 13 x 6"



How to submit information to the NWDC newsletter

The deadline is the 15th of the month for the next month's newsletter. What is appropriate to submit? Anything in your professional life you would like to share with NWDC members: exhibits, awards, classes, art or studio sales, call for entries, etc. Be sure to include all the information: who, what, when, where & why.

How should text be formatted? Please send your information in an attached "Word" document, or in the body of an e-mail. The newsletter editor will copy / paste. Please, do NOT send your text in PDF files or jpeg copies of gallery postcards! The text in jpegs and PDFs cannot be copied and pasted.

What about Images? We want images! They need to be in jpeg format, 72 dpi, about 400 pixels on the longest side. Please include name, title, medium, dimensions, etc. Website addresses are great too.

The deadline is the 15th of the month. Send to Jan Koutsky: jankoutsky@comcast.net

Please put "NWDC Newsletter" in the subject line.

President - Lois Harbaugh - Lois.harbaugh@gmail.com 425-454-0098

Vice President - Joan Hammond - joan@haysys.com 425-391- 5045

Secretary - Patricia Ressaguie - fibergal2@me.com

Treasurers - Loren Lukens - loren.d.lukens@gmail.com 206-935-6740
Katherine Holznecht - khartiste@hotmail.com 425-481-7788

Archivist - Gretchen Echols - gfechols@comcast.net 206-781-5041

Education - Lin Holley - lin@palmstogether.net 206-322-7593

Education Support - Steph Mader steph@toltriverstudios.co

Layne Goldsmith is going to be Museum Liaison starting in January '15

Education Outreach - Eva Funderburgh - Bellevue Arts Museum lecture and workshop series

Exhibitions - Ron Pascho rpjh1@frontier.com 425-488-3404 / Starting in January - Gale Lurie

Exhibition Support - **VACANT**

Hospitality - **VACANT**

Hospitality For the large parties: Crista Matteson cristamatteson@gmail.com

Membership - Lin McJunkin lin@mcjunkinglass.com 360-941-6742

E-Mail Blasts - Annette Tamm a.tamm@frontier.com 360-299-0323

Roster Manager - Delores Taylor delores@artglassconcepts.com 425-788-0817

Newsletter - Jan Koutsky - jankoutsky@comcast.net 206-935-2306

Publicity - **VACANT**

Roster / Data Base - Delores Taylor - delores@artglassconcepts.com 425-788-0817

Social Media - CJ Hurley - cj@cjhurley.com 503-234-4167

Web Liaison - Trudee Hill - trudee@trudeehill.com 310-908-6675

Image Bank - Lanny Bergner - lbergner@wavecable.com 360-229-0514

NWDC
VOLUNTEERS

Don't forget to say
"thank you" to these
people who make
NWDC work for you.