

October 2014



Northwest Designer Craftsmen

www.nwdc-online.org

Facebook: <https://www.facebook.com/pages/Northwest-Designer-Craftsmen-NWDC/355877767779930?sk=wall>

NWDC online calendar: <http://www.nwdc-online.org/calendar/>

Members' Only Site: <https://sites.google.com/site/nwdesignercraftsmen>



Meetings & Speakers

Phinney Neighborhood Center Program: 2nd Wed. of the month
Board meetings 5:30-7 (open to everyone) Speaker 7-8 pm / Social Time 8-9 pm

Oct. 8 Katherine Holz knecht

Nov. 12 Larry Halvorsen



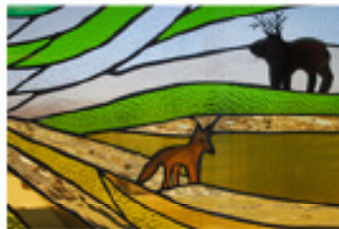
Northwest Designer Craftsmen

Lectures Series presents

Katherine Holz knecht



Katherine Holz knecht will present visuals and speak about her recent commission for the WA State Art in Public Places program. She will talk about the selection process, design, fabrication, and installation of four large stained glass windows for an elementary school in Moses Lake, Washington.



Wednesday, October 8th, 2014, 7pm to 8pm
Phinney Ridge Neighborhood Center, Lower Brick Building
6532 Phinney Avenue North, Seattle, Washington
Free and Open to the Public



Members with a photograph in the 60th Anniversary Catalog are eligible to receive a free copy. If you have not already picked up yours and will not be able to pick one up at an NWDC meeting this fall, please request that it be mailed to you. Priority Mail costs \$5.60 and takes two days, mostly.

Additional copies are for sale to the entire membership for \$25 plus tax and mailing (if applicable).

Send a check made out to NWDC to:

Loren Lukens

NWDC Treasurer

4208 SW 100th St

Seattle, WA 98146

206-935-6740

Mailed free catalog: \$5.60

Mailed purchased catalog: \$33.51

President's Letter

The NWDC show at Whatcom is magical. Transcendent. Mysterious. Our pieces look wonderful.

With an elegant exhibition design and inspired lighting, the Metcalf / Killgore duo and the talented Whatcom staff (Scott Wallin & David Miller) have transformed a hangar-like space into a path of treasures (our pieces.) The lighting creates intimacy: the space feels dimly lit, yet pieces glow with presence. My husband voiced what I thought: the space had a sacred quality.

I need to go back. I could hardly take it all in -- other than to say that it was amazing. Guests seemed exhilarated and awed. We perceived our pieces anew.

With our Summer Social, our 60th catalog, and now our Whatcom 60th exhibition members-only preview, we have continued the NWDC tradition of doing Grand Things.

I give credit to Megan Corwin's presidency and board for committing to celebrate the 60th. It is daring to make big promises, knowing how daunting it is to fulfill them; and yet it is so worth the risk and effort! NWDC identifies itself by its big endeavors.

Our show will be up for almost 4 more months. As of this writing, there are a few glitches to fix, more publicity to do, more social media for everyone to generate. There's ample time to bring friends and family back to the exhibit. Plan some events with your loved ones around this show. It has taken so much work and it is so miraculously good.

There's a schedule of events you may want to attend: a lecture by Lloyd Herman, a walk-through with Larry Metcalf, an event with multiple NWDC artists, and a workshop with Judy Zugish. Details, including docent tour information, can be found on the Whatcom calendar : <http://www.whatcommuseum.org/events>

Brown Bag: Whatcom Artists Studio Tour - September 18, 12:30 PM

Lloyd Herman: Craft Into Art - October 5, 2 PM, Old City Hall, 121 Prospect

Larry Metcalf on Northwest Designer Craftsmen - October 9, 10 AM, Lightcatcher building

Teacher Open House + AHA!: The Art & Science of Craft - Oct. 9, 3-8 PM (Open to the public), Lightcatcher bldg.

Brown Bag: Artists' Tour of Reaching Beyond - November 6, 12:30 PM, Lightcatcher

AHA! After Hours Art: Openwork Basketry Techniques - November 6, 5:30-7:30 PM - Judy Zugish gives a hands-on workshop

-Lois Harbaugh

Leo Adams will be having a show at Whatcom while NWDC's Reaching Beyond show is there.

Leo's show will have a Whatcom Museum Members-only preview on Saturday, Nov 1, 5-7 PM.

The Adams show opens to the public on Nov 2 and Leo will speak at 2 PM.

The Leo Adams show runs from Nov 2- February 22.



CECILIA BLOMBERG - NWDC September Presentation: "Creation and Recreation"
Reviewed by Julia Rapinoe

Cecilia Blomberg is a tapestry artist who grew up in northern Sweden and received her MFA at the National College of Art, Craft and Design in Stockholm in 1976. She came to the United States in 1977 and eventually settled in Gig Harbor where she now lives and has her studio. She has been in regional, national and international shows and worked on commissions throughout her career.

She began her talk by defining tapestry as a hand-woven, weft-faced construction with discontinuous wefts over warp threads which results in the weaver making the cloth and the image simultaneously. She briefly went over technical terms and described how a tapestry is made taking into account the size and spacing of the warps as well as the wefts to determine how detailed an image will be and how fast the weaving will go.

Her fascinating talk included her time at Stirling Castle in Scotland, her current commission for the Air Force Academy Catholic Chapel in Colorado, her other commissions through the Washington State Arts Commission, and her own personal work.

At Stirling Castle she was one of a small group of weavers who, over a space of 12 years, worked on the Unicorn Tapestry Project. Cecilia was there for 2 years and wove on the 6th tapestry in the set where the unicorn is killed and brought to the castle. This was a commission for the purpose of having a group of tapestries hang in the renovated castle that would represent the type of tapestries that would have hung there in the 1500's. She worked daily beside 2 other weavers.

Next she gave us a "tour" of the rooms, gardens and walks so that we could get a feel of being there from the point of view of a weaver re-creating the Hunt for the Unicorn Tapestries that are now hanging in the Queen's lodging at the castle. She told the story of how experts researched the originals at the Cloisters in NY so that the commissioned pieces for the castle would be similar, although 10% smaller to accommodate the space. The weavers were able to work with life-size reproductions of the originals and hand-dyed yarns to accomplish the re-creation and make them as close to the originals as possible. She had fun with some of the faces she wove, naming one of them after her son Jonas. Weaving was done in a setting that allowed visitors to come through and witness the process. All of tapestries but the last one are now finished and hanging in the Queen's lodging.

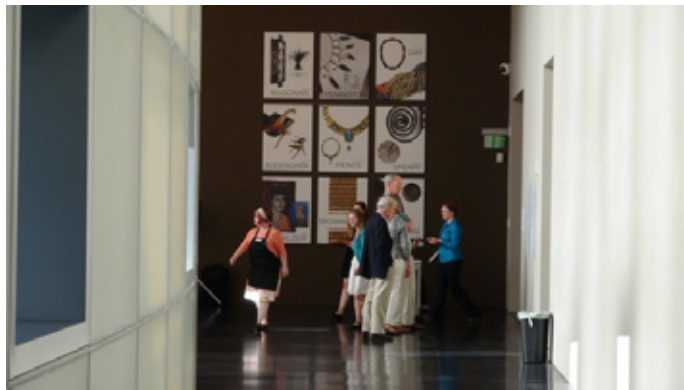
She is currently working on a series of tapestries for the Air Force Academy Chapel. It involves creating 8 tapestries of the saints and 5 smaller for the ambo (pulpit) of the liturgical seasons. She worked with a committee at the Academy who chose the saints. She walked us through her design and weaving process which included research, sketching and proposals for each tapestry. The first three finished were St. Ignatius of Loyola, Michael the Archangel and Joan of Arc and now hang in the Chapel.

For the rest of the talk Cecilia showed us images of commissioned pieces she did through the Arts Commission. These included some beautiful pieces done for several elementary schools and Grays Harbor College in Aberdeen, WA. She ended with images of her own personal work. We then had some time to look at items she brought – tapestries, drawings for the Air Force commission, catalogs of the castle, weaving tools and books she is featured in. Thank you, Cecilia, for sharing your story with us.

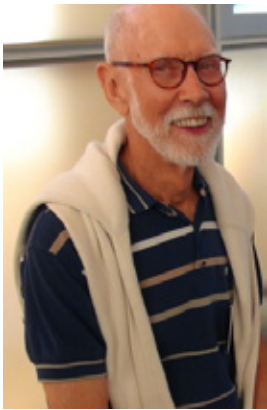
60th Exhibition Opening Reception at the Lightcatcher Building



Lynn Di Nino speaking about Larry Metcalf's Lifetime Achievement Award



Interior of the Lightcatcher Building & entrance to our exhibit



Lloyd Herman



Ron Ho



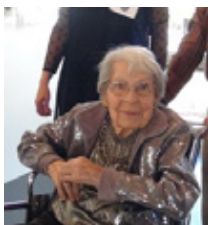
Ron Pascho speaking to our group about the 60th Exhibition



Marjorie & Russell Day



Larry Metcalf's sister, Lynn Di Nino and Dick Weiss



Marjorie Day



Larry Metcalf, Liza Halvorsen & Lois Harbaugh



Russell Day & Ruth Allen



Cal Killgore, Lois Harbaugh & Larry Metcalf in front of the founders' images



Ben Mitchell & Patricia Leach



Hellyn Pawula



Julia Haack & Jen Mills



Julie Conway, Crista Matteson, Eva Funderburgh



Brian O'Neill



Jan Koutsky, Ken Turner, and Judy Zugish



Hellyn Pawula & Nadine Kariya



Laurie Hall, Stewart Wong, Ron Ho & Thom Harrington



Mark Ditzler



Nadine Kuriya



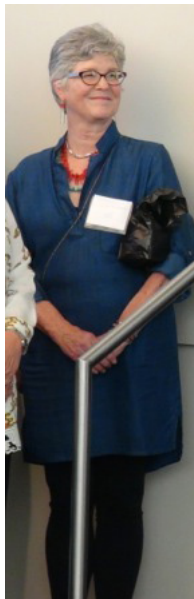
Nanz Aalund & Nancy Hewitt



Cameron Anne
Mason



Barbara Matilsky



Liza Halvorsen



Cecilia Blomberg &
Katherine Holzknicht



Teri Jo Summer



Seth Rolland



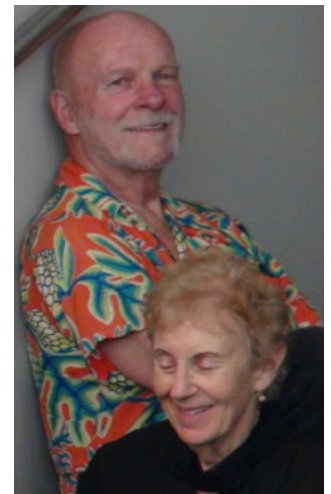
Barbara Walker



Denise Snyder



Julia Lowther & husband



Lars Husby & Ginny Conrow

New Board Members Coming in January

Please say 'thank you' to these NWDC members for volunteering their time to our organization. Their terms start in January:

Gale Lurie will be Exhibitions Chair

Patricia Ressaguie will be our next secretary

Layne Goldsmith is going to be Museum Liaison.

Crista Matteson is joining the Hospitality committee to plan our large events.

Summary of the Sept. Board Meeting

The NWDC board met on 9/10/14 before the general meeting and discussed a lot of last minute details about the 60th Anniversary exhibit opening. The expenses for the exhibit have come in under the estimate. Joan Hammond discussed her findings about a new projector, and issues with the one we now have. The board approved the purchase of a dedicated laptop and software to be used for accounting. Gale Lurie talked about upcoming exhibit possibilities for 2015, and the next exhibit at North Wind Gallery in Port Townsend.

NWDC Holiday Party time is coming!

Do you have a house/studio or alternative venue where you would be willing to let the NWDC group gather for our annual party in December?

We anticipate approximately 50-70 people attending our potluck. All we ask of you is to provide the space and we'll organize the rest! It's as easy as that and a whole lot of fun, too.

Contact Crista Matteson: cristamatteson@gmail.com

NWDC Web Site Update

Calling all NWDC members to submit images for the website. You can submit up to two: one for the homepage slideshow and one for the members' gallery of your choice. If you would like to be included in the members' gallery, we will also need your artist statement (125 words or less), the gallery you would like to be included in, and your personal website address (optional). Images may be in .jpg or .tif format, at least 72dpi, and a minimum of 400 pixels wide/tall. These are minimum requirements. Feel free to send larger images, which will be formatted accordingly. Please email your files directly to the Website Liaison, Trudee Hill: trudee@trudeehill.com Questions regarding digital image formatting may be sent to Trudee as well.

New Newsletter Editor Needed

Jan Koutsky will retire from being the newsletter editor at the end of this year (the December issue will be her final issue) after nearly four years of service. This position is open and available to someone who would like to help our organization. This is an important task. The newsletter is the 'face' of NWDC.

A typical month's newsletter cycle goes like this:

- Newsletter is distributed to members on the first of the month - sent out by our 'email blast' volunteer (Thank you Annette Tamm)
- When members receive it, they are reminded to submit for the next issue, so the newsletter editor will typically receive text (ready to copy / paste) and images for the next issue during the first few days of the month - typically about 4 or 5 submissions.
- The newsletter editor does not write the newsletter - they simply copy / paste text & images into a page layout program ("Word" will work - as well as others.)
- After that initial 'surge' from members, there is about a week of inactivity.
- As the 15th of the month arrives (the deadline), more emails arrive. The newsletter editor copies / pastes the new information into the newsletter.
- We currently have three members who volunteer to proofread the newsletter (Thank you Polly Adams Sutton, Natalie Olsen and Ginny Conrow.) The proofreaders have asked for a week's turn-around time, so the editor finalizes the page layout and sends copies to those three volunteers on the 21st of the month. Again - there is about a week of no activity for the newsletter editor.
- Each proofreader sends corrections to the editor by the 28th of the month.
- The editor makes changes on the 29th or 30th (the changes go quickly) and sends the final copy to the 'email blast' volunteer (Thank you, again, Annette Tamm).
- Almost finished... Did you know a copy of our newsletter is posted on our public web site, sent to the UW Archives, and is printed at the American Craft Council for their library? Those copies are redacted. All personal information (email addresses, phone numbers, mailing addresses, party locations) are whited out. When the redacted version is sent, the editor is finished with the cycle for another month.

Being the newsletter editor is a great way to get to know other NWDC members. The busiest time is between the 15th of the month (when the last of the copy & images arrive) to the 21st (when it is sent to the proofreaders). Otherwise, this is not a busy job.

You can do this job in your pj's on your couch and on your own time frame. You will know everything that is going on with NWDC. You will be in communication with members as they submit. People will profusely thank you when they see you at parties. (Everyone has been so kind and appreciative.) You will be a hero.

If you would like any more information about what is involved, please contact Jan at: jankoutsky@comcast.net or at 206-935-2306.

The November & December issues will be Jan's last. She has enjoyed it. She just needs a break for a while, and will consider doing it again in the future. This is not a bad job, and it is a great way to serve NWDC.

the NWDC Angel Fund

As we reach out to potential new members by inviting them to apply online for this year's jurying by Oct 25, it's a good time for current members to help refresh our Angel Fund. We use this fund to offset the \$50 annual dues that pose a hardship to some applicants or current members. They can contact Lin McJunkin at lin@mcjunkinglass.com (360-941-6742) for information and the request will be kept confidential by the NWDC Board of Directors.

We will soon be able to take credit card payment for the Angel Fund through our website, but until then, you can send a check for any amount, make a full donation to sponsor someone you know is in need (anonymously if you like), or put a donation in the Angel Fund Angel at any gathering. Please don't let the dues be a factor that prevents stellar artists from NWDC participation!

Loren Lukens, NWDC Treasurer
4208 SW 100th St
Seattle, WA 98146

New Member Application Available - Deadline October 25

NWDC totally depends on the quality of our membership.

Now -- during the application season -- is the time when new members are created. The application is available at www.nwdc-online.org and due by email on Oct 25.

Ultimately, what our membership looks like is up to us.

We grow rich with diversity of talent, fresh energy, with networks of friendships.

Are there people who should have joined long ago and haven't? Invite them to apply.

And how about the up & comers? I would love to see young, committed talent flow into NWDC: artists who could belong for decades-to-come and really carry NWDC into the future. (Some of our members were ready for NWDC early on & have had the luxury of belonging to NWDC throughout a career. That's an experience I envy and would certainly wish for others. Is there a young Ramona Solberg in your field? Is there someone innovating, someone who's a magnet for others?)

Sometimes new members bring with them linkages to other groups or guilds.

NWDC is a great context in which to be an artist. NWDC offers connections to other artists, other craft fields, to arts organizations, to a craft legacy and to future opportunities. The benefits of belonging to NWDC are legion: recounted by our members on the green page of our new catalog (reprinted in this newsletter). Those statements are a good guide for talking to prospective applicants.

And this year we have the beautiful Whatcom show and a handsome catalog that show our tradition of doing grand things for over 60 years.

Please invite responsibly. Make sure the applicant knows they will be juried online by all members and will need 10 images of a cohesive body of recent work; that the photography needs to be of professional quality; that a resume of exhibitions is required. It's the savvy applicant who asks for help: a review of their images or materials. Give your best frank response. If someone is borderline-ready, it might be better if they wait till they're slam-dunk ready. I say that because it is painful to be voted on by a host of people & not make it.

Once your applicant is accepted, make sure they come to events so they will have a chance to love NWDC. -Lois Harbaugh

I am still in awe of the individual and collective talent of this group and I am honored to be part of this group.

— Ken Turner

This is my professional organization. I can belong to groups of like-minded individuals relating to my life and activities. But NWDC is the one that both looks on me as a professional craftsperson and unites me with other professional craftspeople.

— Jean Tudor

What is wonderful about NWDC is that you get to bridge disciplines and talk about form and composition, not just technique.

— Julia Lowther

Why I joined? I wanted to be able to meet and network with other artists in a larger area than my own small community . . . Now I know so many more excellent artists that I would not really have a chance to interact with otherwise.

— Denise Snyder

NWDC has been invaluable to me in connecting me with the long history of crafts in the Northwest, and giving me a place in this wonderful, embracing community of craft.

— Eva Funderburgh

NWDC MEMBERS SPEAK FOR THEMSELVES

What I find inspiring about NWDC is the level of craftsmanship and the quality of the work.

— Carol Gouthro

I joined for the community and to have the imprimatur of NWDC. With so many artists it can be hard to differentiate yourself in a few words. The NWDC membership means something to art professionals.

— Zia Gipson

I am invigorated by close, longtime friendships in NWDC, and the continuous exposure to artists of all ages in all media.

— Jill Nordfors Clark

I tell new recruits that I want the same experience for them: connection, interaction, encouragement.

— Lin McJunkin

This is a group of wonderful artists who inspire one another and share with one another.

— Joann Feher





friends of asian art association



Arts and Crafts in an Emerging Myanmar

Don't miss this fascinating program on the current arts of Myanmar (formerly Burma), which has had a rich tradition of arts and crafts, many centered around the Buddhist religion. The country's emergence from a dark period in its history, where its arts were largely hidden for decades under a harsh military regime, is currently undergoing a renaissance in its artistic traditions, fueled by a boom in tourism.

Sunday, October 12, 1-3 p.m.

The Burke Museum (U.W. Seattle Campus)

Free parking

Pre-registration:

FA3 members: \$10 ■ Non-members: \$15

On-Site:

FA3 members: \$15 ■ Non-members: \$20

To register, or for more information, go to: FriendsOfAsianArt@earthlink.net.

Speaker Barry Broman received a BA in Political Science and an MA in Southeast Asian Studies at the University of Washington. He was commissioned in the U.S. Marine Corps and served as an infantry officer in Vietnam and a liaison officer in Thailand. He joined the Foreign Service of the U.S. Department of State and, during his foreign postings, served in Cambodia, Thailand, France, Indonesia, and Burma. Broman has also worked as an Associated Press photographer in Thailand, Cambodia, and Vietnam. After retiring from government service, he began writing and creating photography books and articles, mainly on Asian subjects, and has produced eight documentary films.



Kalaga Textile Workshop



Puppet Theater



Foundry Worker

Don't forget our online calendar and the new links to our exhibitions!

<http://www.nwdc-online.org/calendar/index.php?/exhibitions/>

Take a look! The NWDC Website now has an exhibitions page with individual galleries for each show.

“Northwest Designer Craftsmen at Port Townsend”
Northwind Arts Center, Port Townsend, WA
April 3 - 27, 2015

Next spring, the Northwind Arts Center will host a show featuring the artists of Northwest Designer Craftsmen. It is the perfect opportunity for you to showcase your artwork in the tourist spotlight that is Port Townsend, a unique travel destination that was recently voted “one of the coolest small towns in America.”

The arts center was founded in 2001 by a group of Port Townsend artists who sought to improve representation and support for the arts in the region, with the goal of connecting a wider diversity of art and artists with the community. It was awarded 501(c)(3) status in 2002.

A capital campaign is now underway to purchase a Port Townsend landmark, the 1885 Waterman & Katz building, and make it their new home. We hope to have the NWDC show at this new, exciting location right in the center of downtown Port Townsend.

The 1885 Waterman & Katz building

Location (current):

Northwind Arts Center
2409 Jefferson Street
Port Townsend, WA 98368
360-379-1086
email: info@northwindarts.org
Website: <http://northwindarts.org>

Gallery Hours: Noon – 5 pm Thursday – Monday

Media: Open to All 2D and 3D

Show: This show will not be juried, and it is an open show with no theme.

Entry Requirements:

- Art Work. Submit up to 3 pieces; submissions should be images of the actual pieces.
- Your Application. Your entry should contain the following:

Images: Provide 1 or 2 images of each piece. They must be jpeg images, and 1024 pixels on the long side. Label each image with your last name - and the name of the piece. Example: Stanton-Repoman Never Sleeps.jpg.

Supporting Information: In a separate MS-Word, or equivalent, Continues on next page.....



.....Continues from previous page....

Supporting Information: In a separate MS-Word, or equivalent, document, provide the following for each piece: Name, dimensions (h-w-d) in inches, year made, materials, photo credit, and display method (Wall Mount, Pedestal Mount) and security needs.

Artist Statement and CV: Provide an artist statement, and a CV (2-pages maximum) as separate documents. They should also be MS-Word or equivalent. No hardcopies or PDFs please.

Entries Due March 4, 2014

Applications must be submitted by email to galeluriepottery@comcast.net, or on a single CD by mail to:

NWDC Exhibition Committee
c/o Gale Lurie
3526 NE 92nd St.
Seattle, WA 98115
(206) 524-7321

Sales: The gallery commission is 40%.

Insurance: Insurance coverage is not provided by the gallery for artwork in the gallery's possession.

Delivery of Artwork: Your artwork must be delivered or shipped to the gallery by Tuesday, March 31, 2015. You may ship your work directly to the gallery, but remember that you also must include payment for return shipping; a check made out to Northwind Arts Center for the same amount as the shipping charge, or a prepaid shipping label from the appropriate delivery service (UPS, FedEx, etc). If your piece(s) is sold, the blank check or other document will be destroyed.

Finally, be sure to use adequate shipping materials to protect your work for the to, and from, shipments. Any special packing or display instructions should be included with your artwork. Please use the following shipping address:

Northwind Arts Center
ATTN: NWDC Exhibition
701 Water Street
Port Townsend, WA 98368
360-379-1086

Artist Reception/Opening of Show: April 4, 2015 during Port Townsend Art Walk, 5:30 to 8 pm.

Pickup Unsold Artwork (Optional): Tuesday, April 28, 2015.

Publicity: The Northwind Arts Center will include information on this show on all applicable publicity. The NWDC will publicize the show in selected local and national venues.

Contact: Judith Cunneen, RAGS Artists Chair
253-756-9493 Phone
cunneenjudith@gmail.com

CALL FOR ENTRIES

21st Annual Benefit: Juried Show and Sale of Wearable Art

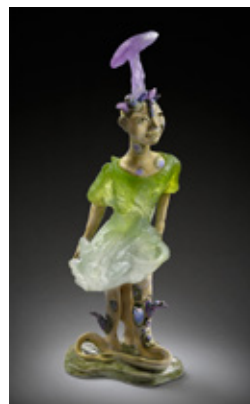
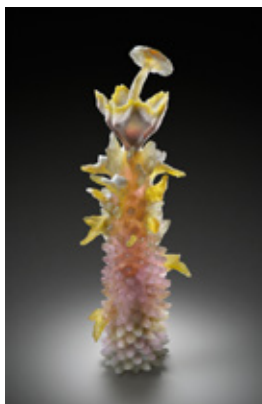
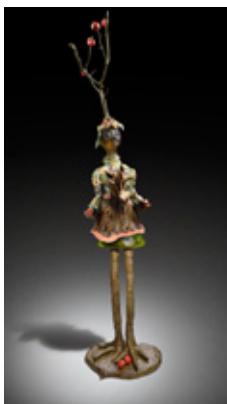
Tacoma, Wash.—The YWCA RAGS Guild announces a call for entries for its 21st annual juried wearable art show and sale. The show will take place March 12-15, 2015, at Mercedes-Benz of Tacoma. Open to all artists working in all media of wearable art—garments, fashion accessories, and jewelry. Two entry types with nonrefundable fees:

- Gallery - competition of one-of-a-kind artist made pieces (\$15 per entry, up to three entries)
- Marketplace - boutique-style sale (\$35 entry fee)

All initial entries are juried by digital images. Accepted gallery entries are judged for award from actual works in late February 2015. Cash prizes to gallery winners in garments, accessories, jewelry, and best of show. As a benefit for domestic violence programs of the YWCA Pierce County, RAGS retains 33% of sales in Marketplace; 40% of sales in Gallery.

Deadline for submitting digital images is December 12, 2014. For prospectus and entry information, visit www.YWCApierce-county.org (click on RAGS), or send an SASE to Artist Coordinator, YWCA RAGS Guild, 405 Broadway, Tacoma, WA 98402. For more information, call the RAGS hotline at 253-272-4181, ext. 352.

NWDC MEMBERS' NEWS



In June, Crista Matteson's piece "Pony Dress On Harvest Day" (above, left) won "Grand Prize" in the 19th Juried Art Show at the Schack Art Center, Everett.

In July she participated in the Kirkland Art Center's, KAC Artists Exhibition with her piece, "Unexpected Bloom." (Above, center)

And she is the featured artist in the show "Funny Bone, Humor in Art" (Above, right) that runs through mid-October at the University House in Seattle.

If ever there was an opportunity for the network of NWDC to help a member's business, this is it!

NWDC member **Catherine Grisez** is a finalist for a Martha Stewart American Made Award! One of the awards is chosen by YOU, the audience. Anyone can vote up to 6 times per day until October 13.

Here's the link: <http://www.marthastewart.com/americanmade/nominee/90456/style/catherine-grisez-jewelry>

Full disclosure: the link takes you right to Catherine's voting page, but before voting, you will have to sign in with Martha Stewart's site (give your email address, create a password, verify your e-mail address.) I found it momentarily irritating — but once you're through this initial work, **YOU CAN VOTE FOR CATHERINE! SIX TIMES EVERY DAY!**

I'm pasting this link on my desktop, so I can do this every day until Oct 13.

A personal aside: I first became aware of Catherine Grisez when I saw her installation at the BAM show "Making Mends," about healing and art. Catherine's theme was about wounds as jewelry. Her installation lifted craft into high concept art. I loved it. A few years later, when I called her to see what she was doing, she told me she was developing a production line. A girl's got to eat. Now this! Catherine keeps knocking it out of the park.

Catherine's work is lovely and we all know running a small business is tough. This kind of attention is rare. Let's show what NWDC support can do. Let's help Catherine win. She deserves it!

- Lois Harbaugh



Want to meet the artist and see what you're voting for in person?
Catherine is having an open studio/sample sale party to celebrate her status as a finalist.

Saturday, October 11th

2-6:00pm

Her studio is located in the South Park neighborhood:
1244 S Concord St.
Seattle, WA 98108

NWDC MEMBERS' NEWS

Lanny Bergner has a two-person exhibition coming up at Snyderman-Works Galleries, Philadelphia, PA
October 3 – November 22, 2014

<http://snyderman-works.com>

<http://www.lannybergner.com>

“Onion-top Vessel”
Stainless steel mesh, wire, 2014



The Arts Commission of Lake Oswego, Oregon, is showing Lin McJunkin's “Wy'east” (Mt. Hood) piece in their 2014-16 Gallery Without Walls Exhibition at the SW corner of B Ave and 1st St. The steel and fused glass piece (shown at right) is about melting glaciers, 7' x 3' x 1' tall.

www.artscouncillo.org

Lin McJunkin's piece entitled “WE R 2 YNG 4 THIS” honors very young women with breast cancer (shown below). The five, 6” high slumped glass torsos with gradually deteriorating shapes have text from the title fired into them. In a stainless steel stand with known carcinogens stenciled on the front and current treatment options on the back, the glass bodies will be featured in “Emergence 2014: International Artists to Watch” at Galerie Myrtis, Baltimore, MD, Sept. 15-Nov. 15, 2014. www.galeriemyrtis.net



NWDC MEMBERS' NEWS

Lois Harbaugh's piece "Artobiography" aka "Selfies on a Shelfie" is in the "Selfie" show at Columbia City Gallery. The show was juried by Sharon Arnold (founder/curator at LxWxH Gallery), Cable Griffith (Cornish College of the Arts), and Esther Luttikhuizen (4Culture). The show runs from September 24 - November 19.

"My Artobiography" AKA "Selfies on a Shelfie" is 4 pairs of cups arranged in a line on a shelf with a mirror. The text side of the triangular cups face the viewer; the image side is reflected in the mirror. Each pair of cups has one cup with text about my personal art/life; the other cup concerns an art historical event of the time: specifically, "this is what I looked like when..." some well-known artist is playing the "enfant terrible" role.

Why relate myself to the enfants terribles of art history? Is it because I was always "the good child," the intended dupe of an older brother? Is it because all artists swim in the context of art history and are changed by what other artists do? Is it because acts of the enfant terrible — be they misguided, enlightened, political, or just plain wrong — manage to to set off our trickster alert? We have to re-evaluate. We have to sharpen our edge.



"My Artobiography" AKA "Selfies on a shelfie" 48" long x 11.5" tall x 9.5" deep. shelf with mirror, 8 porcelain cups and saucers, each with text & an image



David French recently installed a new commissioned work for Skagit Valley College. His painted wood sculpture "Rise" is located near the front entrance of the new Charles Lewis Hall. The opening ceremony for the building is on September 18, 2014.

NWDC MEMBERS' NEWS

Dorothy McGuinness is participating in three group shows:

“Pulp Culture: Paper is the Medium,” at the Morris Museum, Morristown, NJ, September 21 – December 7, 2014. <http://www.morrismuseum.org/>

“Fiber,” at the Fitton Center for Creative Arts, Hamilton, Ohio, October 18 – December 5, 2014. <http://www.fittoncenter.org/>

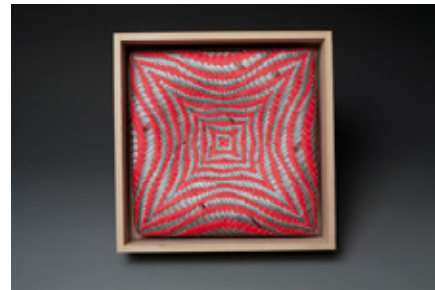
“Parallel Patterns – Significant Schemes, Seams & Symbols,” part of the North Olympic Fiber Arts Festival, at the Museum & Arts Center, Sequim, WA, October 3 – November 29, 2014. <http://www.fiberarts-festival.org/index.html>



“Svetlana”
Materials: watercolor paper, acrylic paint,
Size: 12 x 12 x 5.5”



“Tetrahedron 3,” Materials: watercolor paper, acrylic paint, Size: 13 x 13 x 13”



“Amazing,” Materials: watercolor paper, acrylic paint, wooden box, Size: 9 x 9 x 3”

Julia Rapinoe has 2 tapestries in the ART OF TEXTILES SHOW at the Arts of Kenmore Gallery at Kenmore City Hall. The show runs from September 19th to November 14th.

Polly Adams Sutton’s piece, “Beare,” is in “New Textiles/Exploring Textile Arts”. October-November 2014
Mobilia Gallery, Cambridge, MA



How to submit information to the NWDC newsletter

The deadline is the 15th of the month for the next month's newsletter. What is appropriate to submit? Anything in your professional life you would like to share with NWDC members: exhibits, awards, classes, art or studio sales, call for entries, etc. Be sure to include all the information: who, what, when, where & why.

How should text be formatted? Please send your information in an attached "Word" document, or in the body of an e-mail. The newsletter editor will copy / paste. Please, do NOT send your text in PDF files or jpeg copies of gallery postcards! The text in jpegs and PDFs cannot be copied and pasted.

What about Images? We want images! They need to be in jpeg format, 72 dpi, about 400 pixels on the longest side. Please include name, title, medium, dimensions, etc. Website addresses are great too.

The deadline is the 15th of the month. Send to Jan Koutsky: jankoutsky@comcast.net

Please put "NWDC Newsletter" in the subject line.

President - Lois Harbaugh - Lois.harbaugh@gmail.com 425-454-0098

Vice President - Joan Hammond - joan@haysys.com 425-391- 5045

Secretary - Patricia Ressaguie - fibergal2@me.com

Treasurers - Loren Lukens - loren.d.lukens@gmail.com 206-935-6740

Katherine Holznecht - khartiste@hotmail.com 425-481-7788

Archivist - Gretchen Echols - gfechols@comcast.net 206-781-5041

Education - Lin Holley - lin@palmstogether.net 206-322-7593

Education Support - Steph Mader steph@toltriverstudios.co

Layne Goldsmith is going to be Museum Liaison starting in January '15

Education Outreach - Eva Funderburgh - Bellevue Arts Museum lecture and workshop series

Exhibitions - Ron Pascho rpjh1@frontier.com 425-488-3404 / Starting in January ;15 - Gale Lurie

Exhibition Support - **VACANT**

Hospitality - **VACANT**

Hospitality For the large parties: Crista Matteson cristamatteson@gmail.com

Membership - Lin McJunkin lin@mcjunkinglass.com 360-941-6742

E-Mail Blasts - Annette Tamm a.tamm@frontier.com 360-299-0323

Roster Manager - Delores Taylor delores@artglassconcepts.com 425-788-0817

Newsletter - Jan Koutsky - jankoutsky@comcast.net 206-935-2306

Publicity - **VACANT**

Roster / Data Base - Delores Taylor - delores@artglassconcepts.com 425-788-0817

Social Media - CJ Hurley - cj@cjhurley.com 503-234-4167

Web Liaison - Trudee Hill - trudee@trudeehill.com 310-908-6675

Image Bank - Lanny Bergner - lbergner@wavecable.com 360-229-0514

NWDC
VOLUNTEERS

Don't forget to say
"thank you" to these
people who make
NWDC work for you.