



Northwest Designer Craftsmen

www.nwdc-online.org

October 2011



OCTOBER @



THE PHINNEY

Oct. 12

6-7 Board Meeting

7-9 pm **Ron Ho** : “Chinese Tribes in SW China”

Phinney Neighborhood Center Community Hall

6532 Phinney Ave. N. Seattle 98103

**Come to our Opening!!
See the show before it ends**

NWDC Show “Confluence”
September 7, 2011 to October 28, 2011
Chase Gallery
<http://www.spokanearts.org/chase.aspx>
808 W. Spokane Falls Blvd.
Spokane, WA 99201-3333
Phone: (509) 625-6050

Gallery hours:

Monday 8:00am-9:00pm, Tues-Friday 8am- 5pm

Saturday&Sunday- Closed

Opening of Show: Wednesday, September 7, 2011

Artist Reception:

Friday, October 7, 2011 5:00pm-9:00pm

De-installation:

Monday, October 31, 2011 8am- nished



NOVEMBER



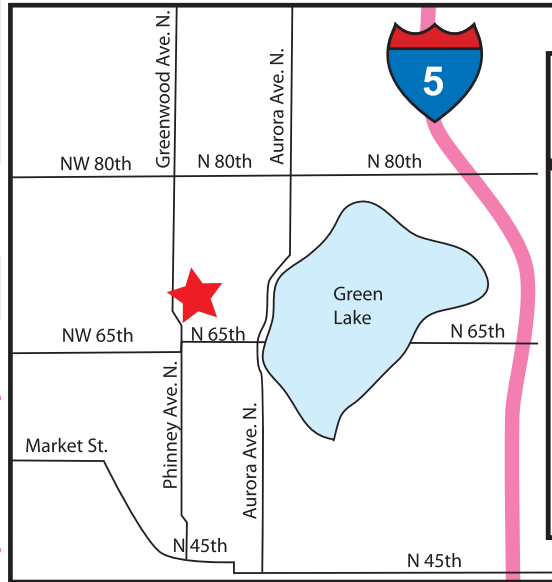
PHINNEY

Nov. 9

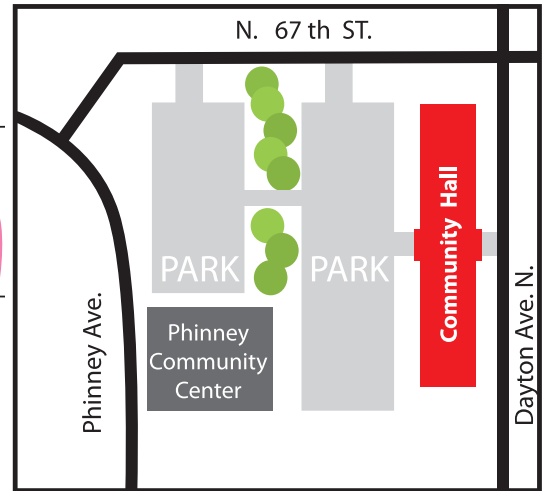
6-7 Board Meeting

7-9 pm **Lars Husby** “About Mexico: arts, crafts, ruins, and a couple of rituals.”

How to Find the Phinney?



Phinney Neighborhood Center
6532 Phinney Ave. N. Seattle 98103



Mark Your Calendars! Upcoming Programs at the Phinney and at the Bellevue Arts Museum

October 12, 2011
6-7 board meeting
7-9 pm **Ron Ho**
Phinney Neighborhood Center
Community Hall

November 9, 2011
6-7 board meeting
7-9 pm **Lars Husby**
Phinney Neighborhood Center
Community Hall

January 2012
Annual Members' Meeting

February 8, 2012
6-7 board meeting
7-9 pm **Image Bank**
Phinney Neighborhood Center
Community Hall

Sunday February 19th 2pm
NWDC lecture series at BAM
NCECA Panel Discussion

March 14, 2012
6-7 board meeting
7-9 pm **Cameron Anne Mason**
Phinney Neighborhood Center
Community Hall

April 11, 2012
6-7 board meeting
7-9 pm **Margaret Ford**
Phinney Neighborhood Center
Community Hall

Sunday April 15, 2012 2pm
NWDC lecture series at BAM
Patty Warashina

May 9, 2012
6-7 board meeting
7-9 pm (being finalized)
Phinney Neighborhood Center
Community Hall

June 13, 2012
6-7 board meeting
7-9 pm **Mary Ann Peters**
Phinney Neighborhood Center
Community Hall

Sunday June 24, 2012 2pm
NWDC lecture series at BAM
Lloyd Herman
The Evolution of Craft

NCECA
&
BAM

In 2012 the **National Council on Education for the Ceramic Arts** annual conference will be held in Seattle. Thousands of visitors will come to Seattle and the Pacific Northwest to see the best and brightest of contemporary ceramic work. Join Bellevue Arts Museum's own **Stefano Catalani**, UW Professor **Jamie Walker**, arts professional **Marge Levy**, and **Wally Bivins** Director of Pottery Northwest for a panel discussion and preview of the exhibitions and artists involved in this national event Sunday February 19th 2pm at BAM.

President's Letter

Wednesday, September 7th, was our first lecture in our monthly series about NWDC artists' travels. Lynn Di Nino, Elinor Maroney and Marsha Conn (the trip organizer) shared images and stories from their experiences of working for a month with the Batwa Pigmyes of Uganda in January, 2011. The Batwa people are amazingly talented and it was impressive to see, for instance, what they could do with a piece of cloth – from beautiful rock and fabric necklaces to the saving of the “Singer” sewing machine in want of a belt. They twisted the cloth, sewed it together and the machine was running. The artists volunteering their time and imaginations, introduced materials and ideas for creating new sellable art/craft items and revamped the gallery shop selling the Batwa wares - improving the desirability and exposure of the craft forms on display. All three artists were obviously moved by the spirit of the Batwa people and saddened by the poverty of many. Marsha and the nine artists who went with her were on a mission to improve the lives of those displaced by the modern world by using art, our common language. Thank you Lynn, Marsha and Elinor!

I hope you can all join us this month when Ron Ho will show slides of the arts and crafts of the Chinese Minority tribes of Guizhou and Yunnan Province. Don't miss his examples of costumes, textiles and jewelry from these regions.

We are gearing up for the first on-line new member jurying. Be sure to review the applicants and vote.

We had our first 50-minute board meeting! Things are running very smoothly now and I encourage all of you to consider joining us. Whether or not you are on the board, you are invited to attend board meetings. It's a great way to see how the organization runs.

Megan Corwin



NWDC “Confluence” Show Receives Press!

Kathy Russell of the **Spokane Arts and Crafts Examiner** has written an article about our current NWDC exhibition ‘Confluence,’ on display at the Chase Gallery in Spokane, WA through October 28th. Please visit the article online: <http://tinyurl.com/3exul3k>.

At Left: “Strap Handled Torso with Comfort Teapot” by Gina Freuen

Call for Entries from Exhibitions Chair:

- Clay

<http://ceramicartsdaily.org/ceramics-monthly/call-for-entries/?floater=99>

- Fiber

NWDC's exhibition that went on in conjunction with the Robert Sperry Symposium and clay throw down was a success and BAM has a call for entry for fiber http://www.bellevuearts.org/exhibitions/upcoming/bam_biennial_2012/index.html

- Glass

E-Merge 2012 <http://www.bullseyeglass.com/emerge/>

New Glass Review <http://www.cmog.org/dynamic.aspx?id=2632>

Metamorphosis: The Magic of Glass Oxford Community Art Center deadline October 10

- On-Line Calls

http://artistsonline.com/call_for_entries/craft_show.htm

<https://www.callforentry.org/calendar.phtml?y=2011&m=10&d=1>

<http://www.cqjournal.com/callforentries.html>

http://www.portlandart.net/archives/calls_for_artists/index.html Portland area

Join www.facebook.com and like crafts Design for on-going call for entries

BAM Biennial 2012: High Fiber Diet

CALL FOR ENTRIES

Submission Deadline: December 15, 2011

Exhibition Dates: October 25, 2012 – February 24, 2013

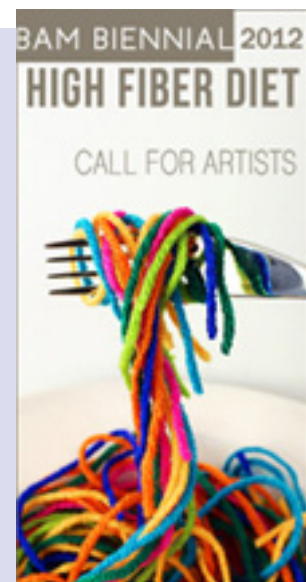
Perspectus:

http://www.bellevuearts.org/resources/exhibition/BAM_Biennial/Prospectus.pdf

DESCRIPTION

In Fall 2010, Bellevue Arts Museum unveiled its inaugural edition of the BAM Biennial, a juried exhibition occurring every two years which focuses on the work of established and emerging Northwest artists and craftsmen, emphasizing current and new work. For each edition, Bellevue Arts Museum designates a new focus of exploration, be it a specific medium, technique, process or theme in art, craft and design. Building on the success of the BAM Biennial 2010: Clay Throwdown!, which launched to much critical acclaim, we are pleased to announce the official call to artists for our next edition in the series, BAM Biennial 2012: High Fiber Diet.

Artists are encouraged to take a creative approach to the fiber medium, considering both traditional expressions of fiber art and the fringes of the medium, where concepts of art and craft merge. The exhibition is intended to recognize the innovative and extraordinary work being produced by contemporary Northwest makers, and to celebrate the region's distinctive character.



.....CONTINUED FROM PREVIOUS PAGE
BAM Biennial 2012: High Fiber Diet CALL FOR ENTRIES

CALENDAR OF IMPORTANT DATES

December 15, 2011 Deadline to receive entries

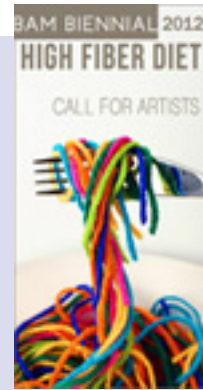
January 2012 Selected artists announced & artists notified

October 8 - 12, 2012 Artwork arrives at BAM, delivered or shipped by artists

October 25, 2012 Exhibition officially opens

February 24, 2013 Exhibition closes

February 25 – March 22, 2013 Artists pick up work or arrange for return shipping (preferred pick up by March 1st)



AWARDS

Two prizes will be awarded: The winner of the John & Joyce Price Award of Excellence will be selected by BAM Curatorial staff upon review of the pieces in the gallery, and the Samuel and Patricia Smith Peoples' Choice Award will be presented on the basis of visitors' votes. The prizes are as follows:

John & Joyce Price Award of Excellence: \$5,000 cash prize plus the possibility of a solo exhibition at Bellevue Arts Museum within 2 years

Samuel and Patricia Smith Peoples' Choice Award: \$5,000 cash prize

2012 JURORS

Once the application deadline has closed, a panel of four jurors will convene to review entries and select approximately 30-40 artists to participate in the exhibition. Artists will be informed in January 2012 as to whether they have been selected, and will have roughly seven months to complete their projects and deliver them to the Museum for installation. Jurors will choose artists to participate in the exhibition, but will not select award winners, as noted above. Jurors for this round of the competition include:

Elissa Auther Author, Associate Professor of Contemporary Art, University of Colorado, Colorado Springs
Elizabeth A. Brown Chief Curator, Director of Exhibitions & Collections, Henry Art Gallery, University of Washington, Seattle

Stefano Catalani Director of Curatorial Affairs, Bellevue Arts Museum, Bellevue

Marci McDade Author, Artist, Former Editor of FiberArts Magazine, Portland

BAM Biennial 2012 Exhibition Prospectus 9/7/2011:

ELIGIBILITY & SUBMISSION MATERIALS

Eligibility will be limited to artists currently residing, working, or studying in the Northwest region, which for the scope of this project will include: Washington, Oregon, Idaho, Alaska, Montana, and British Columbia. Artists may be of any age and at any level of recognition or stage in their artistic careers. Both new and established artists are strongly encouraged to apply.

Artists will be required to submit the following materials by the entry submission deadline:

- completed application with \$40 application fee
- up-to-date resume
- 10-20 images (preferably digital) representing past work with an emphasis on recently completed projects
- project proposal description up to 400 words,
- any supporting proposal documentation such as drawings or sketches

Proposals may be as loosely or succinctly defined as the artist desires. Artists are encouraged to submit the maximum number of images to show a cohesive body of work.

NWDC Show "Touchable"
at Maude Kerns
Show: May 25, 2012 to June 29, 2012

Maude Kerns
<http://www.mkartcenter.org/>
191 East 15th Avenue
Eugene, OR 97403
(541) 345-1571

Call For Entry

Gallery Hours: Monday to Friday: 10.00 AM - 5.30 PM, Saturday: 12.00 PM - 4.00 PM

Inspiration for Show: Work plus a work sample that is touchable
Media: Open to All 2D and 3D
Show: Juried
Images Due: November 1, 2011
Image Size: 300 dpi Images of work representative of what will be produced
Number of Images Up to 2 pcs with detail shots if you'd like to send
Notice of Acceptance: November 15, 2011

Delivery of Artwork: May 16, 2012 10am – 5pm
Opening of Show: May 25, 2012
Artist Reception May 25, 2012 5pm – 9pm

Gallery Commission: 35% Gallery and 65% Artist
Insurance: Gallery Insured upon damage free delivery to Gallery

Installation: May 24, 2012 gallery hung – artist provides install instructions
De-installation Monday, October 31, 2011 8am-finished

Application Must Be Submitted by Mail and Include:

Documentation:

1. Bio (one page)
2. Artist Statement (one pages)
3. CV or Artist Resume (two pages)
4. Title Page
 - Name of the Piece
 - Height, Width, Length of the work in inches or feet and inches
 - Date of Creation
 - Material/Media Information
 - Retail Value of the Piece
 - Display Info (Wall Mount, Pedestal Mount) and security needs artist requires.
5. Images on CD(image info: Taylor,Delores_,name of piece) Please use last name first
6. Photo credits

Mail CD To:
Delores Taylor
20411 NE 198th Street
Woodinville, WA 98077
425 788-0817

“Confluence”

Show: September 7, 2011 to October 28, 2011

Chase Gallery

808 W. Spokane Falls Blvd.

Spokane, WA 99201-3333

Phone: (509) 625-6050 <http://www.spokanearts.org/chase.aspx>

Gallery hours: Monday 8:00am-9:00pm Tues-Friday 8am- 5pm Saturday/Sunday- Closed

Reception Friday, October 7, 2011 5 – 9pm

“The Clay Edge” March 20, 2012 to April 22, 2012

NWDC Ceramic Artist at NW Gallery of Fine Woodworking

www.nwfinewoodworking.com

101 S. Jackson

Seattle, WA 98104

206 625-0542

Store hours: Tuesday - Saturday 10:30 AM to 5:30 PM / Sunday 12- 5 PM Mondays- Closed

Images for National Publicity September 2, 2011

Images for Regional Publicity January 1, 2012

Opening of Show: March 20, 2012

Artist Reception March 29, 2012 5 pm-9pm (artist presence required)

De-installation April 22 or 23rd

Ongoing
NWDC
Shows

**New Member Online Jury in
November
Please Cast Your Vote!**

On November 1 you will receive an email with instructions on how to cast your vote for our next round of NWDC applicants.

This day has been a long time in the making. NWDC members voted this summer in favor of an online jury system accessible to all of our members, not just to those in the Seattle area. Your board has crafted such a system.

Keep your eyes peeled for that email on November 1. You will have 2 weeks to cast your vote. New members will be announced by December 1.

**The NWDC Board met on
September 14th. Items discussed:**

- Creating an online voting process for board members to conduct NWDC business
- It was noted that having the January 2010 meeting on cd was a success since it reached a wider audience
- Joline El Hai and Trudee Hill are preparing for voting on new applicants for membership
- The budget for the rest of the year was presented and approved
- The 60th anniversary exhibition is in early planning stages.

Who Makes NWDC Run?

Who do you click or call if you want to help keep the NWDC gears running smoothly?

President - Megan Corwin - nmegan@mindspring.com 206-781-2646

The President presides over all meetings & conducts business, holds all documents of the group, leads the board, is alert to the membership and creates forums for discussions & goals, temporarily replaces board members who leave mid-term.

Vice President - **Interim** Rosette Gault - rosette@rosettestudio.net 206-284-7805

The Vice President schedules programs, works closely with education chair to organize programs of interest to members, finds location for meetings, provides information to the newsletter, arranges payment to speakers, makes sure events run smoothly.

Secretary - Katherine Holznecht - khartiste@hotmail.com 425-481-7788
Jean Tudor - jeantudor@comcast.net 253-445-1347

The Secretary records minutes at board meetings, requests electronic copies of committee reports to compile an accurate record of the NWDC business, writes a draft of minutes for approval of the board, writes a summary for the newsletter, the final version is sent out, printed and saved to a flashdrive for the archives.

Treasurer - Loren Lukens - lpots@comcast.net 206-935-6740

The treasurer collects & deposits dues, pays bills, keeps & reconciles the budget, presents regular financial reports to the board, prepares a yearly budget, completes tax and filing fee forms, is liason with investment management company, works with accountant when necessary.

Archivist - **Vacant**

The Archivist acts as liason between NWDC & UW Pacific NW Special Collections Library, receives & stores submissions to NWDC archives, takes care of archival printing & binding of the NWDC newsletters, prepares and delivers any further NWDC submissions to the UW Pacific NW Special Collections Library.

Education - Lin Holley - lin@palmstogether.net 206-322-7593
2nd Position **Vacant**

The Education Chair arranges yearly programs, works with VP to secure locations, arranges AV equipment, makes sure the VP gets the publicity into the newsletter, works with Education Publicity Chair to publicize programs.

**Lin Holley is looking for a partner to chair the Education Committee.
It's a great opportunity to talk to some very interesting artists and plan events!**

Exhibitions - Delores Taylor - delores@artglassconcepts.com 425-788-0817

The Exhibition Chair Secures NWDC exhibition opportunities, organizes and works with teams to ensure the logistics for exhibitions. Encourages member participation, maintains a well-rounded committee, attends board meetings, handles exhibition budgets, coordinates with publicity.

“Who’s Who in NWDC Continues on next page.....”

.....“Who’s Who in NWDC Continues from previous page

Hospitality - Lois Harbaugh - lois.harbaugh@gmail.com 425-454-0098

The Hospitality Chair helps us with our parties by getting them organized, sends the information to the newsletter, and communicates with other members of the board as needed.

Membership - **Vacant - Jan. 2012** Joline El-Hai - jblelhai@comcast.net 206-354-8694

The Membership Chair processes new member applications, creates Powerpoint online ballot, tallies ballots and announces new members, advises applicants of result of jurying process, introduces new members at the Annual Membership Meeting, maintains current membership lists, emails NWDC information to members, develops communications materials regarding membership application.

Newsletter - Jan Koutsky - jankoutsky@comcast.net 206-935-2306

The Newsletter Editor receives items from members by the 15th of the month, compiles the newsletter, sends a preview to board members for final editing, sends the final version to the Membership Chair for distribution to NWDC members.

Publicity - Trudee Hill - trudee@trudeehill.com 310-908-6675

The Publicity Chair works with the exhibitions chair to publicize NWDC shows, organizes gallery / venue press releases at regional & national level, maintains a budget, communicates with members, maintains database of press release contacts, sets deadlines for when images are due for press, works with publishers on post cards, brochures, etc., proofs prepress, works with Education chair as necessary.

Roster / Data Base - **Vacant**

The Roster - Database Chair maintains current member list with contact information in a database and hard copy, updates all changes to individual records, supervises the creation of the annual 'Membership Directory'.

Web Liason - Trudee Hill - trudee@trudeehill.com 310-908-6675

The Website Liason receives from membership all updates for web site and works with web master to ensure the NWDC site is current, reviews bill from web developer and forwards to the treasurer, presents updated reports to the board, places periodic updates in the NWDC newsletter, works with committee chairs, updates content on site, occasionally asks for input from board & members to improve NWDC website.

Socials - Don Myhre - donmyhre@mac.com 425-893-9444

Image Bank - Lanny Bergner - lbergner@wavecable.com 360-229-0514

A few words from Newsletter Editor Jan Koutsky.....

I joined NWDC in the spring of 2010 because I wanted to schmooze with fellow artists and to get involved with a group of creative professionals. As soon as I became a member, I started to look for ways to become involved. My own skills include knowing Photoshop and Illustrator. I knew I could put together a newsletter. People frequently think of me as some sort of tech wizard, but I'm really not. I have never used Power Point, I don't know any tricks in Word, I have never exported / imported e-mail addresses, and I am completely dumbfounded by Excel. But, thankfully, we have people on the board who know how to do all those things. The point is... We are all creative people who thrive on studio time, yet we are all a part of a thing called NWDC. We each have a skill to donate to the greater good. Our group will thrive if we each handle a little piece of the pie. Please, Think about YOUR skills. Ask not what NWDC can do for you, but what you can do for NWDC. Call or click a board member today. They will drool with delight.



My hand therapist gave me my career back!

by Joan Tenenbaum

One early morning in April I suddenly couldn't hold my cereal bowl or tie my shoes without excruciating pain in my thumb. I could not do ordinary activities without heart-stopping agony! Now, this is a terrifying situation for a goldsmith at the peak of her career! After fifty-two years of mastering my craft was I to lose it now?

I immediately called my primary care doctor who ordered an x-ray of my hand, and I asked for hand therapy. I had had a thumb injury about twenty years earlier and remembered a therapist making me a splint that protected my hand while still allowing me to work. The x-ray showed mild osteoarthritis. Those previous injuries were coming back to bite me.

As soon as Mary Matthews-Brownell, a Certified Hand Therapist, evaluated my hand, she knew exactly what to do. Over a series of twice-weekly appointments she applied several therapy modalities on my thumb and instructed me in a series of exercises to increase the range of motion and strengthen my hands. She also made several splints for me to wear while working, sleeping and gardening to rest and protect my thumb joints.



The improvement happened almost immediately! With amazement, I was able to return to work and, with my thumb protected, do everything I had done before, with even more confidence! At the end of our sessions together, Mary gave me a series of exercises to strengthen my shoulders, as she explained that stronger shoulders would make for less stress on my hands.



With daily practice of my hand exercises and strength training for my shoulders, I am now pain free almost all the time. When I do feel a twinge of pain in my thumb during any activity, I don one of my protective splints and I am good to go!

For those of us who work with our hands all day every day, seeking the help of a hand therapist is a priceless gift we can give ourselves. Do not wait.

Lloyd Herman

Lloyd Herman, Director Emeritus of the Renwick Gallery of the Smithsonian Art Museum, will take us on a whirlwind visual tour of “craft” as it became recognized as “art” in the past 100 years. In his 20 years at the Smithsonian Institution, and 25 as an independent curator, he has witnessed first-hand the flowering of the surface design, art quilt and wearable art movements, the growing popularity of unorthodox technology and found objects in new works of art, glass as a new art form and the new DIY movement, and will discuss them in the context of the flowering of the American Studio Craft Movement.

June 24 2pm at the BAM

NWDC MEMBERS’ NEWS



“Isadora” by Jan Hopkins
28 x 14 x 9”, 2008, grapefruit peel,
waxed linen, Alaskan yellow cedar
bark and lotus pod tops and sharlyn
melon peels, photo credit Ken Rowe

Two torsos by **Jan Hopkins**
were gifted to the
**Racine Art Museum’s
Permanent Collection**
by Karen Johnson Boyd.
“Isadora” was gifted in
honor of Bruce W. Pepich’s
15 years



“Law Of Identity” by Jan Hopkins
57.5” x 12.5” x 8””, 2009, melon rind,
weathered hydrangea leaves, silver dol-
lar pods and yellow cedar bark



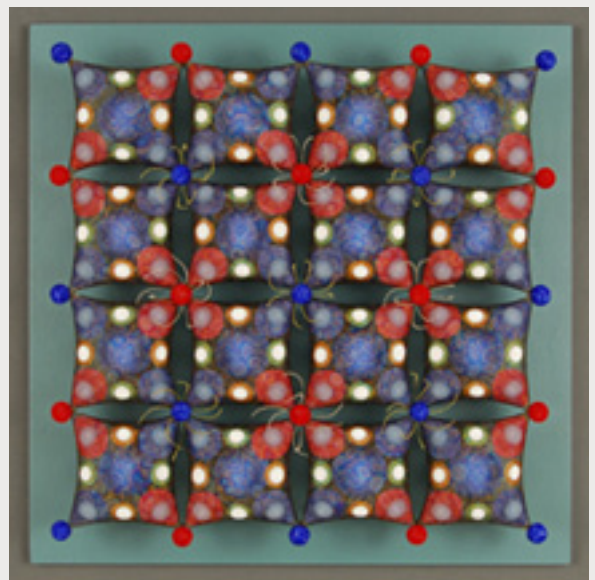
Jan Hopkins is featured on <http://www.ArtSmacked.com/Gallery>
Jan Hopkins Retrospective on ArtSmacked is showcasing the work of this American artist. The online show features a range of works followed by the artist's interview.
<http://artsmacked.com/2011/08/27/jan-hopkins-retrospective/>

NWDC MEMBERS' NEWS

Lanny Bergner's exhibition "Nature's Matrix" will be on view at the Duane Reed Gallery, Saint Louis, MO September 16th – October 15, 2011 in conjunction with "Innovations, A Biennial Textile Event 2011"
<http://www.duanereedgallery.com/shows.html>



Lanny Bergner "Canister for Round Objects"
Stainless steel mesh, linen thread, brass and aluminum wire H14" x W19" x D19"



Lanny Bergner "Flora Grid 7" (Nature's Matrix) : Stainless steel mesh, glass frit, paper, silicone, painted wood backing H22" x W22" x D4"

Lanny Bergner will be exhibiting, "Canister for Round Objects" at the **7th Cheongju International Craft Biennale Juried Exhibition, Cheongju, Korea** September 21 – October 30, 2011
Carol Milne and **Dorothy McGuinness** also have work in the exhibition.

Valley
Fiber Life



Fiber Arts Magazine

Jan Hopkins had an ONLINE INTERVIEW with Valley Fiber Life - Fiber Arts Magazine, by Marcia Young, Editor, June 29, 2011 called, "Orange Peels and Torsos with Jan Hopkins". Follow this link: <http://www.valleyfiberlife.com/imported-data/orange-peels-and-torsos-with-jan-hopkins.html>

Joan Tenenbaum
Stonington Gallery, November 2011

In her 2011 solo exhibition at Stonington Gallery in Seattle, WA Joan Tenenbaum continues her ongoing exploration of the ways in which traditional peoples have rooted themselves within their landscape in order to embrace life. Her work this year will again derive from her ever-deepening understanding of the Alaska Native communities where she lived and continues to visit.



Tenenbaum's exhibit this year takes the form of the Japanese haiga-- a haiku poem combined with a visual image—as she will compose a haiku poem for each major piece of jewelry included in the show. The juxtaposed poetry will add meaning and depth to her observations.

The show will open on November 3rd, 6-8 PM at Stonington Gallery, 119 South Jackson St, Seattle WA 98104. On Sunday, November 6th at 2:00 PM Joan will talk about the stories behind the work, the poetry and the inspiration for this year's show at the Stonington Gallery and is free.



Images:

Above Right:

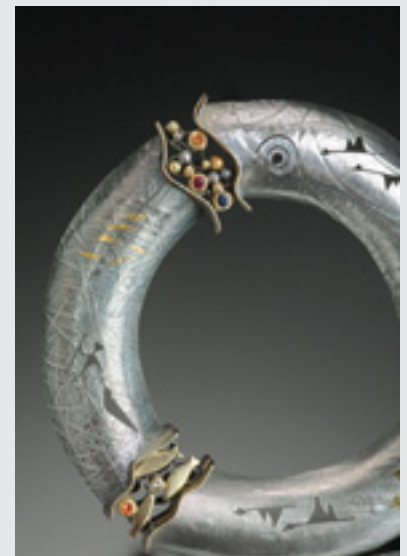
Tundra Swans Ulu Landscape Pendant, Sterling Silver, Dichroic Glass, Keum Boo (Fine Gold and Silver), 2 ½ x 2 9/16 x ½”.

Left:

Bunchberry Pendant, Sterling Silver, 18 Karat Gold, Raw Diamonds, 1 ½ x 2 1/8 x ¼”.

Right:

Feasts of Tradition, Sterling Silver, 14 Karat Yellow, Pink and Palladium White Gold, 18 Karat Green Gold, Keum Boo (Fine Gold and Silver), Champagne Diamond, Red, Blue, Orange, and Green Sapphires, 2 ¾ x 2 3/8 x ½”. View showing detail



OCTOBER							1 New Glass Corning Mus. Deadline
2	3 Mesa deadline	4	5	6	7 NWDC opening at Chase Gallery Spokane 5-9pm	8	
9	10	11	12	13	14 www.seattlemetalsguild.org Seattle Metals Guild at BAM	15 Seattle Metals Guild Symposium	
16	17	18	<div style="border: 1px solid black; padding: 5px; background-color: #f4a460;"> Oct. 12 Ron Ho at Phinney Com. Center 6-7pm Board Meet 7 pm Members' meet Food & non-alcoholic beverages welcome </div>		20	21	22
23	24	25			27	28	29
Weavers' Guild Sale							
30	31						

Deadline for
next news-
letter

NOVEMBER		1 "Touchable" Images Due online voting	2 online voting	3 Tenenbaum@ Stonington 6-8pm online voting	4 online voting	5 online voting
6 Tenenbaum speaks@ Stonington 2pm online voting	7 online voting	8 online voting	9	10	11 online voting	12 online voting
13 online voting	14 online voting	15 Deadline for next newsletter	<div style="border: 1px solid black; padding: 5px; background-color: #ffff00;"> Nov. 9 Lars Husby at Phinney Com. Center 6-7 Board Meet 7 pm Members' meet Food & non-alcoholic beverages welcome </div>		18	19
20	21	22	23	24	25	26
27	28	29	30			



From the NWDC treasurer:

The NWDC fiscal year is now January 1st through December 31st. I should receive your \$50 dues before December 31st, 2011 to remain a member in good standing in 2012. You have recently received an emailed or snail mailed invoice for these dues and your checks have been flooding in. Thank you for your prompt reply. Please keep them coming, made out to NWDC:

Loren Lukens
NWDC treasurer
4208 SW 100th St
Seattle, WA 98146

Have you misplaced your NWDC nametag?

If so I will make a new nametag for you if you send me a digital photo in .jpg format, along with your name, city and state, and media. Please keep the media description short, as there is only room for about 20 characters. If you work in several medias, please pick just one so I don't have to pick it for you.

If you have a spouse or partner who accompanies you to NWDC events, and you want that person to have a nametag send me their name and I will make one for them. We have special nametags for our "Arts Supporters".

This is a one time offer, and I need the information by the end of November. The new nametags will be available to wear at our January all-members meeting at the Frye Art Museum. Please send the info to:

khartiste@hotmail.com

Katherine Holzknicht, Nametag Creator



Seattle Weaver's Guild Sale
Thurs Oct. 27, 5-8pm
Friday Oct. 28, 10am-8pm
Sat. Oct. 29, 10am-5pm

Lower Level Bloedel Hall
St. Mark's Cathedral
1245 10th Ave. E.
Seattle, WA 98102

www.swg-sale.org

Seattle Metals Guild will hold its annual Symposium Oct. 14 & 15 at the Museum of History & Industry with fascinating speakers in the fields of metalsmithing, jewelry arts and related (sometimes just in the creative sense) areas of interest: Julie Blyfield, Charon Kransen, Sergey Jivintin, Helen Carnac and Kristin Beeler. The opening reception at the Bellevue Arts Museum will be in the evening on October 14th. Please check the Seattle Metals Guild website for complete information at: <http://www.seattlemetalsguild.org> Two workshops are being offered by Julie Blyfield and Charon Kransen. For more information about the workshops, contact Megan Corwin at nmegan@mindspring.com

www.FiberArtNow.net

New Fiber Arts Magazine!

Since the unfortunate *demise of Fiberarts magazine*, Marcia Young the creator of the very successful blog, Valley Fiber Arts, is publishing a new magazine, **Fiber Art Now**. She has just gone public with a web site and started taking subscriptions.

Marcia needs our support to help Fiber Art Now get off to a powerful start, first by subscribing, and then spreading the word to other fiber artists, guilds, newsletters, and fiber related businesses. Of course Marcia will also need advertisers, and written and photo content. See the submissions page :

<http://www.fiberartnow.net/submissions>



No "Ask The Geek" in this issue?
No one sent a question!
If you have a need, please e-mail
jankoutsky@comcast.net
It will appear in the next newsletter.



How to submit information to the NWDC newsletter

The deadline is the 15th of the month for the next month's newsletter. What is appropriate to submit? Anything in your professional life you would like to share with NWDC members: exhibits, awards, classes, art or studio sales, studio space, opportunities, call for entries, etc. Be sure to include all the information: who, what, when, where & why.

How should it be formatted? Please send your information in plain text. It can be either in an attached "Word" document, or in the body of an e-mail. The newsletter editor will copy / paste. Please, do NOT send PDF files or jpeg copies of gallery post cards! The newsletter editor cannot copy / paste from PDFs and JPEGs.

What about Images? We want images! They need to be in jpeg format, 72 dpi, about 400 pixels on the longest side. Please include name, title, medium, dimensions, etc.

Website addresses are great too. Because our letter is electronic, those web site addresses will become clickable links.

The deadline is the 15th of the month. If your information arrives to the editor on the 16th, it will not show up in the next newsletter, but it will be saved in a folder for the future newsletter the month after.

Newsletter items should be sent to Jan Koutsky: jankoutsky@comcast.net

Please put "NWDC Newsletter" in the subject line.