



September 2011

www.nwdc-online.org

Northwest Designer Craftsmen

SEPTEMBER @



Phinney Neighborhood Center - Community Hall
6532 Phinney Ave. N. Seattle 98103

THE PHINNEY

Wednesday September 14th 7-9pm



NWDC member [Lynn Dinino](#) and Elinor Maroney, clay artist, will speak about their experiences when nine artists traveled to remote Uganda to help the displaced Batwa Pygmies develop crafts to sell to tourists. Lynn, together with some of her fellow travelers will describe this month-long adventure.

This presentation is the first of our regular "2nd Wed. of the Month" meetings at the Phinney. The Phinney will allow us to bring food & non-alcoholic beverages. Board meeting starts at 6:00pm, followed by the program for members at 7:00.



OCTOBER @ THE PHINNEY

Wednesday October 12 7pm

Ron Ho will show slides of the arts and crafts of Chinese Minority tribes of Guizhou and Yunnan Province in SW China. He will have examples of the costumes, textiles, and jewelry.

6pm Board Meeting
7pm Program for members





Phinney Neighborhood Center 6532 Phinney Ave. N. Seattle 98103

Sept. 14, 2011
6-7 board meeting
7-9 pm **Lynn Dinino** and **Elinor Maroney** talk about crafts in Uganda
Phinney Neighborhood Center - Community Hall

Fall Lectures are about "Travel" & Craft. The Spring series of lectures are on "Inspiration" and why artists make what they make.

Oct. 12, 2011
6-7 board meeting
7-9 pm **Ron Ho**: Chinese Tribes in SW China
Phinney Neighborhood Center - Community Hall

November 9, 2011
6-7 board meeting
7-9 pm **Lars Husby**: About Mexico: arts, crafts, ruins, and a couple of rituals.
Phinney Neighborhood Center - Community Hall

January 22, 2012 2-4pm
Annual Members' Meeting
Frye Art Museum

February 8, 2012
6-7 board meeting
7-9 pm **Image Bank**
Phinney Neighborhood Center - Community Hall

Sunday February 19th 2-4pm
NWDC lecture series at Bellevue Arts Museum
NCECA Panel Discussion

March 14, 2012
6-7 board meeting
7-9 pm **Cameron Anne Mason**
Phinney Neighborhood Center - Community Hall

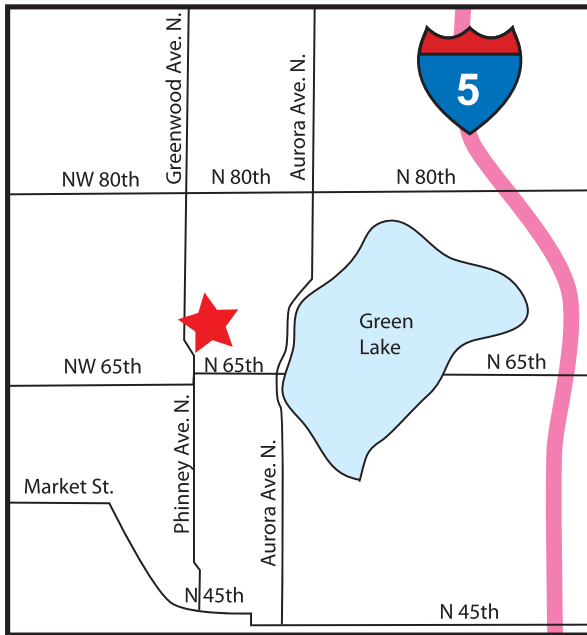
April 11, 2012
6-7 board meeting
7-9 pm To Be Announced
Phinney Neighborhood Center - Community Hall

Sunday April 15, 2012 2-4pm
NWDC lecture series at Bellevue Arts Museum
Patti Warashina

May 9, 2012
6-7 board meeting
7-9 pm To Be Announced
Phinney Neighborhood Center - Community Hall

June 13, 2012
6-7 board meeting
7-9 pm To Be Announced
Phinney Neighborhood Center - Community Hall

Sunday June 24, 2012 2pm
NWDC lecture series at Bellevue Arts Museum
Lloyd Herman: The Evolution of Craft



President's Letter NWDC

First of all, my heartfelt thanks to all of you for coming through and voting on the By-Laws. They are now up to date and workable - so workable that we have been able to redo the Standing Rules. The Board has effective guidelines for day-to-day operations. We have been working tirelessly to get to this point and after a final four-hour meeting, we are now able to say that we can lighten our loads and meet for 1 hour once a month just before the member's meeting and lecture series. We are looking forward to lectures at the Phinney Neighborhood Center and the Bellevue Arts Museum. See this newsletter for a schedule of these meetings and events.

This fall is the first of our new members' online jurying process. Please feel free to solicit applications for membership from artists you think would be interested in joining us, making a commitment to NWDC and expanding our exposure to the craft arts. We ask that all juried members contribute to the organization by working on committees, performing simple one-time jobs, or (best of all) joining the Board of Directors.

Those of you who read the August newsletter will see that it has a new look. We all thank Candyce Anderson for her years of service in delivering us a wonderful newsletter, especially during this last year of change and chaos. Jan Koutsky has joined us as newsletter editor and is sharing her own style. In our last Board meeting, we talked of adding more useful information about the organization itself, such as definitions of the Board and committee positions and a calendar of events (which will develop as we add to it). See page 7 for these job descriptions.

Please read them and make that commitment to serve. Your Board has worked way beyond the call of duty to build a strong foundation for our organization. We have served the equivalent of many years in one. Our wonderful Vice President, Carol Milne, has just resigned after several years of service. We need a replacement ASAP. The jobs are now simple, exciting and now require only a few hours a month. Each and every one of you has the skills and time to take them on. Now is the time to help our organization to thrive. We need you, and by joining this organization you have agreed to step up to help. Please - do it now. Email or call anyone on the Board to volunteer.

Megan

Board & Committee Chairs

| | | | |
|-------------------|-----------------------------------|--------------------------------------------------------------------------------|--------------|
| President | Megan Corwin | nmegan@mindspring.com | 206-781-2646 |
| Vice Pres. | ★ Vacant | | |
| Treasurer | Loren Lukens | llpots@comcast.net | 206-935-6740 |
| Secretaries | Katherine Holzknacht | khartiste@hotmail.com | 425 481-7788 |
| | Jean Tudor | jeantudor@comcast.net | 253-445-1347 |
| Archivist | ★ vacant | | |
| Education | Lin Holley | lin@palmstogether.net | 206-322-7593 |
| | ★ 2nd Education Position - vacant | | |
| Exhibitions | Delores Taylor | delores@artglassconcepts.com | 425-788-0817 |
| Hospitality | ★ vacant | | |
| Membership | Joline El-Hai | jblelhai@comcast.net | 206-354-8694 |
| Newsletter | Jan Koutksy | jankoutsky@comcast.net | 206-935-2306 |
| Publicity | Trudee Hill | trudee@trudeehill.com | 310-908-6675 |
| Acting Web Liason | Trudee Hill | trudee@trudeehill.com | 310-908-6675 |
| Socials | Lois Harbaugh | lois.harbaugh@gmail.com | 425-454-0098 |
| | Don Myhre | donmyhre@mac.com | 425-893-9444 |
| Image Bank | Lanny Bergner | lbergner@wavecable.com | 360-229-0514 |

| | | | | | | |
|------------------|----|----|---------------------------------------------------------------------------------------------------------------------------------------|------------------------------------------|-------------------------------------------|----|
| SEPTEMBER | | | | 1 | 2 "Clay Edge" images due See pg. 11 | 3 |
| 4 | 5 | 6 | 7 "Confluence" opens in Spokane | 8 | Deadline for the next Newsletter | 10 |
| 11 | 12 | 13 | Sept. 14 Meeting at Phinney Com. Center 6-7pm Board Meet 7 pm Members' meet Food & non-alcoholic beverages welcome | 15 500 Prints On Clay deadline see pg. 5 | 16 10x10 deadline at Mesa see pg. 12 | 17 |
| 18 | 19 | 20 | | 22 | 23 | 24 |
| 25 | 26 | 27 | 28 | 29 | Deadline for Wayne Art Center See Page 11 | 30 |

| | | | | | | |
|----------------|----------------------------|-------------------------------------------|----------------------------------------------------------------------------------------------------------------------------------|----|-------------------------------------------|----------------------------------------------|
| OCTOBER | | | | | | 1 New Glass Corning Mus. deadline see pg. 11 |
| 2 | 3 Mesa deadline see pg. 12 | 4 | 5 | 6 | 7 | 8 |
| 9 | 10 | 11 | 12 | 13 | 14 Seattle Metals Guild at BAM see Pg. 15 | 15 Seattle Metals Guild Symposium |
| 16 | 17 | 18 | Oct. 12 Ron Ho at Phinney Com. Center 6-7pm Board Meet 7 pm Members' meet Food & non-alcoholic beverages welcome | 20 | 21 | 22 |
| 23 | 24 | 25 | | 27 | 28 | 29 |
| 30 | 31 | Nov. 1 "Touchables" Images due see pg. 11 | | | | |



IRENE EMBREY has her piece "MEMORY OF A LOST GARDEN" included in The Wichita National All Media CRAFT EXHIBITION, August 27 to September 27, 2011.

NWDC members **Dona Anderson, Lanny Bergner, Danielle Bodine, Jan Hopkins, Dorothy McGuinness, C.A. Michel, and Polly Adams Sutton** have work in the "All Things Considered IV Exhibition" sponsored by the National Basketry Organization at the Fuller Craft Museum.

RAM director, Bruce Pepich and Smithsonian curator from the National Museum of the American Indian, Ann McMullen, juried this invitational/juried exhibition.

July 30 - Dec. 11, 2011
Fuller Craft Museum, Brockton, Mass.

www.fullercraft.org



Danielle Bodine

NWDC Member News

Cheryll Leo-Gwin has received a grant from the City of Bellevue to create nine 36" x 36" full color window decals of her paintings and sculpture based on cultural differences between the US and China during the times of the McCarthy Era, China's Cultural Revolution, Civil Rights, the US Chinese Exclusion Act of 1882, and the women's movement. They will be installed in commercial windows along Bel-Red road, which is an area designated for the future art corridor in Bellevue. The decals will appear in the windows some time in September 2011. Some of the images can be seen at:

<http://www.leo-gwin.com>



Carol Milne's "Ignorance is Bliss"
raku fired clay, 2010
12"H x 8"W x 13"D

Carol Milne's piece "Ignorance is Bliss" won an Honorable mention purchase award at the UVU Woodbury Art Museum show, Art of Our Century, in Orem, UT. The show runs through September 23, 2011.

NWDC Member News



Carol Milne's "Back and Forth"
kiln cast lead crystal
7"H x 4"W x 9"D each, 2011



Carol Milne's "Dwell" kiln cast lead crystal
7" H x 8" diameter, 2010

Carol Milne's two pieces, "Back and Forth" and "Dwell" have been accepted into the 7th Cheongju International Juried Craft Competition in Cheongju, Korea. The show runs from Sept. 21 – Oct. 30, 2011.



Patti King's "Refuge" 2009

'Wrapping Tradition: Korean Textiles Now', opening June 17 at the Museum of Craft and Folk art in San Francisco will include a work by **Patti King**. The show runs through October 22.



Donna Prichard's textile work, "Memory at Two Removes", (37"x37") is in the American Art Company's 11th Northwest Contemporary Quilt Invitational Aug. 13--Oct. 1 1126 Broadway Plaza, Tacoma. Donna has exhibited in all of their 11 shows, spanning some 23 years.

Who's Who - and Who Does What on the NWDC Board?

The President...

presides over all meetings & conducts business, holds all documents of the group, leads the board, is alert to the membership and creates forums for discussions & goals, temporarily replaces board members who leave mid-term.

The Secretary...

records minutes at board meetings, requests electronic copies of committee reports to compile an accurate record of the NWDC business, writes a draft of minutes for approval of the board, writes a summary for the newsletter, the final version is sent out, printed and saved on a flashdrive for the archives

The Exhibition Chair...

secures NWDC exhibition opportunities, organizes and ensures that exhibition logistics are taken care of, encourages member participation, maintains a well rounded committee, handles exhibition budgets, coordinates with publicity chair

The Newsletter Editor...

Receives information by the 15th of the month for news to be published in the following newsletter, compiles newsletter, sends to board members for final editing, sends to Membership Chair for distribution to NWDC members

The Membership Chair...

Processes new applicants, tallies ballots and announces new members, advises applicants of result of jury, sets up Power Point presentation and introduces new members at the Annual Membership Meeting, maintains current membership lists, emails NWDC information to members, develops communications materials regarding membership application

The Archivist...

acts as liason between NWDC & UW Pacific NW Special Collections Library, receives & stores submissions to NWDC archives, takes care of archival printing & binding of the NWDC newsletters, prepares and delivers any further NWDC submissions to the UW Pacific NW Special Collections Library

The Vice President...

Schedules programs, works closely with education chair to organize programs of interest to members, finds location for meetings, provides information to the newsletter, arranges payment to speakers, makes sure events run smoothly

The Treasurer...

collects & deposits dues, pays bills, keeps & reconciles the budget, presents regular financial reports to the board, prepares a yearly budget, completes tax and filing fee forms, is liason with investment management company, works with accountant when necessary

The Education Chair...

arranges yearly programs, works with VP to secure locations, arranges AV equipment, makes sure the VP gets the publicity into the newsletter, works with Education Publicity Chair to publicize programs

The Publicity Chair...

works with the exhibitions chair to publicize NWDC shows, organizes gallery / venue press releases at regional & national level, maintains a budget, communicates with members, maintains database of press release contacts, sets deadlines for when images are due for press, works with publishers on post cards, brochures, etc., proofs prepress, work with Education chair as necessary

The Roster - Database Chair...

maintains current member list with contact information in a database and hard copy, updates all changes to individual records, supervises the creation of the annual 'Membership Directory'

The Website Liason...

receives from membership all updates for web site and works with web master to ensure the NWDC site is current, reviews bill from web developer and forwards to the treasurer, presents update reports to the board, places periodic updates in the NWDC newsletter, works with committee chairs, updates content on site, occasionally asks for input from board & members to improve NWDC website

Summaries of NWDC Board Meetings

6/23/11 NWDC board meeting: After review the voting on Survey Monkey, with 67% of the members approving online voting of new members, the board voted to accept the Bylaws as changed during the retreat at the Freeland library, Whidbey Island. The schedule for upcoming monthly meetings and Sunday afternoon lectures at the Bellevue Art Museum was presented. We voted to join with Contemporary Quilt Arts to hire Craig Ingle to produce a Photographing 3D Artwork CD for the price of \$2,400. This will benefit all members of NWDC. Thanks to CA Michel for organizing the Paul Marioni lecture at BAM, and to Candyce Anderson for creating the newsletter for 5 years! **The full transcription of the June 23rd minutes are available online at:** <https://sites.google.com/site/nwdesignercraftsmen>

7/25/11 NWDC board meeting: Liza Halvorsen reported on the upcoming NCECA convention, and asked how NWDC can be represented. The suggestion to show Robert Sperry's artworks and Living Treasure video was discussed. There was discussion about the NWDC lecture series at the Bellevue Art Museum, and the Confluence exhibit at the Chase Gallery in Spokane. Jan Koutsky is the newsletter editor and talked about new items to be included. Carol Milne is retiring from the board in September, so we need to find a new Vice President to take over. She has scheduled meetings for the upcoming year, and will help with the annual meeting in January. Lois Harbaugh and Don Myhre will be taking over hospitality duties, and will decide how much they want to organize. As voted earlier, the new fiscal year is the calendar year: Jan. – Dec. and the financial report will be given at the January meeting.

8/8/11 NWDC board meeting: Most of the meeting was spent editing the Standing Rules to comply with the Bylaws and be up to date. Members who received printed newsletters will be asked if they can get them via email, to save the expense of printing and mailing.

Jan Koutsky reported on negotiations for the 3D artwork CD, and newsletter additions.

There was more discussion about scheduling for the BAM lecture series. A new policy for email blasts was discussed and approved and follows:

Northwest Designer Craftsmen NEW Email Blast Policy:

All future email blasts will come from NWDC@gmail.com (not from a personal email address). Then they are classified by the subject line:

- 1) NWDC event: such as monthly member meetings
NWDC exhibit: to announce current exhibits and openings
NWDC business: reminder to pay dues
NWDC newsletter: attached to email blast

These types of email blasts will be approved by the President, and should be submitted to Megan Corwin for approval.

- 2) NWDC member news: serious illness, stroke, heart attack, cancer, etc.
NWDC member news: member, spouse, partner or child passed away
NWDC member news: notice about funeral or memorial for deceased

These types of email blasts need to be generated or approved by the member or close relative, and should be sent to Joline El Hai. jblelhai@comcast.net

All other members' announcements about exhibits, sales, classes, lectures and causes or political views should be included in the newsletter, and will not go out as an email blast to the members.



New Member Application Coming Up Fast... Wrangle Up Some Applicants **Pronto!**

October 1 is the deadline for prospective new members to get in their application materials for our new annual online jury process. So far only two applications have been received. New members bring energy, ideas, and talent that benefits us all. Do you know of a wonderful crafts artist who might make a fine addition to the NWDC fold? Now is the time to suggest to them that they apply.

The application and instructions can be found on the NWDC website at:

http://www.nwdc-online.org/NWDC_Application_August_2011.pdf

Please contact me with questions regarding the application process.

Joline El-Hai, Membership Chair

(206)354-8694

jblelhai@comcast.net

New Member Jurying will now have Online Voting

Now that we have voted to approve the changes to our organization's Bylaws that will enable us to view new member applications and vote online, we are ready to implement the NWDC online jurying system.

After careful planning, we have chosen Google Sites as the platform for online application viewing. Don't worry; the site is very user friendly! Google Sites will allow us to download new member applications in a PDF format (which works with MAC and PC) that will look very similar to the PowerPoint presentations we are used to viewing in past New Member Meetings.

Accessing the site will be as easy as clicking on a link sent to you via email. The link will direct you to the NWDC Google Site that will have each new member application listed as a separate PDF document. You'll just have to click 'view' next to the document and the application will open on your computer screen. As usual, the documents will contain the applicant's resume, artist statement, and examples of their work.

NWDC members will have two weeks to review the applications, on their own or with fellow NWDC members. At the end of the two weeks, you will be sent a second email containing a new link to a SurveyMonkey ballot (just like the ballot you recently used to vote on NWDC Bylaws).

Your board is optimistic that this online format will be very user friendly and will allow full member participation in new member selection. Our next member selection will take place in November and as of today, we have two applicants! Be sure to encourage your colleagues to apply for NWDC membership. Applications can be found on the NWDC web site:

http://www.nwdc-online.org/NWDC_Application_August_2011.pdf

If you would like to preview the members' only site where the future applicants materials will be, visit:

<https://sites.google.com/site/nwdesignercraftsmen/>

An emphasis on education

Notes from (former) Vice President Carol Milne

One of the highlights of our April board retreat was to come up with a meeting structure for next year. The board has decided to reduce our number of yearly socials to one (it's difficult to host socials without a hospitality committee), which will coincide with our annual meeting in January. The rest of our meetings will occur on the 2nd Wednesday of the month, beginning September 14th (excluding December) from 7-9 pm at the Phinney Neighborhood Center Community Hall. We hope this doesn't conflict with too many schedules. It sure makes the vice-president's job easier to have a set meeting time and location.

Many thanks to **Lin Holley** who has volunteered to head up the education committee - on the condition that she gets a second person to share the load. Please volunteer to help her! This is a fun, and uncomplicated job requiring a little vision and a few phone calls. Lin has already set up an exciting series of fall programs. The theme is "Travelogues". We'll hear about teaching craft in Uganda from Lynn DiNino, Chinese crafts of SW China from Ron Ho and Mexican crafts from Lars Husby.

In addition, Megan and I have forged a new partnership with Bellevue Arts Museum. We met with Patrick McMahon, the education director at BAM. BAM has agreed to host a NWDC lecture series at the museum, quarterly starting next February. These lectures will be IN ADDITION to our regular meetings. They will be held on Sunday afternoons and be open to the public. They will serve as public outreach, and speak to our mission to educate the public about fine craft. The lectures will be free for our members, but admission to the galleries is not included. It's going to be an exciting year!

But one thing remains unresolved. My term as vice-president has ended. After wrestling with strategic planning, by-laws, standing rules and organizational upheaval, the difficult work is behind us. We have an excellent, fun-loving group of board members. The future looks bright, and our schedule for the year is in place. It's an easy year to be VP. Volunteer. Step up. Serve your organization. It's time.

Carol Milne



NWDC is forming a partnership with "Contemporary Quilt Arts" (CQA) to own a set of digital photography tutorial CDs. Part 1 is how to shop for a camera, purchase lights, set up a photo shoot. Part 2 is about how to shoot 2D art. Part 3 is about how to photograph 3 dimensional art. CQA has already paid a professional photographer to produce part of this series. NWDC is paying for the third part. Once the set is finished, the two groups will have full rights to all the information. We look forward to sharing this with our members in the near future. Updates will be in the newsletter.

OPPORTUNITIES

“The Clay Edge” March 20, 2012 to April 8, 2012
NWDC Ceramic Artist at NW Gallery of Fine Woodworking
<http://www.nwfinewoodworking.com/>

101 S. Jackson
Seattle, WA 98104
206 625-0542

Store hours: Tuesday - Saturday 10:30 AM to 5:30 PM / Sunday 12- 5 PM Mondays- Closed

Images for National Publicity September 2, 2011

Images for Regional Publicity January 1, 2012

Opening of Show: March 20, 2012

Artist Reception March 29, 2012 5 pm-9pm (artist presence required)

De-installation April 10 or 11th

“Touchable” May 25, 2012 to June 29, 2012

Maude Kerns

<http://www.mkartcenter.org/>

191 East 15th Avenue
Eugene, OR 97403
(541) 345-1571

Gallery Hours: Monday to Friday: 10.00 AM - 5.30 PM, Saturday: 12.00 PM - 4.00 PM

Inspiration for Show: Work plus a work sample that is touchable to the public

Media: Open to All 2D and 3D

Show: Juried

Images Due: November 1, 2011

Image Size: 300 dpi Images of work representative of what will be produced

Number of Images: Up to 2 pcs with detail shots if you'd like to send

Notice of Acceptance: November 15, 2011

Delivery of Artwork: May 16, 2012 10am – 5pm

Opening of Show: May 25, 2012

Artist Reception: May 25, 2012 5pm – 9pm

“Craft Forms 2011”

Wayne Art Center’s 17th Annual International Juried Exhibition of Contemporary Craft

December 2, 2011-January 21, 2012

Call for Entries: www.craftforms.com

Deadline: Sept. 15, 2011

Juror: Elizabeth Argo, Curator of American Modern & Contemporary Crafts
and Decorative Arts, Philadelphia Museum of Art

www.wayneart.org

www.craftformsentry.com

OPPORTUNITIES

New Glass Review

Corning Museum of Glass

Deadline: October 1, 2011

<http://www.cmog.org/dynamic.aspx?id=272>

The following opportunities are from:

Mesa Contemporary Arts at Mesa Art Center

P.O. Box 1466

Mesa, AZ 85211

480.644.6567

(f) 480.644.6576

www.mesaartscenter.com

10 X 10 BENEFIT SHOW & SALE

Open to all artists. Now accepting artworks (2-D and 3-D) that are 10 x 10 inches in size.

Exhibition Dates: Oct 4-10, 2011

Artwork Deadline: Friday, Sept 16

No entry fee

See the 2011-12 Season Prospectus for details.

33rd ANNUAL CONTEMPORARY CRAFTS

A national juried exhibition of all craft media.

Exhibition Dates: Jan 27-Mar 18, 2012

Juror: Katie A. Lee, Assistant Director for the Center for Craft,

Creativity & Design in Hendersonville, NC

Submission Deadline: Monday, Oct 3, 2011

\$2,000 in juror awards

Entry Fee: \$25

See the 2011-12 Season Prospectus for details.

DR. RUTH TAN LIM PROJECT ROOM PROPOSALS

Now accepting proposals for this experimental exhibition space dedicated to the display of solo and collaborative work in all mediums.

Submission Deadline: Friday, Dec 16, 2011

Small stipend offered to proposal winners

Entry Fee: \$25

See the 2011-12 Season Prospectus for details.

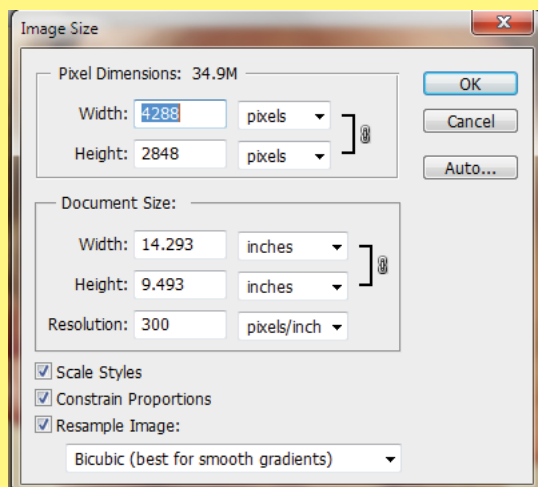
For more information, please visit our website : www.mesaartscenter.com



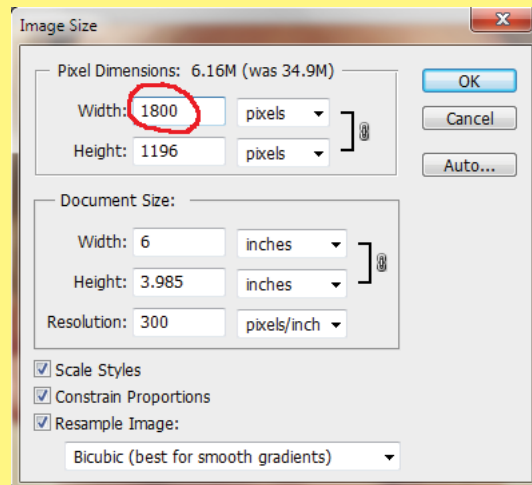
Preparing Digital Images for Submissions

In last month's newsletter, I talked about resolution: 72 dots per inch for the Web, and 300 dots per inch for printed images. It is best, when shooting the photographs, to set your camera for the highest image quality possible. Look for settings for 'best' or 'raw'. The computer can eliminate information - such as reducing the dpi, but it cannot invent information that is not there. There are many issues when photographing art. Coming soon to NWDC members is a 3 part series (on CDs) about digital photography. The lessons talk about choosing a camera, lighting, setting up a photo shoot, etc. For this newsletter, I am going to assume you already have digital photos of your art. What I want to talk about here is how to prepare them for submission to galleries, call for art, Café Press, etc. There are many options for software: Photoshop, Elements, GIMP (freebie on the Internet). For most of us, "Elements" is the perfect thing to use. It is a scaled down version of Photoshop, made by Adobe, and sells for a lot less than the full version.

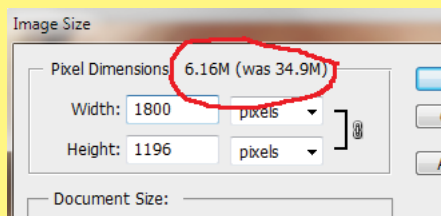
To get started, open the software and open the image you wish to prepare. Click on the Image Menu and look for 'image size' or 'resize'. We want to end up at a preference box that looks something like this:



Let's use the example of a submission that requires your images to be 300 dpi with 1800 pixels on the longest side. If you look at this image resizing box, you will see the upper portion gives the pixel dimensions, with the dimensions in inches in the lower part. The easiest thing to do is to change the pixels size in the upper boxes. The other dimension will automatically resize mathematically while staying in proportion.

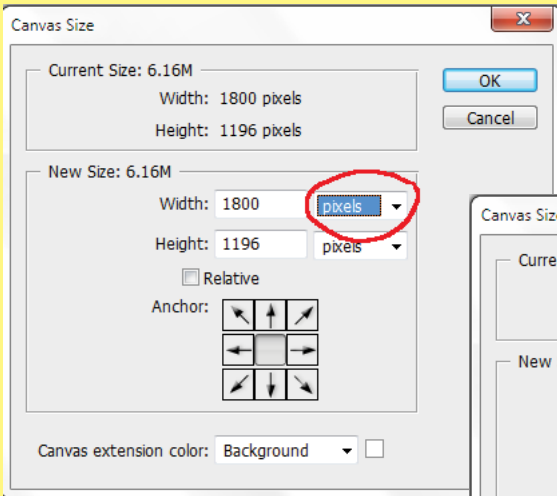


The amount of memory for this image drops considerably when this image is made smaller. It will be more "Internet Friendly" with less memory used.



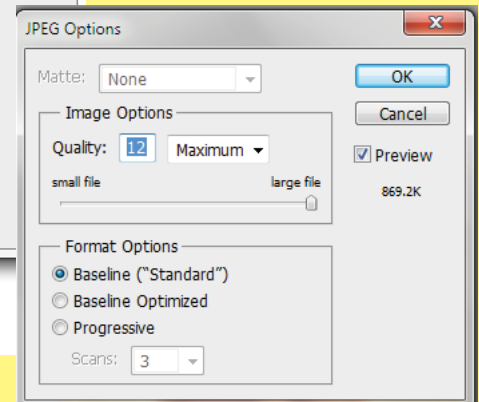
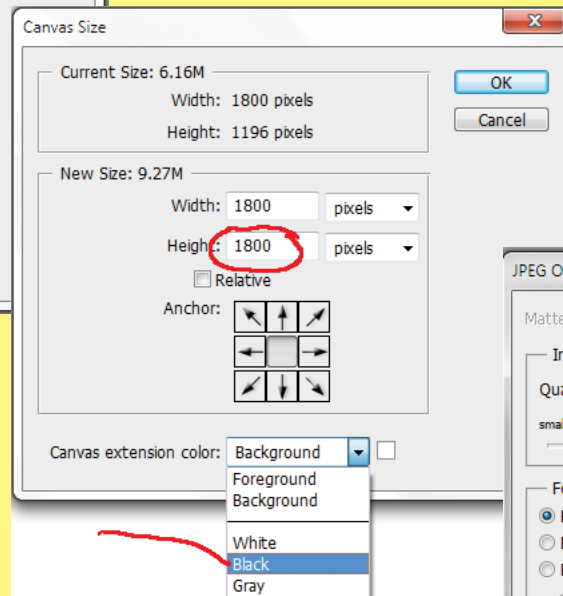
..... continued on next page

Some submission sites ask for the image to be square with black filling the extra space. In this example, the art is rectangular. If we make the image 1800 pixels square, the extra area can easily be filled with black. To do this, look under the Image Menu for "Canvas Size". Canvas size allows us to add more work area - like taping more paper onto the edge. It allows us to make more space. Take a look at the box below. Be sure the option is set for 'pixels' in order to see the pixel count of 1800 that we set previously.



Change the other pixel count to 1800. From the drop down box below, choose 'black' as the background color. Click OK, and you will be set. Finally, let's save the image as a jpeg. Click on the File Menu / Save As, and choose JPEG from the drop down list of file types. A preference box will pop on the screen. Choose the best quality and maximum setting. Be sure to title the file

according to the submission specifications. Perhaps, make a folder specifically for these images so that you will know where to locate them later.



And that's it. Done!

Do you have a question for the 'geek'?
Please e-mail jankoutsky@comcast.net

How to submit information to the NWDC newsletter

The deadline is the 15th of the month for the next month's newsletter. What is appropriate to submit? Anything in your professional life you would like to share with NWDC members: exhibits, awards, classes, art or studio sales, studio space, opportunities, call for entries, etc. Be sure to include all the information: who, what, when, where & why.

How should it be formatted? Please send your information in plain text. It can be either in an attached "Word" document, or in the body of an e-mail. The newsletter editor will copy / paste. Please, do NOT send PDF files or jpeg copies of gallery post cards! The newsletter editor cannot copy / paste from PDFs and JPEGs.

What about Images? We want images! They need to be in jpeg format, 72 dpi, about 400 pixels on the longest side. Please include name, title, medium, dimensions, etc.

Website addresses are great too. Because our letter is electronic, those web site addresses will become clickable links.

The deadline is the 15th of the month. If your information arrives to the editor on the 16th, it will not show up in the next newsletter, but it will be saved in a folder for the future newsletter the month after.

Newsletter items should be sent to Jan Koutsky: jankoutsky@comcast.net

Please put "NWDC Newsletter" in the subject line.

Next Newsletter Deadline: **September 15** for the October issue.



Cross Pollenation



Do you belong to another group?

Seattle Bead Society? Metal Arts? Weavers' Guild? Clay? Wood? Glass?

Can we visit each other's events? Share speakers? Join together for mutual benefit? Please share your OTHER news with NWDC - and we would like to do the same back. Contact a board member, please, and we can get this rolling.

The Northwest Jewelry and Metals Symposium

Every year the Seattle Metals Guild holds the Northwest Jewelry and Metals Symposium with fascinating speakers in the fields of metalsmithing, jewelry arts and related (sometimes just in the creative sense) areas of interest. This year we are having the event at the Museum of History and Industry near the Arboretum with 5 presenters from around the world include Julie Blyfield from Australia, Charon Kransen from Holland via NY, Sergey Jiventin from Russia via NY, - Helen Carnac from England and Kristin Beeler from Long Beach, CA.

The Symposium happens on **October 15th at MOHAI**. The reception at the **Bellevue Arts Museum will be in the evening on October 14th**. Please check the Seattle Metals Guild website September 1st for all the information you need to attend, registration fees and all the rest (there is plenty more).

The Seattle Metals Guild is offering two exciting workshops in conjunction with the Symposium:

Julie Blyfield is offering a three-day workshop, **October 21, 22 and 23, 2011** on "The botanical landscape - sketching, maquette making and the technique of chasing". Students will be collecting plant material, sketching and then learning to interpret their sketches in metal by manipulating it in pitch. No experience necessary (and no pitch necessary - the school supplies it). The course runs from 9:30 to 5pm each day and is held at North Seattle Community College. Registration is \$375 for members and \$425 for non-members of the Seattle Metals Guild. See the Guild website, www.seattlemetalsguild.org for complete information starting September 1st.



"Paris Collection" by Julie Blyfield

The second workshop opportunity is a seminar run by **Charon Kransen**, gallery artist, and educator from New York. He will conduct a comprehensive seminar on how to find your own identity as a jewelry artist. Charon will focus on how to develop a cohesive, unique vision and style rather than tailoring your work to a preconceived idea of what the commercial market demands. Charon Kransen teaches this highly successful workshop throughout the world and we really appreciate his taking the time out of his amazing schedule to help us reach our individual potential. This seminar will meet at Seattle Pacific University **October 16th and 17th** from 9:30 to 5. The cost will be \$225 for members and \$260 for non-members Seattle Metals Guild. Again, for more information please go to www.seattlemetalsguild.org.

<http://www.seattlemetalsguild.org/>

Contemporary Quilt Arts (CQA) meets on the second Saturday each month at the SPU campus. Their guest speakers' presentations are open to the public. A schedule of events is available on their web site at: <http://www.contemporaryquiltart.com>