



# Northwest Designer Craftsmen

[www.nwdc-online.org](http://www.nwdc-online.org)

November 2011

Members' Only Site:

<https://sites.google.com/site/nwdesignercraftsmen>



## NOVEMBER



## PHINNEY

Nov. 9

6-7 Board Meeting

7-9 pm **Lars Husby** "About Mexico: arts, crafts, ruins, and a couple of rituals."

The Phinney allows us to bring food and non alcoholic beverages. These Wednesday evening presentations are separate from our 'potluck socials', but it still adds to the evening to have a few finger food munchies. If you feel inclined to bring something to share, it will be appreciated. The next potluck party will be Dec. 10th at David Chatt's. Take a look at the listings below and mark your calendars! We have good things brewing!

November 9, 2011  
6-7 board meeting  
7-9 pm **Lars Husby**  
Phinney Neighborhood Center  
Community Hall

December 10, 2-4pm  
Holiday Potluck @ David Chatt's

January 20, 2012  
2-4pm  
**Annual Members' Meeting**  
Frye Art Museum, Seattle

February 8, 2012  
6-7 board meeting  
7-9 pm **Image Bank**  
Schack Art Center - Everett

Sunday February 19th 2pm  
NWDC lecture series at BAM  
**NCECA Panel Discussion**

March 14, 2012  
6-7 board meeting  
7-9 pm **Cameron Anne Mason**  
Phinney Neighborhood Center  
Community Hall

April 11, 2012  
6-7 board meeting  
7-9 pm **Margaret Ford**  
Phinney Neighborhood Center  
Community Hall

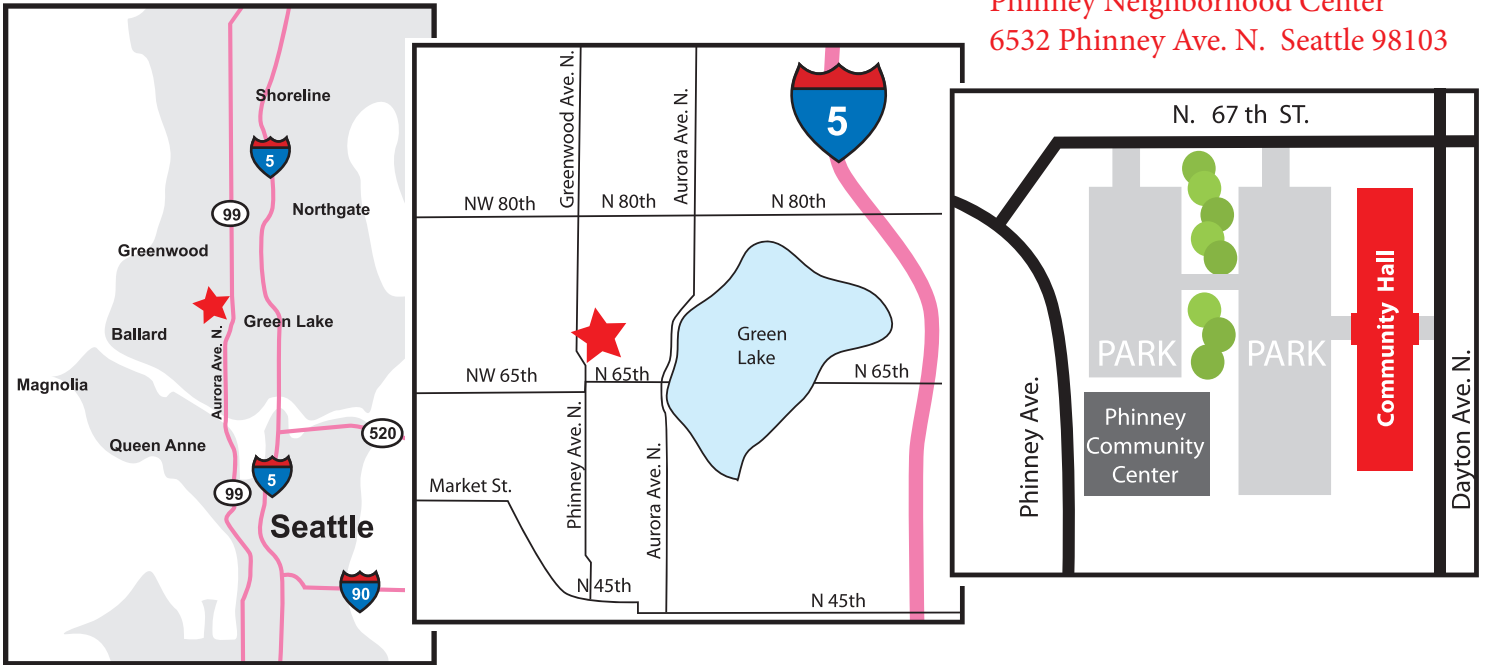
Sunday April 15, 2012 2pm  
NWDC lecture series at BAM  
**Patty Warashina**

May 9, 2012  
6-7 board meeting  
7-9 pm (being finalized)  
Phinney Neighborhood Center  
Community Hall

June 13, 2012  
6-7 board meeting  
7-9 pm **Mary Ann Peters**  
Phinney Neighborhood Center  
Community Hall

Sunday June 24, 2012 2pm  
NWDC lecture series at BAM  
**Lloyd Herman**  
The Evolution of Craft

How to Find the Phinney?



Phinney Neighborhood Center  
6532 Phinney Ave. N. Seattle 98103

**Miao!**

That may be the sound your cat makes, but it is also the name of one of the minority tribes of Southwest China. Ron Ho delighted us at our October meeting with a spectacular presentation about his trips to China to visit the Miao people in Yunnan and Guizhou provinces.

Ron's presentation was packed full of exquisite photographs and interesting anecdotes. (Did you know that Ron has been known to sing and play the accordion for his supper?) And besides the usual photographs of rice fields, mountains and landscape .. he showed us the important stuff: the jewelry, head-dresses, embroidered costumes, "process" photos of tie-dying, batik and dying cloth as well as the hand built kilns along the way. Where else but at an NWDC meeting!



I was amazed to see how different the costumes were between the branches of the Miao. The head-dresses alone made my jaw drop. Many of them were twice the size of your head, and looked very cumbersome and heavy, ... but oh so stylish!

To top it all off, Ron had two tables covered with actual objects we could fondle. Yes! Colorful, hand-embroidered jackets made with thread so fine even the spiders were envious; Large silver necklaces more like breastplates; Intricate indigo tie-dyed cloth; and much, much more.

I'm sure Lars Husby will be equally entertaining in November, but Ron's a hard act to follow.

Thanks, Ron!

Incidentally, Ron often leads guided tours to Vietnam and SE Asia. If this talk is any indication, he'd be an excellent guide.

By Carol Milne

## President's Letter

We are delighted to announce that **Rosette Gault** has agreed to step in as our new Vice President! Thank you Rosette! Ron Pascho joined us as he prepares to take over Exhibitions in January. It was great to serve with him again (Ron was secretary when I first came on as Publicity two years ago). Once again we had a congenial meeting with a lot of ground being covered in fifty efficient minutes. We are gearing up for our first on-line jurying experience. Voting starts on November 1st, so take some time to look over our 7 new member applications on page 4.

When the Board first outlined the on-line jury process we were a little concerned that people may be voting in a vacuum. So we came up with our dream on-line voting scenario. We see members in their various communities gathering together at one member's house or at their local library around a computer with a nice large monitor. Maybe there is a little food, a little drink, some soft music (or just a nice space). The new members' images and information scroll by and a lively discussion ensues. Instead of the same twenty to thirty people voting in Seattle for new members, we now have individuals and groups of members from all five of the NWDC states discussing what they see and sharing their knowledge of the various media and potential new members.

Joline El-Hai, our membership chair, will be sending you some criteria to consider when reviewing the work. Keep in mind, we are not only interested in high quality, professional work, but in the artist and their commitment to NWDC. Each new member will be expected to help our organization in some capacity. The same expectation we have of all members.

Finally, I would like to thank Ron Ho on behalf of the Board and the membership for the excellent presentation he gave on October 12th at the Phinney Neighborhood Association Community Hall. He showed some of the most beautiful images of the Chinese minority tribes and landscape that I have ever seen. Ron brought examples of the exquisite textiles, clothing and metalwork from a variety of districts for us to handle. His thoughtful comments enriched the visual experience. Thank you, Ron!

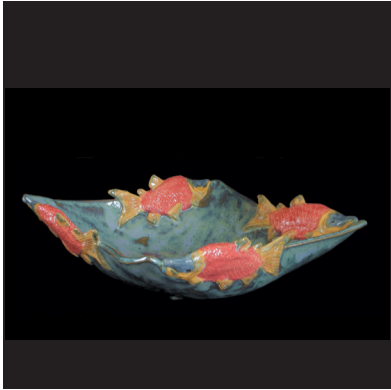
Megan Corwin

### Summary of the NWDC Board meeting 10/12/11:

**Rosette Gault** has stepped up to be interim Vice President, and was introduced to the board and members. There was discussion about budgets for education and hospitality committees, the holiday party and annual meeting at the Frye Art Museum in January 2012. Also discussed was the upcoming online jurying of the seven applicants for membership, upgrading the website to post members news, and possibly adding a video of the annual meeting. There are more than **30 members who have not paid their \$50 dues yet**, which will cause a serious funding problem. Please send your check to Loren Lukens ASAP!

A copy of the full minutes are online at: <https://sites.google.com/site/nwdesignercraftsmen/>

# NWDC APPLICANTS



Kathy Huckleberry

[www.naturalceramicvisions.com](http://www.naturalceramicvisions.com)



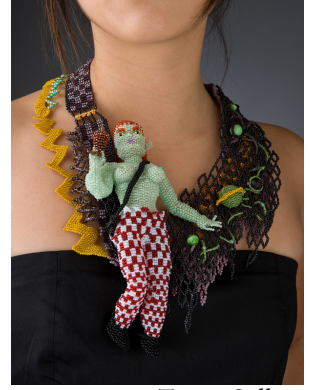
Eva Funderburgh

[www.evafunderburgh.com](http://www.evafunderburgh.com)



Gail Lurie

[www.galeluriepotttery.com](http://www.galeluriepotttery.com)



Teresa Sullivan

[www.teresasullivanstudio.com](http://www.teresasullivanstudio.com)

New Member Voting IS NOW

We have a great line up of seven prospective NWDC members!  
Please watch your e-mail. Coming very soon (any minute now) is information about each applicant along with voting instructions. **You have until November 15** to vote via our online voting system.

Watch for the e-mail!

Questions? Contact:

Joline El-Hai, NWDC Membership Chair

[jblelhai@comcast.net](mailto:jblelhai@comcast.net)

## Cast Your Vote by Nov. 15



Lisa Bulmash Myers

[www.bloggingqueen.com](http://www.bloggingqueen.com)



Julia Rapinoe



Lin McJunkin

[www.mcjunkinglass.com](http://www.mcjunkinglass.com)



# NWDC MEMBERS' NEWS



Jill Nordfors Clark  
"AFTER CALDER II"  
Hog casings-layered and  
stitched, wire 20.5" h x 8.5"



Zia Gipson  
Hand Felted  
wool scarves



Polly Adams Sutton  
"Tuk" cedar bark, ash & spruce root  
6" x 9" x 8"



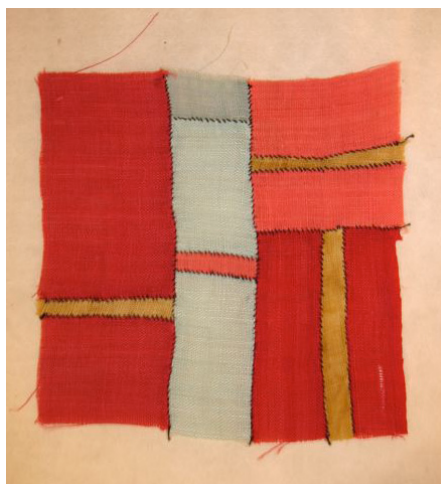
CA Michel  
"Renewal" Coiled: Wool coiled  
over linen with inserted feathers  
10" W. X 4.5" H.

Eleven NWDC Members are participating in "GATHERED" at **MUSEO GALLERY** in Langley on Whidbey Island. Everyone is invited to the opening on Saturday, November 5 5 to 7 pm. <http://www.museo.cc>

NWDC participating artists are: Candyce Anderson, Dona Anderson, Lanny Bergner, Danielle Bodine, Jill Nordfors Clark, Zia Gipson, Jan Hopkins, Patti King, C.A. Michel, Marilyn Moore, Polly Adams Sutton



Donna Anderson  
"Hershey's Kisses"  
Paper, 52"h x 40"w x 5"d



Patti King  
"Strata"  
Hand-stitched, natural dyed ramie  
4.5in x 4.5 in



Danielle Bodine  
"Do-it-yourself Sculpture Kit"  
Size varies 22"-4" H x 3"-10" W

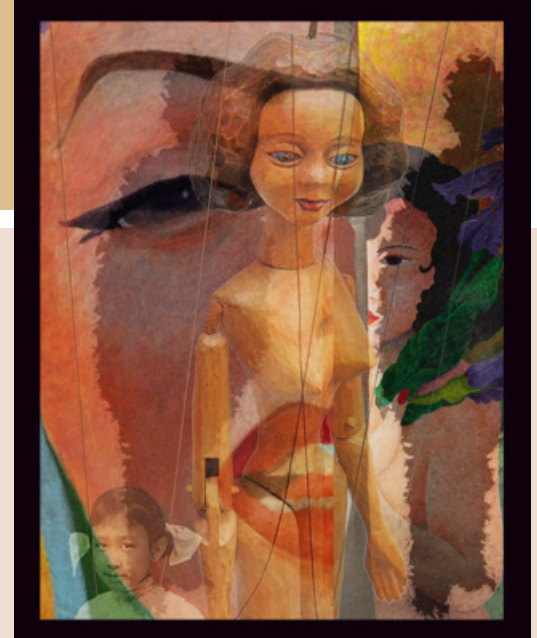
## NWDC MEMBERS' NEWS

**November 16 - 5:30-8:30pm**

**Ron Ho**, in conjunction with **Clarke & Clarke / Art + Artifacts**, are hosting a gathering at their remarkable shop at:  
2709 152nd Ave NE/ Building #6  
Bellevue/Redmond WA.  
425 516-9921

[www.EthnoArts.com](http://www.EthnoArts.com)

Ron will be discussing his upcoming tour to Vietnam (available January 7-23, 2012) which will include visits to museums, artists, cultural experiences and feature the exquisite cuisine of Vietnam.



“Girls from the Cribs” Print/Decal (30” x 40”)

## Cheryll Leo-Gwin

Sanwei Exhibition, Beijing - October 1 - November 15, 2011  
Cultural Windows Exhibition - Sternco Shopping Center, Bellevue Sept. 23-November 30, 2011

Cheryll Leo-Gwin presented her new series of paintings and prints in her lecture at the Bellevue Arts Museum on September 23rd, 2011. This series of new work was created over 3 years resulting from two Special Projects Grants from the City of Bellevue, and a 2007 Special Projects Grant from 4Culture.

Based on a century of history in China and America, this new work focuses on issues and events surrounding women and families in both countries. Her use of narrative, vivacious color, and luscious imagery are superimposed over underlying stories bearing witness to human responses in relation to context of time and place. The work can be seen through November, 2011 at the Sanwei in Beijing, China, and also at the Sternco Shopping Center - within the Bel/Red area of Bellevue, an area identified as a future arts district.



“The Rice Man Doth Not Cometh” Print/Decal (30” x 30”)

For the exhibition at the Sanwei in Beijing, Cheryll created prints on paper, with descriptions of the work in English and in Mandarin. For the work for the Bel/Red area of Bellevue, the artist created large scale commercial decals using the same images and mounted on the windows in the Sternco Shopping Center in Bellevue as a public art installation.

More images can be seen at <http://www.leo-gwin.com>.



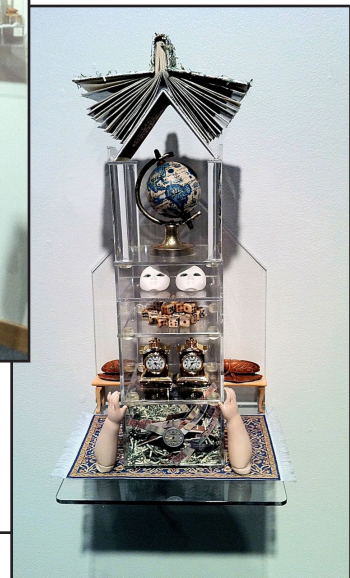
# NWDC MEMBERS' NEWS



NWDC  
"Confluence"  
Exhibit



Chase Gallery in Spokane



## NCECA @ BAM

In 2012 the **National Council on Education for the Ceramic Arts** annual conference will be held in Seattle. Thousands of visitors will come to Seattle and the Pacific Northwest to see the best and brightest of contemporary ceramic work. Join Bellevue Arts Museum's own **Stefano Catalani**, UW Professor **Jamie Walker**, arts professional **Marge Levy**, and **Wally Bivins** Director of Pottery Northwest for a panel discussion and preview of the exhibitions and artists involved in this national event Sunday February 19th 2pm at BAM.

## NWDC Member Events Mark Your Calendars!

Saturday, Dec 10 2:00 - 4:00  
NWDC Potluck Holiday Party  
at David Chatt's

## HOLIDAY PARTY

David Chatt is hosting our holiday party! He's back in town with fabulous new work, unlike anything he's done before. Come see and party at his place:  
2007 NW 61st St.  
Seattle 98107

Bring a potluck dish

## Lloyd Herman

Lloyd Herman, Director Emeritus of the **Renwick Gallery of the Smithsonian Art Museum**, will take us on a whirlwind visual tour of "craft" as it became recognized as "art" in the past 100 years. In his 20 years at the Smithsonian Institution, and 25 as an independent curator, he has witnessed first-hand the flowering of the surface design, art quilt and wearable art movements, the growing popularity of unorthodox technology and found objects in new works of art, glass as a new art form and the new DIY movement, and will discuss them in the context of the flowering of the American Studio Craft Movement.

June 24 2pm at the BAM

I  
N  
M  
E  
M  
O  
R  
I  
U  
M



### NWDC member Liz Checkley Manfredini died on October 2, 2011.

Liz had been a member of NWDC since 1995, and was known primarily as a bead artist. Her work can be seen at [www.manfredinidesign.com](http://www.manfredinidesign.com). Her creativity was inspiring. She was able to make marvelous jewelry and sculpture out of seed beads. She was an exceptionally accomplished 3D bead artist. She was also an avid collector of folk art. The home she shared with her husband, Joe Manfredini, is crammed with art from all over the world, though primarily Asia. Her father was a Japanese kite collector and the ceiling in her home is covered with kites.

Liz had been ill for the past few years and she was frustrated with how this impacted her ability to make art. As her abilities declined, she switched to mediums that she could continue to work with. Her need to create did not dwindle. On a personal note, I will miss her most, I think, for her marvelous sense of humor. She was an iconoclast, and as such, funny and outspoken.

Rebecca Roush



NWDC Show "Touchable"  
at Maude Kerns  
Show: May 25, 2012 to June 29, 2012

# Call For Entry

Ongoing  
NWDC  
Show

Maude Kerns  
<http://www.mkartcenter.org/>  
191 East 15th Avenue  
Eugene, OR 97403  
(541) 345-1571

Gallery Hours: Monday to Friday: 10.00 AM - 5.30 PM, Saturday: 12.00 PM - 4.00 PM

Inspiration for Show: Work plus a work sample that is touchable  
Media: Open to All 2D and 3D  
Show: Juried  
Images Due: **November 1, 2011**  
Image Size: 300 dpi Images of work representative of what will be produced  
Number of Images: Up to 2 pcs with detail shots if you'd like to send  
Notice of Acceptance: November 15, 2011

Delivery of Artwork: May 16, 2012 10am – 5pm  
Opening of Show: May 25, 2012  
Artist Reception: May 25, 2012 5pm – 9pm

Gallery Commission: 35% Gallery and 65% Artist  
Insurance: Gallery Insured upon damage-free delivery to Gallery

Installation: May 24, 2012 gallery hung – artist provides install instructions  
De-installation: Monday, October 31, 2011 8am-finished

Application Must Be Submitted by Mail and Include:

Documentation:

1. Bio (one page)
2. Artist Statement (one page)
3. CV or Artist Resume (two pages)
4. Title Page
  - Name of the Piece
  - Height, Width, Length of the work in inches or feet and inches
  - Date of Creation
  - Material/Media Information
  - Retail Value of the Piece
  - Display Info (Wall Mount, Pedestal Mount) and security needs artist requires.
5. Images on CD(image info: Taylor,Delores\_,name of piece) Please use last name first
6. Photo credits

Mail CD To:  
Delores Taylor  
20411 NE 198th Street  
Woodinville, WA 98077  
425 788-0817

## Upcoming NWDC Show

**“The Clay Edge”** March 20, 2012 to April 22, 2012  
NWDC Ceramic Artist at NW Gallery of Fine Woodworking  
[www.nwfinewoodworking.com](http://www.nwfinewoodworking.com)

101 S. Jackson  
Seattle, WA 98104  
206 625-0542

Store hours: Tuesday - Saturday 10:30 AM to 5:30 PM / Sunday 12- 5 PM Mondays- Closed

Images for Regional Publicity January 1, 2012

Opening of Show: March 20, 2012

Artist Reception March 29, 2012 5 pm-9pm (artist presence required)

De-installation April 22 or 23rd

### Call for Entries from Exhibitions Chair:

- Clay

<http://ceramicartsdaily.org/ceramics-monthly/call-for-entries/?floater=99>

- On-Line Calls

[http://artistsonline.com/call\\_for\\_entries/craft\\_show.htm](http://artistsonline.com/call_for_entries/craft_show.htm)

<https://www.callforenry.org/calendar.phtml?y=2011&m=10&d=1>

<http://www.cqjournal.com/callforentries.html>

[http://www.portlandart.net/archives/calls\\_for\\_artists/index.html](http://www.portlandart.net/archives/calls_for_artists/index.html) Portland area

Join [www.facebook.com](http://www.facebook.com) and like crafts Design for on-going call for entries

### BAM Biennial 2012: High Fiber Diet

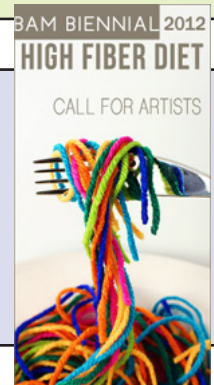
CALL FOR ENTRIES

Submission Deadline: **December 15, 2011**

Exhibition Dates: October 25, 2012 – February 24, 2013

Perspectus:

[http://www.bellevuearts.org/resources/exhibition/BAM\\_Biennial/Prospectus.pdf](http://www.bellevuearts.org/resources/exhibition/BAM_Biennial/Prospectus.pdf)



### Clay? IV Kirkland Arts Center Exhibition

**March 26 - May 19, 2012**

Juried by University of Washington, School of Art Professors Doug Jeck, Jamie Walker, and Akio Takamori

**Deadline for Entries: Sunday, January 8, 2012**

Kirkland Arts Center is proud to present the fourth installment of its biennial contemporary ceramics exhibition, Clay? IV in conjunction with the National Council on Education for the Ceramic Arts' (NCECA) 46th annual conference in Seattle, Washington. Juried by University of Washington, School of Art Professors Doug Jeck, Jamie Walker, and Akio Takamori, Clay? IV explores the versatility of clay as a medium of expression. Showcasing a range of sizes, scales, subject matter, and techniques, the artwork of this exhibition is both a testament to the enduring legacy of clay and to the future of the field.

Online Application & Information: <http://www.formstack.com/forms/?1122093-kpTQlZQtwg>

## Call For Entry 18th Annual Benefit: Juried Show and Sale Wearable Art

The YWCA RAGS Guild announces a call for entries for its 18th annual juried wearable art show and sale.

The RAGS 2012 event will take place **March 9-11, 2012** at the new Larson's Mercedes-Benz of Tacoma in Fife: 1701 Alexander Ave. East in Fife. THE RAGS GUILD urges everyone to make a note of the venue change for the March event.

RAGS is open to all artists working in all media of wearable art garments, fashion accessories and jewelry. Two entry types with nonrefundable fees are accepted:

- Gallery - competition of one-of-a-kind artist made pieces (\$15 per entry up to three entries)
- Marketplace - boutique style sale (\$35 entry fee)

All initial entries are juried from digital images. Accepted gallery entries are judged for award from actual works in late February 2012. Cash prizes are awarded to gallery winners in garments, accessories / jewelry, and best of show. To support the domestic violence prevention and intervention programs of the YWCA Pierce County, RAGS retains 33% of sales in the Marketplace and 40% of sales in the Gallery.

**Deadline for submitting digital images is December 16, 2011.** For prospectus and entry form, visit [www.ragswearableart.org](http://www.ragswearableart.org), or send an SASE to Artist Coordinator, YWCA RAGS Guild, 405 Broadway, Tacoma, WA 98402. For more information, call the RAGS hotline at 253-272-4181 ext. 352

### How to submit information to the NWDC newsletter

**The deadline is the 15th of the month** for the next month's newsletter. What is appropriate to submit? Anything in your professional life you would like to share with NWDC members: exhibits, awards, classes, art or studio sales, studio space, opportunities, call for entries, etc. Be sure to include all the information: who, what, when, where & why.

**How should it be formatted?** Please send your information in plain text. It can be either in an attached "Word" document, or in the body of an e-mail. The newsletter editor will copy / paste. Please, do NOT send PDF files or jpeg copies of gallery post cards! The newsletter editor cannot copy / paste from PDFs and JPEGs.

**What about Images?** We want images! They need to be in jpeg format, 72 dpi, about 400 pixels on the longest side. Please include name, title, medium, dimensions, etc.

Website addresses are great too. Because our letter is electronic, those web site addresses will become clickable links.

**The deadline is the 15th of the month.** If your information arrives to the editor on the 16th, it will not show up in the next newsletter, but it will be saved in a folder for the future newsletter the month after.

Newsletter items should be sent to Jan Koutsky: [jankoutsky@comcast.net](mailto:jankoutsky@comcast.net)

Please put "NWDC Newsletter" in the subject line.





## Who are the Chefs creating the NWDC pie?

### **President** - Megan Corwin -

[nmegan@mindspring.com](mailto:nmegan@mindspring.com) 206-781-2646

The President presides over all meetings & conducts business, holds all documents of the group, leads the board, is alert to the membership and creates forums for discussions & goals, temporarily replaces board members who leave mid-term.

### **Vice President** - **Interim** - Rosette Gault -

[rosette@rosettestudio.net](mailto:rosette@rosettestudio.net) 206-284-7805

The Vice President schedules programs, works closely with education chair to organize programs of interest to members, finds location for meetings, provides information to the newsletter, arranges payment to speakers, makes sure events run smoothly.

**Secretary** - Katherine Holznecht - [khartiste@hotmail.com](mailto:khartiste@hotmail.com) 425-481-7788  
Jean Tudor - [jeantudor@comcast.net](mailto:jeantudor@comcast.net) 253-445-1347

The Secretary records minutes at board meetings, requests electronic copies of committee reports to compile an accurate record of the NWDC business, writes a draft of minutes for approval of the board, writes a summary for the newsletter, the final version is sent out, printed and saved to a flashdrive for the archives.

### **Treasurer** - Loren Lukens -

[lpots@comcast.net](mailto:lpots@comcast.net) 206-935-6740

The treasurer collects & deposits dues, pays bills, keeps & reconciles the budget, presents regular financial reports to the board, prepares a yearly budget, completes tax and filing fee forms, is liason with investment management company, works with accountant when necessary.

### **Archivist** - **VACANT**

The Archivist acts as liason between NWDC & UW Pacific NW Special Collections Library, receives & stores submissions to NWDC archives, takes care of archival printing & binding of the NWDC newsletters, prepares and delivers any further NWDC submissions to the UW Pacific NW Special Collections Library.

**Education** - Lin Holley - [lin@palmstogether.net](mailto:lin@palmstogether.net) 206-322-7593

David Traylor - [studio@dirtcircus.com](mailto:studio@dirtcircus.com) 206-706-5901

The Education Chair arranges yearly programs, works with VP to secure locations, arranges AV equipment, makes sure the VP gets the publicity into the newsletter, works with Education Publicity Chair to publicize programs.

### **Publicity** - Trudee Hill -

[trudee@trudeehill.com](mailto:trudee@trudeehill.com) 310-908-6675

The Publicity Chair works with the exhibitions chair to publicize NWDC shows, organizes gallery / venue press releases at regional & national level, maintains a budget, communicates with members, maintains database of press release contacts, sets deadlines for when images are due for press, works with publishers on post cards, brochures, etc., proofs prepress, works with Education chair as necessary.

### **Membership** - **Vacant Jan. 2012** - Joline El-Hai -

[jblelhai@comcast.net](mailto:jblelhai@comcast.net) 206-354-8694

The Membership Chair processes new member applications, creates Powerpoint online ballot, tallies ballots and announces new members, advises applicants of result of jurying process, introduces new members at the Annual Membership Meeting, maintains current membership lists, emails NWDC information to members, develops communications materials regarding membership application.

### **Newsletter** - Jan Koutsky -

[jankoutsky@comcast.net](mailto:jankoutsky@comcast.net) 206-935-2306

The Newsletter Editor receives items from members by the 15th of the month, compiles the newsletter, sends a preview to board members for final editing, sends the final version to the Membership Chair for distribution to NWDC members.

### **Exhibitions** - Delores Taylor -

[delores@artglassconcepts.com](mailto:delores@artglassconcepts.com) 425-788-0817

The Exhibition Chair Secures NWDC exhibition opportunities, organizes and works with teams to ensure the logistics for exhibitions. Encourages member participation, maintains a well-rounded committee, attends board meetings, handles exhibition budgets, coordinates with publicity.

**Chefs continue on next page.....**



## .....Chefs continued from previous page

### Hospitality - Lois Harbaugh -

[lois.harbaugh@gmail.com](mailto:lois.harbaugh@gmail.com) 425-454-0098

The Hospitality Chair helps us with our parties by getting them organized, sends the information to the newsletter, and communicates with other members of the board as needed.

### Roster / Data Base - Vacant -

The Roster - Database Chair maintains current member list with contact information in a database and hard copy, updates all changes to individual records, supervises the creation of the annual 'Membership Directory'.

### Web Liason - Trudee Hill -

[trudee@trudeehill.com](mailto:trudee@trudeehill.com) 310-908-6675

The Website Liason receives from membership all updates for web site and works with web master to ensure the NWDC site is current, reviews bill from web developer and forwards to the treasurer, presents updated reports to the board, places periodic updates in the NWDC newsletter, works with committee chairs, updates content on site, occasionally asks for input from board & members to improve NWDC website.

**Socials** - Don Myhre - [donmyhre@mac.com](mailto:donmyhre@mac.com) 425-893-9444

**Image Bank** - Lanny Bergner - [lbergner@wavecable.com](mailto:lbergner@wavecable.com) 360-229-0514

# NWDC Needs Some Help!!

Please Think About What YOU Can do

Positions soon to be vacant / are vacant: Archivist, Vice President, Membership Chair, Roster / Database.  
Think about how you can help. Call or click a board member for more information.

### Are you enjoying the NWDC Newsletter? It could be better with two things:



Thing One: A proof reader. Jan needs someone to proof read the newsletter, right around the 26th or 27th of each month.



Thing Two: A GOOGLE CALENDAR person. The NWDC Board wants to try an interactive calendar. We have one set up on Google. We just need someone to enter the info. No need to come to any meeting! Just read the newsletter and plug in the dates.  
As easy as pie!

Interested? Please contact Jan Koutsky  
[jankoutsky@comcast.net](mailto:jankoutsky@comcast.net)



### From our NWDC Treasurer:

NWDC annual membership of \$50 are now due for 2012.

The fiscal year is now January 1st through December 31st, so keep your membership current by mailing a check, made out to NWDC, to:

Loren Lukens  
NWDC treasurer  
4208 SW 100St  
Seattle, WA 98146  
206 935-6740  
[llpots@comcast.net](mailto:llpots@comcast.net)

Museo  
Opening

<b>NOVEMBER</b>		1 "Touchable" Images Due  online voting	2  online voting	3 Tenenbaum@ Stonington 6-8pm  online voting	4  online voting	5 <b>See Page 5</b> <b>5-7pm</b>  online voting
6 Tenenbaum speaks@ Stonington 2pm online voting	7  online voting	8  online voting	9	<b>Nov. 9 Lars Husby at Phinney Com. Center 6-7 Board Meet 7 pm Members' meet Food &amp; non-alcoholic beverages welcome</b>		12  online voting
13  online voting	14  online voting	15 Deadline for next newsletter	16 Ron Ho's shop 5:30-8:30 see pg. 6			19
20	21	22	23	24	25	26
27	28	29	30			

<b>DECEMBER</b>				1	2	3
4	5	6	7	"High Fiber Diet" due at BAM	9	10 2:00 - 4:00 NWDC Potluck Holiday Party at David Chatt's
11	12	13	14	15 Deadline for Jan. newsletter	16 Deadline for wearable art jury	2007 NW 61st St. Seattle 98107. Bring a potluck dish
18	19	20	21	22	23	24
25	26	27	28	29	30	31