



Northwest Designer Craftsmen

www.nwdc-online.org

March 2012

Members' Only Site:

<https://sites.google.com/site/nwdesignercraftsmen>

Mark Your Calendars

Wed. March 14, 2012
5:30-7 board meeting
7-9 pm **Cameron Anne Mason**
Phinney Neighborhood Center
Community Hall

Wed. April 11, 2012
5:30-7 board meeting
7-9 pm **Margaret Ford**
Phinney Neighborhood Center
Community Hall

Sunday April 15, 2012 3-4pm
NWDC lecture series at BAM
Patty Warashina

Wed. May 9, 2012
5:30-7 board meeting
7-9 pm (being finalized)
Phinney Neighborhood Center
Community Hall

Wed. June 13, 2012
5:30-7 board meeting
7-9 pm **Mary Ann Peters**
Phinney Neighborhood Center
Community Hall

Sunday June 24, 2012 3-4pm
NWDC lecture series at BAM
Lloyd Herman
The Evolution of Craft



NWDC lecture series NCECA panelists at Bellevue Art Museum on Feb. 19
Shown from left to right - Bellevue Art's Museum Director of Curatorial Affairs/Artistic Director Stefano Catalani, arts professional Marge Levy, Wally Bivins, Director of Pottery Northwest, and UW professor Jamie Walker.



Cameron Anne Mason will be presenting her work at our monthly meeting @ the Phinney Community Center.

Wed. March 14 7pm.

Left: "Vessel Four" Silk Overlay, 2009

49.5 x 14.75 x 4.75 inches

<http://www.cameronannemason.com/about/>

Lanny Bergner's Show, "Mesh" at the Schack Art Center, Everett

by Posey (Rosette) Gault

Upon entering the gallery, the space opens up to a group of semi transparent mesh forms that could be jewels from necklaces worn by goddesses from some other world, or perhaps, is a collection of pendulum gathered from a timepiece of clockworks larger than life, or would be showcased in a curio cabinet in the museum of "mysterious objects". I stood in awe at the symmetry, the balance, and the illusion of infinite depth within each. A sense of mystery prevails. No matter how many different angles I viewed the works from, I enjoyed the process of gazing inside each. I know the center is there, like a bird in a cage, contained. There is an illusion of a sense of presence within each of these forms. Displayed and lit with care and thought, even the translucent shadows from the works were a treat. Does craft meet art or vice versa? Just wire mesh? How did Bergner accomplish this? In addition, there was a fascinating mural and many wall works of interest. Lanny also just completed a book documenting the show which is published at Blurb.com. The website link for catalog book is:

<http://www.blurb.com/bookstore/detail/2981111>



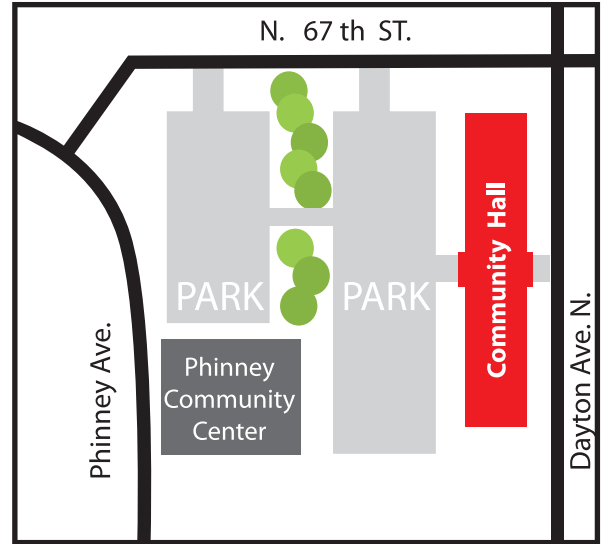
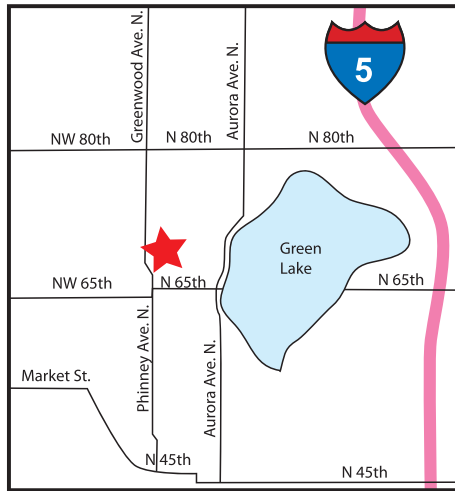
"Where we Come From" presented by Margaret Ford April 11, 7 pm, at the Phinney Community Center

Margaret will trace the development of ideas and themes in her own work, discussing sources and influences. Over a long career as an independent artist she has exhibited widely and her work is in numerous public and private collections. She has presented over 55 workshops and lectures and has held visiting-artist appointments including Ohio State University and Croydon College of Art and Design in England.



"At Sea" by Margaret Ford
low-fire clay with underglazes and glaze
14 1/2" x 16" x 6"

How to find the Phinney Community Hall for our monthly events



We are in the Community Hall

From Bellevue Arts Museum Education Curator Eileen Herbert, an invitation to participate in these two workshops by Mary Lee Hu

March 17, 2pm to 4pm

Mary Lee Hu Presents Knitted, Knotted, Twisted & Twined

Join us for an afternoon with Mary Lee Hu. The artist will provide a tour of her exquisite jewelry now on view at BAM. Immediately afterward, she will lecture on the evolution of her explorations using wire over the last 45 years. Space is limited. Please RSVP to either Tour, Lecture or select both.

Free with admission/Free for members.

2 - 3pm: Tour of Knitted, Knotted, Twisted & Twined

3 - 4pm: Lecture

Website link: <http://www.bellevuearts.org/calendar/#search-by=day&query=3/17/2012>

Saturday & Sunday, May 12 & 13, 9am to 4pm

Working with Wire: Workshop with Mary Lee Hu

Join BAM for a hands-on workshop with Seattle artist Mary Lee Hu. This rarely offered two-day workshop will give participants a look at the many ways one can use round wire in processes borrowed from the fields of basketry and fibers – twisting, wrapping, looping and complex braiding to make textured line, and weaving, soumak and twining to create a flat shape or hollow form. Participants will have the opportunity to make samples of several of the many processes demonstrated, rather than finished projects. A background and expertise in metals is not necessary and those with a fiber background may find that working with wires yields interesting possibilities. Ages 16 and up.

Register: <http://www.bellevuearts.org/images/buttons/register.jpg>. Space is limited. Deadline to register: April 28, 2012.

Website link: <http://www.bellevuearts.org/calendar/#search-by=day&query=5/12/2012>

President's Letter

From Our President Megan Corwin:

Our Image Bank and Lanny Bergner's art opening were two events that I will remember for a long time. Lanny's work is precise, ethereal and just plain beautiful. The members' work that we saw was impressive on so many levels. Not only was I moved by the professionalism of our members' art approach, I found the work new and inspiring. The Schack Art Center is stunning, with a wonderful open exhibition space and classrooms with instruction in glass blowing, bead making, drawing, encaustics, photography, printmaking, painting and many others. I am proud that NWDC awarded the Schack our first grant in support of a non-profit organization that furthers art in the community. In speaking with the staff on hand, we heard over and over again how much they love working there and how proud they are of the center and its approach to education and exhibition. I highly recommend you visit at any time, but especially now to see Lanny's show. (Editor's note: Lanny's show ended Feb. 26th.)

As always, our board meeting was informative and fun. Thank you Lin McJunkin, for joining us as co-secretary and taking such complete notes! We are all looking forward to the 60th exhibition. I encourage all of you to think about the direction of your work and what you would like to be doing in 2014. The education program will be expanding as we look for ways to reach out to our community with lectures and events such as workshops and informational gatherings.

Don't forget our Bellevue Arts Museum programs. They continue what we hope will be a special relationship with BAM. We have scheduled them on Sunday afternoons for your convenience. Come early and tour the museum; the exhibitions are fantastic. One of our long time members and world famous metalsmith, Mary Lee Hu, has a retrospective, which is up for viewing now. Mary's work is stunning and a must see for all our members.

Minutes for February 8, 2012 Board of Directors Meeting

At its February 8, 2012 meeting at the Schack Art Center in Everett, the NWDC Board of Directors discussed the following items: on-line voting for new members; deadlines for the newsletter; using 2012 Angel Funds on a first-come, first-served basis; motivating people to pay their dues on time; maximizing the use of our website, including using PayPal; finding a new vice-president and president, including ways to allow members from out of the area to apply; using social media; need for a grant writer and educational task force; upcoming shows and events at BAM, PNA, Maude Kerns, MoNA, NW Woodworking Gallery; Columbia City's interest in hosting us for a show; venues and titles for 60th anniversary show in 2014; David Chatt /Penland /scholarship opportunity; place for summer social; finding 2012 recipient of our \$1000 donation; and retreat topics from those listed above.

NWDC MEMBERS' NEWS



Lois Harbaugh's "dis(h)play"
at Grover Thurston Gallery
Porcelain, 36" tall x 9" wide x 8" deep

Lois Harbaugh will exhibit work in the following venues during NCECA:

SeaTac International Airport, Concourse C. Feb-June 2012

"Figurative Ceramics," Grover Thurston Gallery, 319 3rd Ave S., Seattle 98104
Opening: Feb 23. NCECA reception: March 27. Runs through March 31

"The Clay Edge," Northwest Woodworkers' Gallery, 2111 First Ave South, Seattle 98104 March 22 - April 22. NCECA reception: March 29, 5-9

"Tulipieres: the Tulip Vase Revisited," Museum of Northwest Art, La Conner, WA
March 24 - June 10. NCECA reception: March 24, 2-5

"Extreme, Extraordinary, & Exquisite: Teapots on the Edge,"
Bellevue College NCECA reception: March 28, 1-5 with Kamm Lecture: 2:30

"Platter Tectonics/Specific Rim," KAC Store, 336 Parkplace, Kirkland, WA.
March 3- April 1. NCECA reception: March 29.

Clay? IV Kirkland Arts Center Exhibition March 26 - May 19, 2012

Kirkland Arts Center is proud to present the fourth installment of its biennial contemporary ceramics exhibition, Clay? IV in conjunction with the National Council on Education for the Ceramic Arts' (NCECA) 46th annual conference in Seattle, Washington. Juried by University of Washington, School of Art Professors Doug Jeck, Jamie Walker, and Akio Takamori, Clay? IV explores the versatility of clay as a medium of expression. Showcasing a range of sizes, scales, subject matter, and techniques, the artwork of this exhibition is both a testament to the enduring legacy of clay and to the future of the field.

Lin Rebolini McJunkin will be showing two mounted fused glass tiles and one pate de verre sculpture in a group show,

"Shadows & Reflections"
University House Wallingford
4400 Stone Way N., Seattle.

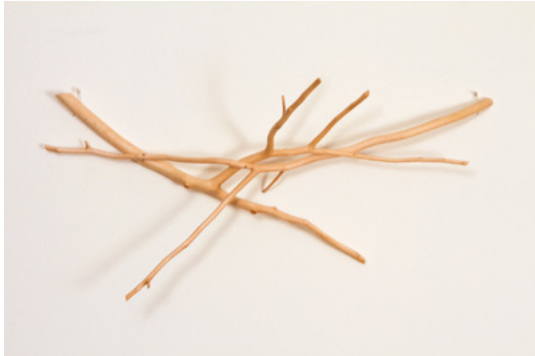
The show will be on display February 16 – June 10, 2012



Travel To Cuba with Lars Husby

Lars Husby has organized a tour to: CUBA: Art and Gardens with the Friends of the Conservatory, June 15-24, 2012. The tour is outlined on the Friends of the Volunteer Park Conservatory website. More info from Lars: lhusby@bellevuecollege.edu or call: 206-324-3209. There are only a few spaces left.

NWDC MEMBERS' NEWS



Denise M Snyder will be featured with Trish Harding in their show, "Nest" a collaboration of fiber sculpture and painting respectively.

March 2-31. Artist reception March 2, 5-7pm

Newport Visual Arts Center
777 NW. Beach Drive in Nye Beach
Newport, OR 97365
541-265-6569

"Minimalist Nest" by Denise Snyder, Peeled applewood: 23"W x 11"L x 8.5"D

HERE AND THERE: Contemporary American Ceramics opens at the Nordic Heritage Museum on Thursday, March 8, 6-8 PM and runs through the end of April with several NWDC members showing in another NCECA Exhibition.

CERAMICS AND PLANTS at the Volunteer Park Conservatory is another NCECA Exhibition that has a short run from March 27th to April 1st with several NWDC members showing their work.

Carol Milne will be part of a group exhibition of work combining clay & glass
March 1-31 st: "Earth & Fire: Materials & Methods" in the Pratt Gallery @
Tashiro Kaplan, 312 S. Washington St. , studio 1A .
Reception March 1st 5-8 pm
NCECA reception March 27th 5-8pm

Carol will also be part of "Hot Tea: 13th Biennial Teapot Exhibition" at the Craft Alliance in St. Louis, MO March 9 - April 26th.

At right: "Cock-a-doodle-doo", kiln cast lead crystal, 2011, 14" x 13" x 7"



"Aurlia Gouthroi" series, 14"h. x 26"w x 12"d, Terrecotta

Carol Gouthro will have works in several exhibitions and venues during the upcoming NCECA national ceramic conference

"Feet of Clay": Nordstrom window at 5th and Pine

"The Clay Edge": Northwest Woodworkers' Gallery, 2111 First Ave, Seattle, 98121, 206-625-0542

"A Great Place to Make Art": Seward Park Clay Studio Show : Seattle Design Center

Carol Gouthro , "Small Ceramic Sculpture" : Bellevue Art Museum Store

Kolvo /Sullivan Ceramic Collection : Seattle Convention Center

ArtScapes-Exploring the Edge between Art and Nature:Volunteer Park Conservatory

"Extreme, Extraordinary, & Exquisite": Teapots on the Edge: Bellevue College Gallery

"Clay 24/7": Seattle Art Museum Rental Gallery , 1220 Third Ave, Seattle , 98101 206 343-1101

The Potter and the Urn: Lundgren Monuments Boutique, 1011 Boren Ave, Seattle, 98104, 206-782-9077

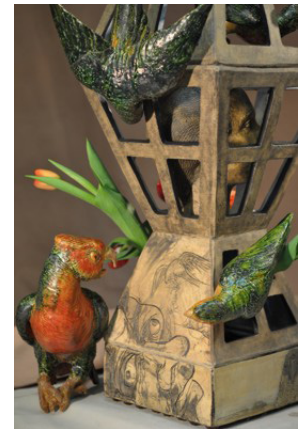
NWDC MEMBERS' NEWS



Lois Harbaugh "Say "Tulip"
26" h x 8" w x 8" d
mid-range fired clay
Photo credit: Richard Nicol



Liza Halvorsen - Riverbank Tulipiere, Ceramic: Cone 5, terra sigillata, underglaze and glaze. Boat filled with 8 individual flower vessels, and 'driftwood' stand. Size: 9" W x 10" W x 9" H.



Kathleen Skeels
'Death Cage Tulipiere'
24"X24"X72"
Stoneware, slips, under-
glazes, glaze, wax

Exhibition: Tulipieres : The Tulip Vase Revisited
Museum of Northwest Art
121 S. First St, LaConner, Washington 98257

Curated/Organized By: Carol Gouthro
Exhibition Dates: March 24- June 10, 2012
Opening :Saturday March 24 2-4 p.m.

"In 1637 Tulip Mania reached its peak in the Netherlands with tulip bulbs trading for astronomical prices. It was there in the 17th century in the Delft Potteries of the Netherlands that the tulip vase was born. Originally a 17th century Delft stacking form with multiple openings for displaying tulips. The Skagit Valley to the north of Seattle rivals Holland in its tulip growing fame and it is here at the Museum of Northwest Art in La Conner that ceramic artists will revisit this unique vessel form."

Tulipiers or Tulip Vases, as a form, present a unique challenge and creative opportunity for ceramists. Carol Gouthro, guest curator and ceramist, invited 32 Northwest ceramic artists to create Tulipiers in their own style.

Included in the exhibition are NWDC members Larry Halvorsen, Liza Halvorsen, Lois Harbaugh, Lars Husby, Loren Lukens, Peter Olsen, Kathleen Skeels, Ken Turner.



Loren Lukens
"Tulipiere on the Edge"
Stoneware, 40"x9",
Throw and assembled
Photo: Loren Lukens

NWDC MEMBERS' NEWS



Rosette Gault will be participating in many NCWCA events:

March 1-31 Nordstroms Flagship Store Window in connection with "Feet of Clay" Exhibition for NCECA

500 Pine Street, Seattle, WA 98101: Window facing Pine Street between 5th and 6th Avenues
Exhibit Case: "Small vs. Big", Seattle Airport Concourse A Near gate A1- and Childrens Play Area

Exhibit Case: Paperclay Scale Models for Large Scale Public Art Project at Seattle Pier Waterfront

and selection of Potter's Models for Domestic Paperclay Water Filter Prototypes- More Article in Ceramics, Art and Perception: Technical.

Long Report- 30pp available of my visions and report from Nicaragua trials-
rosette@rosettestudio.net

Studio Open: Wed. March 28, 2012, Clayworks Studio 218 Florentia St., Porcelain Demonstration 10-12, and 1-3 pm.

"The Clay Edge", Northwest Designer Craftsmen, March 22nd -April 22nd 2012

artist reception March 29th, 2012 5-9pm

Northwest Woodworkers Gallery

2111 First Ave. (between Lenora and Blanchard) Seattle WA 98121

There will be other events- www.rosettestudio.net will have updates.

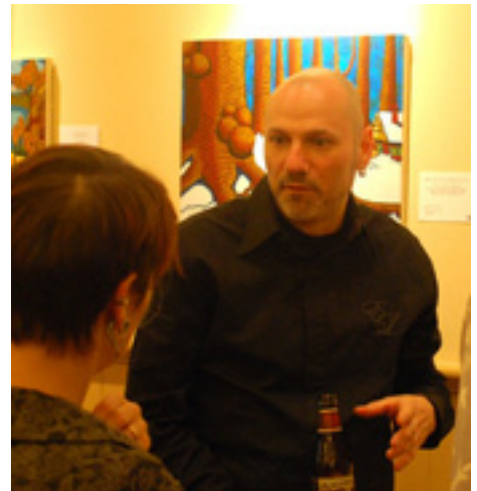
Business of Crafts Weekend Workshop March 17 & 18 in Edmonds

A comprehensive and fun two day workshop designed for artists and craftspeople new to selling their work or who have been selling on a small scale and are ready to take their business to the next level. Instructors Pamela Corwin and Manya Schiperoot (and a panel of artists and gallery owners) will provide students with tools and resources needed to start running one's business like a professional.

For more information: www.businessofcrafts.com or call (360) 357-3480 or e-mail info@businessofcrafts.com

Payment plans available.

CJ Hurley was awarded a 2011 Professional Development Grant from the Regional Arts and Culture Council. The grant helped to pay for the production of a DVD with the primary feature being a short documentary film about CJ and the evolution of his art. A sub-menu includes a public poetry reading, narrated by Author Susan Alexander Smith, of the poems CJ wrote to accompany the paintings in his solo exhibit, Houses, Landscapes, Flowers & Dreams: The Poetic Art of CJ Hurley. Also included are a one-hour artist's talk by CJ titled The Romantic Legacy [which gives an overview of the Romantic Movement and makes correlations between his work and that of the Romantics] and a photo gallery of his artwork spanning 20 years. After 6 busy months of filming and editing, the project is complete and will be screened at several events in Portland this spring. NWDC members will be invited to attend when dates are final



*In conjunction with the 46th Annual Conference
of the National Council on Education for the Ceramic Arts*

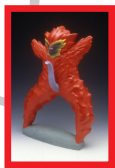
TEAPOTS: ELOQUENT, WORLDLY ARTFUL,

Weds., March 28, 2012
2:30 p.m.

a presentation by
**Sonny & Gloria
Kamm**



Bellevue College
Carlson Theater, Bldg E
Free Admission



The Kamms discuss their more than 17,000 piece teapot collection, their travelling Artful Teapot exhibit, and the future home for their collection at the Fuller Craft Museum. The couple has formed the largest collection of teapots in the U.S., including artist created teapots in all media, as well as an extensive component of antique teapots dating from the early 1700s.

This event is made possible in part with community support received through Bellevue College Foundation.



Bellevue College 3000 Landerholm Circle S.E., Bellevue, Washington 98007 1-90 at Eastgate, Exit 11 Hours & Directions: bellevuecollege.edu/artshum/galleryspace

presented by:
Bellevue College Gallery Space



In conjunction with
the 46th Annual Conference
of the National Council on Education
for the Ceramic Arts

**Bellevue College
Gallery Space
presents:**

Many
NWDC
Members
in this show



Extreme
Extraordinary
Exquisite

TEAPOTS ON THE EDGE

March 5 - April 5, 2012

OPENING RECEPTION:
Wednesday, March 28
1 - 5 p.m.
Gallery Space
Room D271



This event is made possible in part with community support received through Bellevue College Foundation.



CALL FOR ARTISTS:

The Peninsula Art League in Gig Harbor, WA. is holding our 10th Annual Open Art Exhibition, "Outside Your Comfort Zone". This art exhibition awards over \$3,100 in prizes. Our 2012 Juror is Rock Hushka, Curator, Tacoma Art Museum. We are accepting 2D and 3D art.

Exhibition dates: August 9 - Sept. 13, 2012

Deadline for entries is May 31, 2012

You may apply directly on line at: <http://www.onlinejuriedshows.com>

For more information contact Jeni Woock, jeniwoock@gmail.com

"The Clay Edge" March 20, 2012 to April 22, 2012

NWDC Ceramic Artists at the Northwest Woodworkers' Gallery

www.nwfinewoodworking.com

2111 1st Avenue

Seattle, WA 98104

206 625-0542



Store hours: Tuesday - Saturday 10:30 AM to 5:30 PM / Sunday 12- 5 PM Mondays- Closed

Opening of Show: March 20, 2012

Artist Reception March 29, 2012 5 pm-9pm (artist presence required)

De-installation April 22 or 23rd

Ongoing
NWDC
Shows

NWDC Show **"Touchable"** at the Maude Kerns Art Center

May 25, 2012 to June 29, 2012

<http://www.mkartcenter.org/>

191 East 15th Avenue

Eugene, OR 97403

(541) 345-1571

The inspiration for this show is work that is touchable, and will include sample pieces by each artist that can be "touched" by show visitors.

Delivery of Artwork: May 16, 2012 10am - 5pm

Opening of Show: May 25, 2012

Artist Reception May 25, 2012 5pm - 9pm

De-installation June 30, 2012 8am-finished

Gallery Hours: Monday to Friday: 10.00 AM - 5.30 PM, Saturday: 12.00 PM - 4.00 PM

Call For Entry

The NWDC at the Maude Kerns Gallery 2012

Supplemental Call for Artists

Background: The NWDC is scheduled to have a show at the Maude Kerns Art Center (<http://mkartcenter.org/>) in Eugene, Oregon during May 2012. It was originally developed around the theme “Touchable,” where each artist would create a piece for viewing, and a sample piece that can be touched by visitors to the show. On the basis of an earlier call, 15 NWDC artists were selected for Touchable.

Touchable will be shown as scheduled, but the gallery would like to make it part of a much larger (un-themed) show featuring the NWDC; this is the reason for a supplemental call for artists. Maude Kerns Gallery has space for up to about 100 pieces, and can accommodate all media, including cases for smaller pieces and jewelry.

Maude Kerns Art Center
191 East 15th Avenue
Eugene, OR 97403
(541) 345-1571

Submission Categories: All NWDC artists (2D and 3D) are invited to submit up to 3 works in one of two categories:

- Category 1. The un-themed show.
- Category 2. Touchable. This is a themed show. The inspiration for this show is work that is touchable, and will include one sample piece by each artist that can be “touched” by show visitors. Works previously accepted to Touchable should not be resubmitted.

Entry Requirements: Your application must be submitted on a CD by Mail. Please do not submit printed versions of your CV, etc. Images and other application materials are due **March 31, 2012**. Each entry must include:

1. Bio (one page)
2. Artist Statement (one pages)
3. CV or Artist Resumé (two pages)
4. Title Page:
 - Name of the Piece
 - Height, Width, Length of the work in inches or feet and inches
 - Date of Creation
 - Material/Media Information
 - Retail Value of the Piece
 - Display Info (Wall Mount, Pedestal Mount) and security needs artist requires.
5. Images.
 - Size: 300 dpi / 1024 pixels on the longest side
 - Number. 2 per piece
 - Label convention. Last name, name of piece.jpg. Example: Smith, Repo Man Never Sleeps.jpg
 - Provide list of photo credits

Mail CD To: Ron Pascho
15745 62nd Ave NE
Kenmore, WA 98028-4309
425-488-3404

Selection Process: Michael Fisher of the Maude Kerns Art Center will jury entries.

Notice of Acceptance: Mid-April, 2012

Important note on delivery of Artwork: Your artwork is to be delivered to the Maude Kerns Gallery on May 16, 2012, between 10 am and 5 pm. You may ship your work directly to the gallery, but remember that you also must include payment for return shipping. Please include installation instructions. Work is gallery-insured upon damage-free delivery to Maude Kerns Gallery.

Show: May 25 to June 29, 2012. De-installation: June 30, 2012 8am-finished

Artist Reception: May 25, 2012 5pm – 9pm

Gallery Commission: 35% Gallery and 65% Artist

UPDATE for the NWDC.ORG Website

Calling all members! Our NWDC.org web site needs some updating. Please submit high resolution, digital photographs of your work for the NWDC Website homepage slideshow. Images may be in .jpg or .tif format, at least 72dpi, and a minimum of 400 pixels tall or wide. These are minimum requirements. Feel free to send larger images which will be formatted accordingly.

If you would like to be included in one of the NWDC Member's Gallery pages, you are welcome to send a second image along with your artist statement (125 words or less), media, and personal website url. Please email your files directly to the Website Liaison, **Trudee Hill**: trudee@trudeehill.com Questions regarding digital image formatting, slides, etc. may be sent to Trudee as well. Thanks! - Trudee



Mission Statement

Northwest Designer Craftsmen (NWDC) was founded in 1954 to promote excellence of design and craftsmanship and to stimulate public appreciation and interest in fine craft. Artists in Washington, Oregon, Idaho, Montana and Alaska, who work professionally in clay, wood, glass, metal, fiber, and/or mixed media, are members.

Other members support the crafts in the Pacific Northwest as educators, managers of non-profit arts organizations, or buyers of art for public or private collections. Northwest Designer Craftsmen is a 501(c)3 non-profit organization.

What Does That "501 (C)3" Mean?

As our NWDC President Megan Corwin told us at the Annual Meeting at the Frye, the 501 (c)3 status refers to an educational component. We have described ourselves to be an organization that reaches out to the public and offers educational opportunities. Our monthly meetings at the Phinney & BAM are open to the public. We are excited to continue our relationship with BAM. "Thank you" to the education committee for continuing to produce these programs.

Another defining characteristic of a 501 (c) 3 is having a president and active board members. Our president will be leaving on December 31. It is imperative that our group find a replacement, or we will cease to exist. Please contact Megan if you are interested.

President - Megan Corwin - nmegan@mindspring.com 206-781-2646

The President presides over all meetings & conducts business, holds all documents of the group, leads the board, is alert to the membership and creates forums for discussions & goals, temporarily replaces board members who leave mid-term.

Megan would love to have an **Archivist** (who will work with our UW student to get NWDC items into the UW Library), and a **Roster Manager** (this does not take much time at all each month and does not require coming to any meetings).

Vice President - Interim - Rosette Gault - rosette@rosettestudio.net 206-284-7805

The Vice President schedules programs, works closely with education chair to organize programs of interest to members, finds location for meetings, provides information to the newsletter, arranges payment to speakers, makes sure events run smoothly.

Posey has graciously agreed to be our interim vice president until we can get someone permanent. It would be great if the VP could also take photos at events for publication in the monthly newsletter.

Secretary - Katherine Holznecht - khartiste@hotmail.com 425-481-7788

The Secretary records minutes at board meetings, requests electronic copies of committee reports to compile an accurate record of the NWDC business, writes a draft of minutes for approval of the board, writes a summary for the newsletter, the final version is sent out, printed and saved to a flashdrive for the archives.

Treasurer - Loren Lukens - llpots@comcast.net 206-935-6740

The treasurer collects & deposits dues, pays bills, keeps & reconciles the budget, presents regular financial reports to the board, prepares a yearly budget, completes tax and filing fee forms, is liaison with investment management company, works with accountant when necessary.

Archivist - VACANT The Archivist acts as liaison between NWDC & UW Pacific NW Special Collections Library, receives & stores submissions to NWDC archives, takes care of archival printing & binding of the NWDC newsletters, prepares and delivers any further NWDC submissions to the UW Pacific NW Special Collections Library.

Our 60th Anniversary Show is quickly approaching. We have to look good on paper when the Exhibitions Chair approaches museums to host our show. Our NWDC "packet" is in great need of some sprucing up. We need a good history, resume, mission statement, etc. We need someone to get all things NWDC organized. We have the information. We just need a few people to make it happen. The archivist will also submit our records to the UW library. We have a UW student who will work with us. Please!! Help!! Hurry!!

Education - Lin Holley - lin@palmstogether.net 206-322-7593 & **David Traylor** - studio@dirtcircus.com 206-706-5901

The Education Chair arranges yearly programs, works with VP to secure locations, arranges AV equipment, makes sure the VP gets the publicity into the newsletter, works with Education Publicity Chair to publicize programs.

Lin has done a wonderful job on our programs this year, hasn't she?! Isn't it great to have these programs happening? Have you ever thought, "Wouldn't it be great if..." Do you have ideas? Lin & David are interested. Please shoot Lin or David an e-mail with your ideas.

Exhibitions - Ron Pascho rpjh1@frontier.com 425-488-3404

The Exhibition Chair Secures NWDC exhibition opportunities, organizes and works with teams to ensure the logistics for exhibitions. Encourages member participation, maintains a well-rounded committee, attends board meetings, handles exhibition budgets, coordinates with publicity.

Ron is looking for ideas & venues for **future exhibitions**. Do you have ideas? Please contact him. Ron is also looking for a snappy **title for our 60th Anniversary** show ('zero to sixty' is already taken elsewhere). Please share ideas with him.

We are all thankful for our 60th Anniversary Show Focus Group: **Megan Corwin, Lloyd Herman, Leslie Campbell, Jill Nordfors Clark, Lynn Di Nino, Delores Taylor, and Larry Metcalf.**

Hospitality - Lois Harbaugh - lois.harbaugh@gmail.com 425-454-0098 & **Don Myhre** donmyhre@mac.com

The Hospitality Chair helps us with our parties by getting them organized, sends the information to the newsletter, and communicates with other members of the board as needed.

Lois would like 2 or 3 helpers to cycle through the various social events. She needs a helper at each event to simply replenish water, paper plates, etc. to make our parties run smoothly.

Membership - Joline El-Hai - jblelhai@comcast.net 206-354-8694

The Membership Chair processes new member applicants, creates Power Point online ballot, tallies ballots and announces new members, advises applicants of result of jurying process, introduces new members at the Annual Membership Meeting, maintains current membership lists, emails NWDC information to members, develops communications materials regarding membership application.

A new membership chair in one year. Joline will finish her time in January 2013. Anyone interested in training?

Newsletter - Jan Koutsky - jankoutsky@comcast.net 206-935-2306

Many "Thanks!" to our proofreaders: **Polly Adams Sutton, Ginny Conrow & Natalie Olsen** The Newsletter Editor receives items from members by the 15th of the month, compiles the newsletter, sends a preview to proofreaders for final editing, sends the final version to the Membership Chair for distribution to NWDC members.

Publicity - Tina Koyama - tina.k@juno.com 206-522-0794

The Publicity Chair works with the exhibitions chair to publicize NWDC shows, organizes gallery/venue press releases at regional & national level, maintains a budget, communicates with members, maintains database of press release contacts, sets deadlines for when images are due for press, works with publishers on post cards, brochures, etc., proofs prepress, works with Education chair as necessary.

Roster / Data Base - Vacant - The Roster - Database Chair maintains current member list with contact information in a database and hard copy, updates all changes to individual records, supervises the creation of the annual 'Membership Directory'.

Social Media - CJ Hurley - cj@cjhurley.com 503-234-4167

Thank You CJ!! We are fortunate to have CJ's expertise and help in our new 'social media' position. CJ will be getting NWDC into the spotlight via Facebook & Twitter.

How to submit information to the NWDC newsletter

The deadline is the 15th of the month for the next month's newsletter. What is appropriate to submit? Anything in your professional life you would like to share with NWDC members: exhibits, awards, classes, art or studio sales, studio space, opportunities, call for entries, etc. Be sure to include all the information: who, what, when, where & why.

How should it be formatted? Please send your information in plain text, either in an attached "Word" document, or in the body of an e-mail. The newsletter editor will copy / paste. Please, do NOT send your text in PDF files or jpeg copies of gallery post cards! The newsletter editor cannot copy / paste text from PDFs and JPEGs.

What about Images? We want images! They need to be in jpeg format, 72 dpi, about 400 pixels on the longest side. Please include name, title, medium, dimensions, etc. Website addresses are great too.

The deadline is the 15th of the month. Send to Jan Koutsky: jankoutsky@comcast.net

Please put "NWDC Newsletter" in the subject line.

March 2012

				1	2	3
4	5	6	7	8	9	10
11	12	13	14	15	16	March 24th Opening at NW Museum of Art LaConner, 2-5pm
18	19	20	21	6pm Board Meeting 7 pm Cameron Mason Phinney Community Center	23	24
25	26	27	28	29	30	31
				March 29th Opening Reception Clay Edge 5-9pm		March 31st Deadline for 2nd Maude Kerns show see page 12

Coming Soon!!

Our website: NWDC-online.org will soon have a **calendar of events**. Trudee Hill is setting it up. In future newsletters, there will be a link to the site instead of this version of the calendar. Watch for an announcement soon. Thank You Trudee!

Coming Soon....

NWDC has paired with Contemporary Quilt Arts to produce an instructional CD on Digital Photography and how to photograph your art. The CD will include information on purchasing a camera, setting up lights, pros & cons of lighting situations and how to work with digital files to improve the quality of your final photographs. This instructional CD is being produced by Craig Ingles, with the cost being split between the two groups. Craig is finishing up his work. NWDC member **Ginny Conrow** is helping with proof reading. When the content is finished, the next phase will be to get CDs reproduced and distributed. Watch for more information soon.