

February 2016



# Northwest Designer Craftsmen

[www.nwdc-online.org](http://www.nwdc-online.org)

Facebook: <https://www.facebook.com/pages/Northwest-Designer-Craftsmen-NWDC/355877767779930?sk=wall>

NWDC online calendar: <http://www.nwdc-online.org/calendar/>

Members' Only Site: <https://sites.google.com/site/nwdesignercraftsmen>

## Meetings and Speakers



### Phinney Neighborhood Center Program:

2nd Wed. of the month

Board meetings 5:30-7 (open to everyone)

Speaker 7-8 pm / Social Time 8-9 pm

Phinney Neighborhood Center location:

6532 Phinney Ave N, Seattle, WA 98103, in the lower (east) building basement

- |          |                                     |
|----------|-------------------------------------|
| Feb 10   | Art and the Living Wage Panel 7-9pm |
| March 9  | Slide Bank "Show and Tell"          |
| April 13 | Stewart Wong (ceramics)             |
| May 11   | Loren Lukens (ceramics)             |
| June 8   | Julia Haack (wood sculpture)        |

Our Annual Slide Bank "Show and Tell" presentation will be at our monthly meeting on March 9, 2016. Members send 5 slides of a designated size to our Slide Bank Coordinator, who then puts them into a Powerpoint slide show that the members narrate themselves. Typically, around 15 – 20 members participate each year. This project takes around 3-4 hours and you can do it all from home! You can run it at the meeting or someone else will do that for us, your choice.

Larkin Van Horn has volunteered to handle the upcoming slide presentation, we can still use someone to fill this position for the longer term.

## Art and the Living Wage

### NWDC Panel Discussion

Phinney Neighborhood Center


February 10, 7-9pm

Galleries, art fairs, installations, online sales - ever wondered how your fellow artists are putting all the pieces together to make a living from their artwork?

Is there a sales venue you'd like to know more about?

February's program will begin with five artists speaking about their careers. They will talk about the ways they market and sell their work to make a living wage either wholly or in part from their artwork. This will be followed by group discussion and Q & A.

It should be a lively time!



**FED UP?**  
with your present job? ...  
your pay? ... your future?

**"HERE'S MY SUCCESS SECRET ...**  
**I studied ART**  
**at home—**  
**SO CAN YOU!"**  
**says ALBERT DORNE,**  
one of America's highest-paid illustrators

### Bouquets to Weston



While NWDC did not give Weston Nishimura this bouquet, he deserves a huge bouquet of thanks from NWDC. For more than a few years, Weston has been a dedicated photographer of NWDC events and meetings. His excellent photographs allowed NWDC to share the good times throughout the organization with a photographic archive of our events. Thank you Weston for being incredibly supportive of NWDC and of your spouse, past President Lois Harbaugh.



Weston and Lois at the annual meeting.

### Volunteerism Increases Several Percentage Points

NWDC volunteers include officers, members of the Board, committee chairs and committee members, and all of the members who help out whenever they can. At the start of 2015 (though no official record was kept), we estimate that about 15% of our members were volunteering. Many of our volunteers were doing multiple tasks and feeling close to burn-out. In September, Patricia Resseguie took on the role of Volunteer Coordinator. She defined her role as clearly identifying tasks, getting the word out, and finding members to volunteer. By the end of 2015, just over 28% of our membership (and their spouses) volunteered and participated in the ongoing vitality of NWDC. We were even able to find volunteer opportunities for members living outside the Seattle metro area and outside of the state. It is great forward momentum!

We'd like to increase volunteerism by at least another 10 percentage points in 2016. We are off to a great start. And you can help. It takes volunteering only a few hours once a year. Please open, read and respond to emails from [nwdcvolunteers@gmail.com](mailto:nwdcvolunteers@gmail.com). Opportunities will be posted in the NWDC newsletter and in a volunteer newsletter available at meetings and events. Suggest how you want to help or how we can make it easier to volunteer.

### Thank You to SLU Volunteers

Our thanks go out to the many volunteers who stepped forward to pack up the art work from the exhibition at UW Medicine SLU and who dismantled and returned the display cases. It was tough duty and we appreciate it. Thanks go to Mark Ditzler, Rosette Gault, Larry Halvorsen, Joan Hammond, Cecil Hayes, Joyce Hayes, Jan Koutsky, Julia Lowther, Julia Rapinoe, and Polly Sutton.

And thank you to Larkin Jean Van Horn who volunteered to put together the slide presentation for our annual Show and Tell in March. The Show and Tell is a popular program with our members and the show will go on!

## Presidents' Messages

### Letters from the Presidents Julia Lowther and Lin McJunkin

#### Julia says:

I am extremely fortunate that the lovely and talented Lin McJunkin offered to be my Co-President. She brings to our dynamic duo her immensely valuable years of work with the NWDC board and membership, and I get to do a happy-dance and take advantage of both her wealth of historical knowledge and her wisdom. Plus she's delightful, and I have been enjoying getting to know her better as we wait in the wings, preparing to sweep into the presidential limelight.

Meanwhile, my new and temporary role as co-president-in-waiting has also led me into some fun and fascinating conversations with other NWDC members who are volunteering in one capacity or another. Selfishly, one of my primary reasons for accepting nomination to the NWDC board is to have real discussions with my artist peeps, to change acquaintances into friends and to oil the gears in my head with thoughtful discussion of provocatively different points of view. I am very pleased to report that this is already working brilliantly! Gummy brain-cogs are moving more freely, and the braid of NWDC members I call friends is already thicker.

My other major reason for joining the board is that there are things I want to learn about, and I know that the best way to light a fire under myself is to create deadlines I must meet. If I say, "Let's work on this!" and the rest of the NWDC board says "Yes!", then deadlines will appear and I'll have to adhere to them, and so NWDC wins and I win, too. Ta-da!

#### Lin says:

I have enjoyed serving on the NWDC Board of Directors for the last 4 years as Membership Chair. Every Board member has been most helpful and welcoming. And it's been very satisfying to learn how to shepherd new applicants through the process of becoming active new members. I'd like to thank all the other volunteers who helped update and streamline that process, especially our web liaison Trudy Hill and past Chair Joline El-Hai.

And now I am thrilled to have the opportunity to work with the ever-enthusiastic and creative Julia Lowther in a position we are piloting – that of Co-presidents. Lois Harbaugh led NWDC so admirably these last 3 years it might just take the two of us to come anywhere near her high standards of achievement! We appreciate all the updates she made and the groundwork she laid for us. We plan to employ skillful, efficient and joyful collaborative opportunity-creating, problem-solving and decision-making processes (and maybe wear out the dashes on our computer keyboards.)

Some of the intriguing potential plans include finding new exhibition venues in our 4 neighboring states with the help of in-state Exhibition Co-chairs, establishing a mentoring and scholarship program for emerging and evolving artists, adding on-line classes and sales opportunities, sharing with Instagram, converting our Living Treasures DVDs to YouTube, and facilitating other projects that our members bring to the Board. Phew!

Thanks to our newly self-appointed Volunteer Chair, Patricia Ressiguie, we are relishing an explosion in the number of volunteers who are stepping up to help us expand the offerings that keep this a vibrant and dynamic organization of skillful and imaginative individuals. I know many of you will step up to help implement our new agenda and I look forward to a creative and productive new year for us all!

## Outgoing President Lois Harbaugh's Message

My final President's letter is a love letter to NWDC. I love belonging to this organization and I have loved serving as its President. To me, it has meant connection: connection to artists I admire, connection to Legacy, connection to a Future we are creating together.

I have sought, in good times and in times of trouble, to hold up an appreciative mirror to NWDC. Ken Turner expressed it succinctly in the 60th catalog: "I am still in awe of the individual and collective talent of this group..."

Awed, indeed! I love that we celebrate members' successes -- that individuals' accomplishments lend honor to NWDC. This appreciative camaraderie restores some sanity and humanity to the art world. It gives context to our efforts of exploration, innovation, pursuit of quality, and to our successes. Each newsletter's listing of members' exhibitions is a joy -- and I know many accomplishments go unreported. Please share. Seeing intelligent, beautiful work gives us all energy!

I am awed as well by the generous service offered to NWDC by members. Our board has been incredibly competent, committed, and congenial; our members continually step up for all variety of tasks. During my Presidency, so many of those tasks involved time-intensive technological change. (See the next page for a listing of tech up-grades and the volunteers who initiated them. What a mountain of work got done!)

I am thankful for the ambitious events that occurred during my tenure. NWDC's 60th Anniversary exhibit was already planned and I inherited its execution. The jurying of the show caused pain. NWDC suffered; we persevered as best we could. We were able to make an inclusive and elegant catalog -- Thank you Ron Pascho-- and to have a magnificent party at a non-member's house. (Thank you, Weston Nishimura, for inviting Vicki Holland to host NWDC.) The Whatcom Museum exhibit turned out to be beautiful. (Thank you, Larry Metcalf, for your work on its design.) The board's decision to honor Larry Metcalf with a Lifetime Achievement Award was a good one: it turned what could have been an amorphous, hard-to-grasp anniversary into a focused event with a concrete sense of history. Founder Russell Day and his wife, Marjorie were present at the Festivities. Larry created a graphic photo display of the Founders' work for the show's entry way and Larry's own life-involvement with NWDC spanned the gap from NWDC's early days to the present. We honored Larry at both the party and the Museum reception; and featured his work with an interview in the catalog. (Thank you, Lynn Di Nino, for interviewing.)

The 60th Anniversary show was followed by an ambitious, smartly-themed show, "Tangible Evidence" at a good venue, the Schack Art Center in Everett.

A third ambitious event was honoring Lloyd Herman with an Honorary Member Lifetime Achievement Award at the 2015 Summer Social. Joan Hammond's home and garden provided a tranquil setting, while Honorary Member Michael Monroe gave us the inside scoop on Lloyd's visionary founding of the Renwick Gallery at the Smithsonian. Awed, indeed, at this ringside account of history and the impactful individuals who walk among us in NWDC. Awed also at the possibility and power of good ideas. (Thank you, Joan Hammond, Lloyd Herman, Michael Monroe, and all the event speakers. Thank you Brian O'Neill for making the award real by putting images and text about it on NWDC's websites.)

(continued next page)

A fourth ambitious endeavor was mounting a large exhibit this past fall at the UW Medical Buildings in South Lake Union. (Thank you, Gale Lurie, for making this connection.) This research facility in Seattle's new tech zone was an opportunity to show in an upscale corporate setting. Our best laid plans of an exhibit co-designed by Larry Metcalf did not come to fruition. Nonetheless, I was proud of the exhibit SLU provided and of having NWDC's artwork in that setting. (Thank you, Joyce Hayes, for tireless dedication.) And we received rare, rave reviews from top scientists. SLU provided a catered reception. I was out of town, but heard that it was a convivial, gratifying reception with moving acknowledgements.

Logistical arrangements led to NWDC deciding to cancel the second show at SLU. Losing the possibility of a Metcalf-designed show in a glossy venue: heart-breaking for me at the end of my Presidency. Wise, nonetheless, and relations with SLU remain cordial. Perhaps NWDC can find another way to be part of this burgeoning tech core.

I'm proud that NWDC has continued its tradition of hospitality. For me, parties are a defining part of the NWDC brand. Each of our Summer Socials, Winter Holiday Socials, Annual Meetings, and Board Retreats was unique and a highlight of the year. (Thank you, Cameron Anne Mason, Danielle Bodine, Inge Roberts, Loren Lukens, Crista Matteson, Stewart Wong, Ron Adams, Leo Adams, Peter Olsen, Vicki Holland, Danielle Bodine (again), Joan Hammond, and Dick Weiss.) Every party was extraordinary and strengthened our esprit de corps.

Likewise, our monthly meetings where a member presents his/her life/work are amazingly intimate. Members share with great generosity and we come away enriched. (Thank you, Lin Holley, for initiating this brilliant program before my term and continuing to run it.)

NWDC continues to explore ways to expand our relationship with Bellevue Arts Museum. (Thank you, Museum Liaison Eva Funderburgh and Layne Goldsmith.) We are so lucky to have this first class craft museum in our area. We were pleased to have BAM Director Stefano Catalani maintain tradition and become an Honorary Member of NWDC. Connecting with BAM supports our mission of promoting quality in crafts. Thank you, Layne, for spearheading the Evening with Kay Sekimachi at BAM, an ambitious event with an ingenious triangulation of support from the UW, NWDC, and BAM.

NWDC has strong connective communication thanks to a beautiful and complete monthly newsletter (Thank you, Jan Koutsky and Denise Snyder) and a reliable e-mail blast system (Thank you, Annette Tamm). Facebook Business Page and Facebook Group present our face to the world and to each other, respectively. (Thank you, CJ Hurley, Julie Conway, Nia Michaels and Barbara de Pirro.)

My lists could go on ..they can never be complete — there's just too much to mention. My purpose has been to show the health and resilience of NWDC. We are a juried, multi-craft organization. There aren't many such associations. Our members are independent-minded souls who listen to their inner voices (who else could pursue a life in craft?) with deep affection for each other and the organization's mission of promoting quality in craft. As an organization, we have continuously regenerated ourselves out of the resourcefulness of the NWDC boards and our volunteers. (Thank you, Patricia Ressaquie, for inventing the volunteer co-ordinator position.) Now once again we have faced our Achilles' heel of board transition, and come out with the executive team of Julia Lowther and Lin McJunkin. I will leave it to them to present the many splendid directions available for NWDC's growth and development. Julia and Lin will do a brilliant job. I depart feeling very rewarded that I got to inhabit this role as President of such a wonderful organization.

Lois Harbaugh

## Tech Updates Post from Lois

Throughout my three year tenure as president, members stepped up to help NWDC with this culture's changing technology.

For our 60th anniversary show, Ron Pasco ushered in NWDC's first online application for an exhibition. Jan Koutsky helped members cope. This year, exhibition co-chair Joyce Hayes made online jurying an in-house endeavor with an entry application on the NWDC website.

Membership chair Lin McJunkin put membership jurying online: using Survey Monkey the first year; Dropbox combined with Survey Monkey the next.

Barbara and CJ Hurley created a business Facebook page for NWDC the first year of my presidency. Julie Conway joined forces with the Hurleys on Facebook the next year. Nia Michaels and Barbara DePirro spearheaded a group Facebook page this year.

Trudee Hill has long handled the continual update of our website. This year, Eva Funderburgh designed a new website (designed in-house for the first time.) Brian O'Neill designed NWDC Lifetime Awards pages on both websites.

Loren Lukens made membership dues payable on Pay Pal.

Katherine Holzkecht and Loren Lukens updated NWDC's book-keeping on Quickbooks.

Jan Koutsky and Denise Snyder created beautiful e-newsletters that are comprehensive and archived at the University of Washington and at American Craft's library in Minneapolis.

All these changes were initiated by volunteers. They saw the need for change and embarked on the labor-intensive effort to keep NWDC current.

We also updated equipment.

Joan Hammond researched and purchased a new digital projector and a new computer.

Katherine Holzkecht bought a designated computer for the NWDC Treasury.

Lois Harbaugh bought a microphone and speaker system for our parties.

## Who We Honored:

Marge Levy became an Honorary Member.

Stefano Catalani became an Honorary Member.

Lynn Di Nino became a Lifetime Member.

Larry Metcalf received the NWDC Lifetime Achievement Award.

Lloyd Herman received the Honorary Member Lifetime Achievement Award.

Deb Schwartzkopf was toasted for being on the cover of American Craft.

# NWDC Annual Meeting At the Brightwater Center



Outgoing President Lois Harbaugh with Ellen Sollod glass installa-



NWDC 2016 Annual Meeting Group Photo



Outgoing Board Lois Harbaugh, Patricia Resseguie, KatherineHolznecht, Loren Lukens, Joan Hammond, Lin McJunkin.



Incoming Board Liza Halverson, Julie Lowther, Lin McJunkin, Mary Hosick.



Julie Conway and Eva Funderburgh



New Member Naoka Morisawa showing her work.



New Member Nancy Looreem



Ron Pasco, Nancy Looreem, Gene Anderson



## Volunteer Opportunities for You

**Meeting Hospitality (1-5 volunteers needed):** Provide snacks, hot water and coffee during the regular NWDC monthly meetings February through June of 2016. Choose one meeting at a time or all five meetings. Snacks usually include cookies and a gluten free option of fruit or nuts. NWDC owns air pots to hold coffee and hot water. NWDC provides napkins and tea bags. Dates: Feb to June, 2016. Duration: Prep and meeting time.

**Meeting Photographer (1 to 2 volunteers needed):** Take member photographs at our regular meetings Feb 10 and/or March 9. Volunteer for one or both. You can use a camera or your phone. It is a terrific way to get to know members attending the meeting. Edit and label photos for Website pages, the newsletter and the Facebook page. Dates: Feb 10 and/or March 9. Duration: 2-3 hours each event.

**Membership Chair (1 volunteer needed):** Work with applicants for NWDC membership from application through the voting process. Help current NWDC members review applications and submit their votes. This is one of the best documented jobs within NWDC. Contact [nwdevolunteers@gmail.com](mailto:nwdevolunteers@gmail.com) for a full job description. The current chair, Lin McJunkin, has worked three years to iron out the process so that it runs smoothly. And we'll help you get additional volunteers to do specific tasks. Dates: Sept 2016 through early Jan 2017. This job requires attendance in person or via Skype at Board meetings in Sept, Oct, Nov and Dec plus several hours of management.

**Hospitality Chair (1 volunteer needed):** Coordinate all logistics for the Summer and Winter Socials. Don't worry. We will help you find volunteers to do much of the work. Your job is to make it happen! Date: July-Aug, 2016 and Nov – Dec, 2016. Volunteer for one or both events. Duration: Estimated 10-20 hours for each Social.

**Assistant to Volunteer Coordinator (1 volunteer needed):** Help the Volunteer Coordinator brainstorm ideas to encourage NWDC members to volunteer. Help with the newsletter and email blasts to advertise volunteer positions. Dates: Throughout 2016. Duration: 0 to 2 hours per month.

### Annual Meeting Volunteers

Many hands made light work at the Annual Meeting. Deep thanks to Lois Harbaugh, outgoing president, for managing the logistics for the meeting from working with the Brightwater Center to making arrangements for refreshments. Katherine Holznecht, Denise Synder, Brian O'Neill, Lin McJunkin, Don Myhre, Marguerite Goff and Patricia Resseguie arrived early to set up. Eva Funderburgh did a great job with electronic images for our new member presentations. Robert Beishline documented it all in photos (with one last supporting photo by Weston). And just about everybody in the room helped to pick up chairs and gather dirty cups and dispose of trash at the end of the meeting. It was a tremendous team effort.

Deep thanks also goes to our members who generously donated pieces of their art as gifts to outgoing officers and committee chairs. These are remembrances that will be treasured by the recipients. Our donating members are: Brian O'Neill, Candy Anderson, Sharrey Dore, Larkin Jean Van Horn, Dale Reiger, and Julie Conway.

## Lois Remembers Our Annual Meeting

Thanks to everyone for making our Annual Meeting a lovely event. I felt pleased with my send-off and my husband commented that there's lots of energy in the new group. Well said!

Thanks, Katherine, for championing this venue. (That glass piece by Ellen Sollod — so glad I saw it!) Loren was so impressed — He mused about holding regular meetings there. ( More of a drive for the Seattle crowd though.)

Thank you, new Presidents, for your lovely presence on stage. Thank you, Lin, for MC-ing, and spearheading the gift giving. Thanks, Julia, for sharing about the video possibility.

Thanks to all who made gifts — they were impressive! Thank you, Brian, for my piece. I will enjoy anticipating the new version.

Thanks, Lin, for remembering my husband with a plaque from Candy Anderson.

Thank you, Eva, for previewing the site with me.

Thank you, Eva, for preparing the imagery and doing all the tech stuff.

Thank you, Eva, for presenting the new web site — it was marvelous and that craft category feature did impress me!

Thanks, Rob, for photographing and sending it to the newsletter.

Thank you to Katherine, Eva, and Don for committing early to be helpers. (providing peace of mind!)

Thanks, Don, for setting up & making the drink area look good (as thanks for all those years of practice!)

Thank you to the crew from the north: cake-cutter Marguerite Goff and coffee rescuer Brian O'Neill and Lin & Patricia & Denise: room arrangers, cup wallahs, chair movers and table assemblers.

Thanks, Loren, for the treasurer's report. It was just what we wanted to hear: short & very clear.

Thanks, Patricia, for the volunteer oomph.

Thanks, Julie, for the clear Facebook explanation. (You could do that again at other meetings.)

Thanks, Liza, for writing about the Annual Meeting for the newsletter — already on the job!

Thanks, Mary, for your part in the treasurer's report & for coming all the way from Vashon.

I think it was fulfilling for those who attended. It's always stimulating to be in a great environment. And everyone hustled together to get things in place. Very rewarding.

Thank you for creating the day with your presence and energy! —Lois

PS: Just a warm-up for your extravaganza coming up in February!

PPS: I caught wind of an idea (you probably heard it too) that was circulating around: NWDC & Instagram.

## Member News

### *Beyond the Surface Show*

NWDC members Danielle Bodine, Zia Gipson, Patti King, Nancy Loorem Adams, Natalie Olsen, and Larkin Van Horn will be exhibiting their artwork in "Beyond the Surface" an exhibit of works in fiber art by artists from Whidbey Island Surface Design. The show runs January 4 through March 27, 2016 at the La Conner Quilt & Textile Museum.

La Conner Quilt & Textile Museum  
703 South Second Street  
La Conner, WA  
(360) 466-4288  
<http://www.laconnerquilts.org/beyond-the-surface.html>



Zia Gipson  
*Criss Cross*  
24"H x 20.5"W  
Description: Materials are long fiber paper and cord mounted on silk background. Process is joomchi (Korean 'felted' paper)



Danielle Bodine  
*Autumn Stroll*  
38"Hx7"Wx3"D  
Cast mulberry papers, collaged, waxed linen, bamboo cane, bamboo, beads

Natalie Olsen  
*Bug Dream*  
14" X 11"  
Materials: Dried flowers & petals, silk fusion on wool background  
Technique: hand-felted silk, dyed wool



Patti King  
*Refuge*  
30"x31"  
Ramie, hemp, silk organza, wysteria, sewing thread.



Nancy Loorem Adams  
*Random Order III*  
10Hx9"Wx9"D  
Random woven dyed cane, and paper clay with pigment, composite gold-leaf, and lacquer.



Larkin Jean Van Horn  
*The Mentor*  
12"h x 7"w x 4"d plus doll  
Mixed-media textile

## Member News

### The Nature of Form and Color Moved with Sound

February 5, 7-9pm    Hatch 2.0 Space    221 Prospect St    Bellingham, WA

#### Form



#### Color



#### Sound



### Experience the Moment

In a two hour performance a painter, a sculptor and musicians create together with no rehearsal or script. Friday, February 5, from 7 – 9 PM artists Denise Snyder, Mary Jo Maute and five accomplished musicians take over the Hatch 2.0 Space at 221 Prospect Street for an art/music performance. The musician lineup is Steve Jones - percussion, John Butorac - percussion, Roger Yamashita - upright bass, Julianne Thoma - piano, Kevin Woods - trumpet. The performance is in conjunction with *Elevation, The Art of Cascadia*.

NWDC member Denise Snyder is a part of a creative venture of improvisation with a group of musicians and an impressionist painter. Denise will be building one of her wood branch sculptures as the painter Mary Jo Maute captures the scene on canvas. The musicians, all skilled and nuanced, will complete the experience.

Free to the Public

[denise@dsnyder-artist.com](mailto:denise@dsnyder-artist.com)

## New Member News

Now that the 2015 New Member Application Process has been completed with their introduction at our Annual Membership Meeting in January, I want to thank all the volunteers who made this such a smooth process for the applicants and voters, especially:

Website Liaison – Trudee Hill

Volunteer Procurer – Patricia Ressiguie

Screening Committee and Website Testers– Zia Gipson, Sally Sellers

Internet Usage Advisors – Jan Koutsky, Lois James

Media Advisors – Dorothy McGuinness, Katherine Lewis, Steph Mader, Julia Haack

Results Sharing – Diane Gale, Annette Tamm, Denise Snyder, Eva Funderburgh

Flyer and Certificates – Candy Anderson

Nametags – Katherine Holzkecht

Gift procurer for Retiring Board – Teri Jo Summer-Reiger

Gift providers – Brian O’Neill, Larkin Van Horn, Julie Conway, Teri Jo Summer-Reiger, Dale Reiger, Sharrey Dore’

Meeting Announcer – Rob Beishline

Several of these volunteers are from outside the Seattle area and really welcomed being able to contribute to this process from their homes. Thank you so much to everyone and please let me know if I overlooked anyone.

As you can see, over 2 dozen people already know how to perform these jobs very well, so the new Membership Chair will have a smooth transition into his or her job. I found this to be a really fun and rewarding job and I look forward to hearing from our next Volunteer Membership Chair- could it be YOU????!! Please contact me at 360-941-6742 [lin@mcjunkinglass.com](mailto:lin@mcjunkinglass.com) for more info.

Thanks so much, Lin McJunkin, retiring Membership Chair

### An Interesting Coincidence, Good Company With NWDC

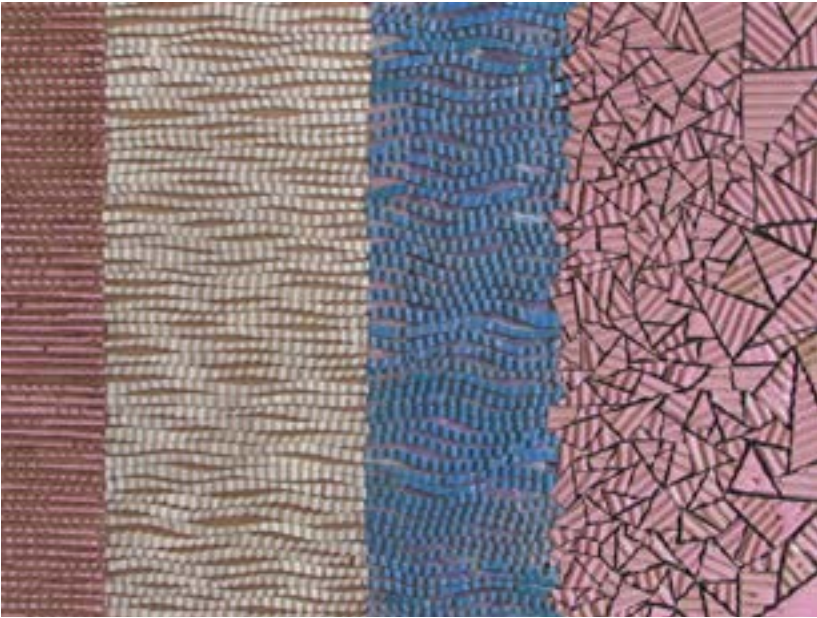
I recently made a sale of a piece of art and when I went to the client’s home to install I was pleased to see the artwork of two other NWDC members in this home. Brian O’Neill’s pottery is on the table and Patricia Resseguie three small framed pieces are hung vertically above. My work is the branched piece. This showed me once again what a strong group of artists that we have in our group and how happy that I am to be a part of it.

Denise Snyder, NWDC editor



## Members News

### Shows Featuring New Member Naoko Morisawa



Studio Visit Magazine 2016  
Summer Edition, selected  
*WAVE XVI - NEW WAVE II*  
Cardboard Mosaics 2015  
24x18inch

Group Exhibition at Potter Art Gallery, St. Joseph,  
Missouri State, USA Jan-Feb

Seattle Center Temp. Public Art Project at Poet  
Garden, May- July 2016 Tube mosaic art to install

Artist Trust Benefit Art Juried Auction 2016,  
Feb.27th, Fisher Pavillion- Seattle Center, WA.

<http://www.artisttrustauction.org/>

[http://www.artisttrustauction.org/art-preview/#/  
art-preview/artwork/](http://www.artisttrustauction.org/art-preview/#/art-preview/artwork/)

[www.naokomorisawa.com](http://www.naokomorisawa.com)



Macy's New Seattle Gallery (Two Person Show), 4th x Paine, Seattle, WA Jan -Feb with Esther Ervin  
Opening Reception: Feb. 18, 6:30-8:30 pm

Members News

Denise Snyder's Artwork is showing at Vinostrology Wine Bar in Bellingham, WA

January- February 2016



*Coming Together*, peeled birch



*Holding Empty Space*, peeled hazelnut, willow, and maple



*Moving Out*, peeled lilac

**New opportunities for NWDC members to promote their work and interact within the group!** NWDC members have been busy arranging for some wonderful opportunities for us all. Please take advantage of the two sites listed here.

## Our new “members only” facebook page:

As most of you know, NWDC currently has a business page on Facebook. This is curated and administered by Julie Conway and CJ Hurley. The Board has decided to move forward to create an additional Facebook page that is for NWDC members ONLY. The goal of this page is to build community engagement.

Once you have been added to the group, you may post about your upcoming shows, you may post about needing a ride to a meeting or ask a question about a technique or post a tip...whatever you feel is relevant and appropriate. As with all Facebook groups, please be polite.

Nia Michaels and Barbara De Pirro are currently the admins, but another person or two would also be helpful.

The new page is located here:

<https://www.facebook.com/groups/NWDCMembers/>

Click on over and request to be added!

## New website under construction!

### New opportunity to update your images!

Perhaps you've previewed NWdesignercraftsmen.org, when you applied for the South Lake Union exhibit. With this new website, NWDC gets a style up-date and each member gets the opportunity of a “personal page.” Check out the examples on “Members” at [www.nwdesignercraftsmen.org/](http://www.nwdesignercraftsmen.org/): click on any of the square images to see more photos and text about a particular artist.

You may send imagery and text to Eva Funderburgh ([evafunderburgh@gmail.com](mailto:evafunderburgh@gmail.com)) for your page. Here's what Eva will need:

- 3-4 pictures of your work, 1500 pixels wide. jpg would be fine, but it doesn't matter too much. Title each one with the piece's title. Any font is okay.
- An artist's statement or brief bio. 125 words or so, +/- 25
- 1 square cropped picture to use as a thumbnail on the front page. Size doesn't matter very much for this one, just at least 300 or so.

Please participate! It's important that “Members” accurately reflects our membership!



**Hello NWDC!** It is great to have the 2 Facebook pages working for us! For the 500+ fans of the business page we would LOVE to see as many process shots from the studio from the past creative year.

Please send these photos with small info posts to Julie Conway [info@illuminataglass.com](mailto:info@illuminataglass.com) or CJ Hurley [cj@cjhurley.com](mailto:cj@cjhurley.com) for the Business Page announcements.

## NWDC Members: Facebook Business Site

### Social Media is key to marketing.

Steps to using the NWDC FB Page

\* Please join the NWDC Facebook Page at this link: <https://www.facebook.com/pages/Northwest-Designer-Craftsmen-NWDC/355877767779930>

\* Please send this same link to your friends to join as a fan, and to show that you are a part of an illustrious craft guild in the Northwest.

Making a FB Page for your art:

It is best to market your work with a FB Business page. You can start one by going to the HOME page and look at the left side column. You will see a category called PAGES. Click on START A NEW PAGE. From here you can operate your business page. This is truly the best practice as fans do not have to be involved in personal activity.

We will be featuring a focus of media per month on the Facebook page. Along with your regular news of studio events and art exhibitions, please note that we are going to try to drive traffic to our own websites and Facebook pages via the NWDC group page.

In the following months, please do extra posting or “liking” or “sharing” if you are working in a particular medium, there will be a month dedicated to that. Share articles about your medium or links to particular shows with artists making work in that format. Also, a great time to share something special to your practice.

Facebook posts can be more focused.

Please send an email with your info to Julie: [info@illuminataglass.com](mailto:info@illuminataglass.com) or to Barbara: [cj@cjhurley.com](mailto:cj@cjhurley.com)

January : Wood artists — post away! Share photos, articles of wood shows, and wood making techniques.

February : Fiber Artists

March : Glass Artists

April : Jewelry

May: Basketry

June: Clay/ Ceramic

July: Beadwork

August: Craft- in general

Sept: Fiber Arts/ textile

Oct: Mixed Media

Nov: Sculpture

Dec: Hand Made Gifts

Please send information regarding your artwork, shows, craft events, and other related topics to

CJ Hurley: [cj@cjhurley.com](mailto:cj@cjhurley.com)

Julie Conway [info@illuminataglass.com](mailto:info@illuminataglass.com)

## How to submit information to the NWDC newsletter

The deadline is the 15th of the month for the next month's newsletter. What is appropriate to submit? Anything in your professional life you would like to share with NWDC members: exhibits, awards, classes, art or studio sales, call for entries, etc. Be sure to include all the information: who, what, when, where & why.

How should text be formatted? Please send your information in the body of an e-mail, **not as a Word document**. The newsletter editor will copy/paste. Please, do NOT send your text in PDF files or jpeg copies of gallery postcards! The text in jpegs and PDFs cannot be copied and pasted.

What about Images? We want images! They need to be in jpeg format, 72 dpi, about 400 pixels on the longest side. Please include name, title, medium, dimensions, etc. Website addresses are great too.

The deadline is the 15th of the month. Send to Denise Snyder at: [NWDCeditor@gmail.com](mailto:NWDCeditor@gmail.com)

Presidents- Julia Lowther and Lin McJunkin

Vice President - Lin McJunkin [lin@mcjunkinglass.com](mailto:lin@mcjunkinglass.com) 360-941-6742

Secretary - Liza Halverson [liza@halvorsenclay.com](mailto:liza@halvorsenclay.com)

Treasurers - Mary Hosick <mailto:NWDCtreasurer@gmail.com>

Archivist - Sharrey Dore [s.dore@comcast.net](mailto:s.dore@comcast.net)

Education Chair - Lin Holley - <mailto:Holleyathome@gmail.com> 206-715-0932

Education Support - Steph Mader [steph@toltriverstudios.com](mailto:steph@toltriverstudios.com)

Museum Liaison - Layne Goldsmith [ms.layne@gmail.com](mailto:ms.layne@gmail.com)

Tech Support - Eva Funderburgh - [eva.funderburgh@gmail.com](mailto:eva.funderburgh@gmail.com) Bellevue Arts Museum lecture and workshop series

Exhibition Committee

Gale Lurie [galeluriepotttery@gmail.com](mailto:galeluriepotttery@gmail.com), 206 567-0511

Joyce Hayes - [hayes.joyce@gmail.com](mailto:hayes.joyce@gmail.com), 206-522-6965

Hospitality - VACANT

Hospitality for the large parties: VACANT

Membership Chair- Vacant

E-Mail Blasts - Annette Tamm [a.tamm@frontier.com](mailto:a.tamm@frontier.com) 360-299-0323

Newsletter - Denise Snyder [NWDCeditor@gmail.com](mailto:NWDCeditor@gmail.com)

Publicity and Social Media - Julie Conway [info@illuminataglass.com](mailto:info@illuminataglass.com)

Roster / Data Base - Delores Taylor - [delorestaylor@mac.com](mailto:delorestaylor@mac.com) 425-788-0817

Facebook Group - CJ Hurley - [cj@cjhurley.com](mailto:cj@cjhurley.com) and Nia Michaels and Barbara De Pirro [depirro@earthlink.net](mailto:depirro@earthlink.net)

Volunteer Coordinator - Patricia Resseguie - [NWDCvolunteers@gmail.com](mailto:NWDCvolunteers@gmail.com) 425-232-2483

Web Liaison - Trudee Hill - [trudee@trudeehill.com](mailto:trudee@trudeehill.com) 310-908-6675

Image Bank - Vacant

Rob Beishline - Instagram

## NWDC VOLUNTEERS

Don't forget to say  
"thank you" to these  
people who make  
NWDC work for you.