

[View this email in your browser](#)



Member Newsletter

Northwest Designer Craftsmen Newsletter

October 2018

Remember if you have **member news to submit for the November newsletter the deadline is October 15th**. Please send text information in the body of an email (not a pdf or postcard image) to Lisa at NWDCeditor@gmail.com. Images need to be in a **jpg format around 600 pixels** on the longest side. Please include titles and media for artworks.

Deadlines

This is the section of the newsletter where you can find upcoming deadlines all in one spot. Details about specific deadlines can be found in other sections of the newsletter.

October 15 - Nominations for NWDC Honorary or Lifetime Membership due

October 31 - New member application deadline

January 1, 2019 – 2019 Membership Dues deadline

January 7 – Pick up work at the WA State Convention Center

President's Note

President's Letter

Your Personal Involvement is Needed

When your Board of Directors met for our Annual Retreat on August 20, we carefully looked at what has been accomplished

and what worked and what did not. We then proceeded with decisions that we believe will support the mission of NWDC to promote excellence of design and craftsmanship and to stimulate public appreciation and interest in fine craft. The September and October newsletters are chock full of information about programs and activities that support NWDC's goals.



The Board currently consists of eight members because of retirements and unexpected changes in members' lives. That reduced number means that each Board member is stretched to his or her limits to manage and execute the exciting things planned for the remainder of 2018 and 2019. A few additional Board members would make an enormous difference. Are you willing to step up? Some Board roles are defined. Others are evolving.

Now we need your help. Let me repeat that just in case you missed it: We need your help!

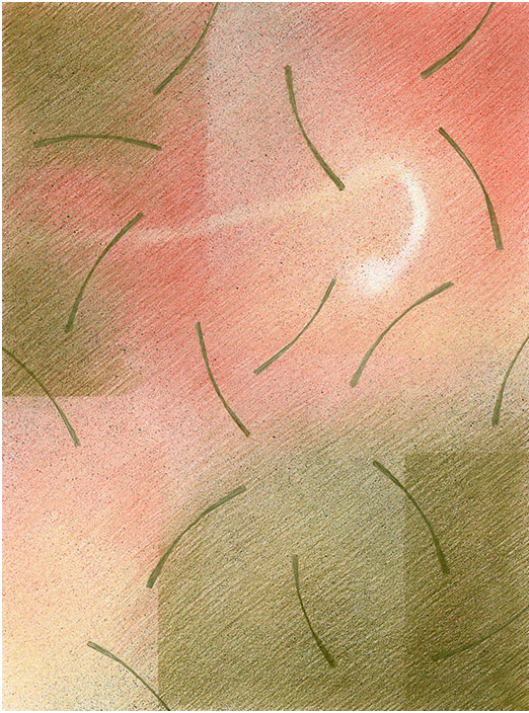
The important thing is to express interest and there probably is just the place for you. The same is true of Committee participation. We have too few doing a huge amount of work. So look carefully at your ability to help. Hopefully, you can find time in your busy life to become a volunteer with NWDC. If you see a position or program that interests you, speak up and email nwdcpresident@gmail.com. There is a place for you.

That said, I want to thank our incredibly hard working Board Members, Committee Chairs and volunteers of all kinds, past and present. You help us day after day. Without you, NWDC would not exist. We are a volunteer organization. It is all done by our membership, and for that, all members are grateful.

Member News

MUSEO Gallery **Terrain Exhibition**

NWDC members Danielle Bodine, Jan Koutsky, Brian O'Neill, and Inge Roberts, along with other artists, will be exhibiting their unique interpretations of "terrain" in the show *Terrain: Exploring a Common Ground* at MUSEO Gallery for the month of October. Please join the artists for the opening reception **Saturday, October 6, 5-7pm**. The show runs through October 29, 2018.



Jan Koutsky
Garden
colored pencil on paper



Brian O'Neill



Inge Roberts
The Terrain Behind. And Now, 2018
porcelain and wire
12" x 20" x 6"



Danielle Bodine
Floating Islands,
11" x 26" x 8"

MUSEO
215 First Street/P. O. Box 548
Langley, WA 98260
museo@whidbey.com
Tel: 360.221.7737
<http://www.museo.cc>

Distinguished Alumni Award

Paul Lewing



Paul Lewing has been selected as one of five 2018 University of Montana Distinguished Alumni of the Year. In October, Paul and his wife Ruth went to Missoula to receive the honor, which included two addresses to UM students, a luncheon with the University President, reception with School of Arts and Humanities faculty, and an awards ceremony and panel discussion. It also featured a ride in the Homecoming Parade, viewing the Homecoming football game in the President's Box and introduction on the field during halftime. A brick inscribed with Paul's name was also embedded in the Oval, the central space of the University of Montana campus. Paul is only the second ceramics graduate to have received this honor.

Great Basin Basketry Exhibit Nancy Loorem Adams

Nancy Loorem Adams won 2nd Place for *Manga Artifact*, 2016 and Honorable Mention for *Made It*, 2017 during the Great Basin Basketry Exhibit 2018 at the Convergence Conference of the Handweaver's Guild of America in Reno, NV last July.

For this exhibition, artists were encouraged to enter pieces using materials from their environment while pushing the limits of basketry.

Nancy's work was awarded cash prizes and *Manga Artifact* was published on the cover of the *Shuttle Spindle & Dyepot* magazine.



Nancy Loorem Adams
Manga Artifact, 2016
Hamburg cane, image transfer, raw silk threads, waxed linen, paper core, acrylic medium, paint and lacquer.



Nancy Loorem Adams
Made It, 2017
shredded dollar bills, cane, maple wood veneer, lacquer and acrylic media over paper mâché.

Fuller Craft Museum Jan Hopkins

Jan Hopkins' *Homage to the Circle of Life* has been accepted into the [Fuller Craft Museum](#), 455 Oak Street, Brockton, MA. *Homage* was acquired with funds generously provided by Marcia Docter.



Jan Hopkins

Homage to the Circle of Life, 2018

cantaloupe peel, meyer lemon, yellow cedar bark and waxed linen

6.5" x 12" x 12"

Photo credit: Michael Stadler

Excellence in Fibers

Jan Hopkins

Jan Hopkins' piece, *Sturgeon Moon*, category winner for Vessels Forms/Basketry in the *Fiber Art Now* magazine's *Excellence in Fibers*, will be on exhibit at the [San Jose Museum of Quilts and Textiles](#), 520 South 1st Street, San Jose, CA 95113, October 19, 2018 - January 13, 2019.

Fiber Art Now magazine highlighted innovative, contemporary textile art in their *Excellence in Fibers* issue (Vol 7, issue 2, Winter 2017). In an exhibition of the same name, the San Jose Museum of Quilts and Textiles will exhibit current trends in the categories of vessel forms/ basketry, installation, wall/ floor works, sculptural works, and wearables.



Jan Hopkins

Sturgeon Moon, 2014

sturgeon skin, bull kelp, yellow cedar bark, lunaria seed pods and waxed linen

13" x 16" x 7"

Fibers Arts Studio Opening

Jan Hopkins

Jan Hopkins and the Evergreen Longhouse would like to extend an invitation to the International Opening and Naming Ceremony of the New Fiber Arts Studio recently completed on the Indigenous Arts Campus at Evergreen State College.

The Fiber Arts Studio is a design based on the artistic vision of Maori sculptor, Lyonel Grant. The Fiber Arts Studio represents the physical embodiment of the Longhouse's decades-long relationships with Maori artists, arts organizations and government supporters in New Zealand. Lyonel Grant and Alex McArty led a strong team of carvers from New Zealand and the United States who created the extraordinary art for the Northwest and South Pacific Entrances. The interior will feature woven panels collaboratively created by the fiber artists from New Zealand, Washington State and Alaska. Recessed into the floor of the studio will be a sand-blasted granite "salmon egg," which represents the life force of the building, by Lyonel Grant. Jan Hopkins was honored to collaborate with Lyonel Grant, Rangī Kipa and Taylor on the mask that is placed at the entrance of the South Pacific Entrance.

Jan was also invited to participate in the Teachings of the Tree People: International Indigenous Fiber Artists Gathering, October 13 -16, 2018 and the *Teachings of the Tree People Exhibition* at the Evergreen State College, October 19th - December 31, 2018.



International Opening & Naming Ceremony
NEW FIBER ARTS STUDIO

Indigenous Arts Campus

The Evergreen State College, Olympia

Saturday, October 13, 2018

10 am – 2 pm

**Please join us for a day of
celebration**

- Naming ceremony of the Fiber Arts Studio
- Traditional songs and dances
- Delicious Indigenous foods



Welcome

Feel free to bring regalia to wear as we *paddle* through the Longhouse and Fiber Arts Studio as one international canoe family.

ALL ARE WELCOME TO ATTEND THIS FREE, PUBLIC EVENT.

Thank You

Our hands are raised to everyone who helped bring this studio to life!

For more information, please call 360-867-6718

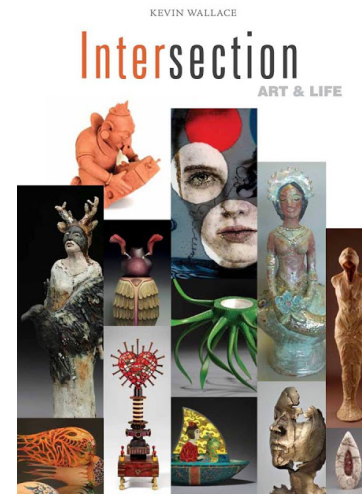


The Evergreen State College Longhouse | 2700 Evergreen Parkway NW | Olympia, Washington 98505
evergreen.edu/longhouse | longhouse@evergreen.edu | (360) 867-6718

Intersection, Art & Life book Jan Hopkins

Jan Hopkins is included in a new book, Intersection, Art & Life, by Kevin Wallace. Art can seem very separate from our daily lives today and, as our society careens its way through change and conflict, it may seem increasingly irrelevant. Art advocate, Kevin Wallace, Director of the Beatrice Wood Center for the Arts,

provides reminders of how and why we thrive when we connect art and life, including first-person insights from 150+ contemporary artists like Binh Pho, Kay Sekimachi, Avital Sheffer, Lino Tagliapietra, Jan Hopkins, Beatrice Wood, and dozens more. Throughout history, art was naturally intertwined with people's daily lives: a bowl for water, a carving to record a war, objects to capture religion and identity. This handbook juxtaposes our past with "big ideas" relating to contemporary art, helping to demystify them so that we can repair the connection, and turn our lives into art.



Profusion

Carol Gouthro at Eutectic Gallery

Please join us for the opening of *Profusion* at Eutectic Gallery, 1930 NE Oregon St., Portland, Oregon. (Entrance on NE 20th)

Opening October 5, 6-9 pm.

Profusion
Carol Gouthro
Kate Maury
October 5 - 27
Opening Reception October 5
6 - 9 p.m.
1930 NE Oregon St., Portland
Entrance on NE 20th
eutecticgallery.com
(503) 974-6518
Gallery Hours:
Mon - Sat, 10 - 5:30

In the Back Room - Jan Edwards
*Stumbling into the Narrative:
Morning Drawings & Other
Small Tales*

World of Threads Festival

Lisa Flowers Ross Solo Exhibition

As part of the *World of Threads Festival* in Ontario, Canada, Lisa Flowers Ross will have a

solo exhibition in the Corridor Galleries at the Queen Elizabeth Park Community and Cultural Centre. Five large artworks in her *Leaf Stack* series will be on display during the *World of Threads Festival* exhibition and will continue to be on display through December 31, 2018.

Exhibition dates: October 13 - December 31, 2018

Opening Reception: October 20, 1-3:30 p.m. (The artist will be in attendance.)

Queen Elizabeth Park Community & Cultural Centre
2302 Bridge Road,
Oakville, Ontario, CANADA



Lisa Flowers Ross
Leaf Stack #31, 2017
hand dyed fabrics, thread
34" x 34-1/4"



Lisa Flowers Ross
Leaf Stack #20, 2016
hand dyed fabrics, thread
32-1/2" x 35-1/4"

Lanny Bergner and Carol Gouthro Featured at BAM

As part of the partnership between NWDC and the Bellevue Art Museum, NWDC artists Carol Gouthro and Lanny Bergner will be featured at BAM for the next year.

Lanny Bergner's 3-piece installation *Deep in the Primordial Abyss* was installed in September. It includes three torch treated and hand molded sheets of stainless steel mesh, each measuring 96" x 46". It is located on the second floor of BAM at the head of the stairs.

Carol's installation in the Museum's atrium includes 7 pieces from the Anthozoa Series. It was installed in August and pictures appeared in last month's newsletter.



Lanny Bergner

Deep in the Primordial Abyss

46"h x 96"w

torch treated and hand molded sheets of stainless steel mesh

Barbara Skelly Memoir Featured in Magazine



NWDC member, Barbara Skelly and her memoir, [Treasure Houses](#), was featured in the Summer 2018 edition of Stay Thirsty Magazine. Read an interview with Barbara about her memoir [here](#).

Kelp Forest Still on View Barbara De Pirro

Great news, Barbara De Pirro's *Kelp Forest* installation has been extended through this Fall!

If you haven't yet seen it in person, there's still time to see it in this incredible historical space at the Foss Waterway Seaport.



Barbara De Pirro
Kelp Forest
15ft wide x 10ft deep x 8ft long
Created using over 400 reclaimed and reinvented plastic bottles.

A HUGE thank you to Ocean Fest Tacoma, Rosemary Ponnekanti, Greater Tacoma Community Foundation & Foss Waterway Seaport for funding & hosting this project! Our warmest appreciation also to Alec Clayton for his thoughtful words highlighting this important event! <http://www.northwestmilitary.com/northwest-travel/outdoors/2018/05/Tacoma-Ocean-Fest/>

Foss Waterway Seaport
705 Dock Street, Tacoma, WA

Take a virtual stroll through the Kelp Forest...

<https://youtu.be/0yKFfk4y6M>

Exhibitions

The Contemporary Art of Pacific Northwest Crafts Opening and Reception

Sunday, October 7, 2018

Washington State Convention Center
705 Pike St.
Seattle, WA 98101

and

Facèré Jewelry Art Gallery
1420 5th Ave #108
Seattle, WA 98101



Please join fellow NWDC members for both the exhibition opening at Washington State Convention Center and a reception following at Facèré Jewelry Art Gallery just a couple blocks away. You are encouraged to invite guests and prospective members while enjoying a day in downtown Seattle. There are many restaurants and attractions nearby.

1:30 pm - Lloyd Herman, juror of the exhibition, will give a curatorial presentation at the Convention Center exhibition.

3:00-5:00 pm - Karen Lorene of Facèré Jewelry Art Gallery, and honorary member of NWDC, has graciously offered to host a reception for NWDC following the Opening in her gallery. She will have the new exhibition *Signs of Life 2018* just installed.

Exhibition Opportunity STEM + Art + Design

STEM + Art + Design

Northwest Designer Craftsmen Create
Schack Art Center

April 25th – June 8, 2019

Juror: Carie Collver, Gallery Director, Schack Art Center

Full prospectus will be on the website soon. All artists entering will have at least one piece chosen.

STEM + Art + Design, Northwest Designer Craftsmen Create will be the Schack Art Center's annual education exhibition funded by Boeing. K-12 school groups will attend the exhibition, and teachers will attend workshops around the exhibition. The theme reflects

the Washington State Schools curriculum emphasis of STEM: the integration of Science, Technology, Engineering and Math through project based educational experiences.

For this exhibition Art + Design are added to the STEM to emphasize how artists design and create works of art integrating STEM principals. Imagine a ceramic artist creating work on an electric wheel using precision measuring instruments to ensure the piece is perfectly proportioned; and then firing the piece in a highly technical kiln at temperatures specific to the clay body and glazes. All of these aspects (and more) of a ceramic artist's work are entrenched in Science, Technology, Engineering and Mathematics. Every NWDC member uses STEM techniques to create their work. Whether weaving, dyeing, metal-smithing, melting glass or creating mixed media works of art— NWDC artists are highly invested in STEM principles.

Along with each piece submitted for the exhibition, the artist will write a statement describing some of the STEM processes incorporated during the design and creation process. These descriptions will be displayed near the work as a teaching tool for students and visitors to the show.

A detailed prospectus will be available on the website soon.



Give a Helping Hand Living Treasures Project

The upcoming GLOVE show at POTS Gallery in Fremont will be a fundraiser for the NWDC Living Treasures Video Project and for our current video on sculptor, Tip Toland. Show dates are January 9-13. All gloves will sell by raffle for \$200.

CAN YOU MAKE and DONATE a GLOVE ARTPIECE?

Contact Lynn Di Nino to participate.

Below is an artwork donated by Chris Wooten.



NWDC Pilot Project for Emerging Artists

NWDC Secretary Lin McJunkin is pleased to announce progress on our pilot project to attract new, younger artists and designers to the organization. Lin has been working with longtime member Jean Tudor and her informal mentee/jewelry student, Webster Winters, to draft a pilot program and help guide our group as it moves forward.

Emerging Artists (EA) can be defined as those beginning to make their way into the working art world with intention and commitment to their craft field. This program would benefit NWDC by allowing us to recruit in post-secondary art schools and craft centers, increasing our name recognition in the art community. It will benefit the EAs by inviting them to participate in NWDC activities, and to provide some form of mentorship, with possible apprenticeships and exhibition opportunities. This is an opportunity for NWDC to

partner with the teachers, professors and gallerists of art schools and universities, increasing our networking abilities and our stature with, and relevance to, the contemporary craft and design world.

NWDC hopes to provide the following to future EAs:

1. A list of NWDC members available to help with a variety of topics, including writing resumes, grants and applications; providing references; having discussions about the business aspects of craft; mentoring on a particular medium, technique or specific project
2. Inclusion in our annual shows
3. Internships with members in their studios
4. Influential resume item and references
5. Access to an online list of resources (our website) provided by members and others in the fine craft community: reviews of books and blogs, art schools, support networks, etc.
6. Money for scholarships. We already have one scholarship recipient who will share her experiences with the group next spring.
7. Opportunity for informal critique sessions by master craftspeople

Next month, I'll detail some of the benefits we can expect will accrue to NWDC from future EAs. If you want to serve on this committee, have suggestions, questions or comments, please contact Lin McJunkin.

Membership Applications Now Open

New Member Applications Due October 31

It's time to invite professional craft persons you admire to join NWDC. A summary of who qualifies, reasons to apply, as well as application forms are now available through the NWDC website. Use the pull down menu "Information" and click on Apply for Membership.

Artists in Washington, Oregon, Idaho, Montana and Alaska, who work professionally in clay, wood, glass, metal, fiber, and/or mixed media, may apply.

NWDC Bylaws require members to:

- Be a designer, artist, or craftsperson who has achieved a high standard of artistic and technical proficiency,
- Subscribe to high ethical standards in all matters pertaining to his or her art and craft,
- Show an interest in promoting public awareness of and appreciation for design, artistry and craftwork,
- Have an interest in actively participating in the work of NWDC.

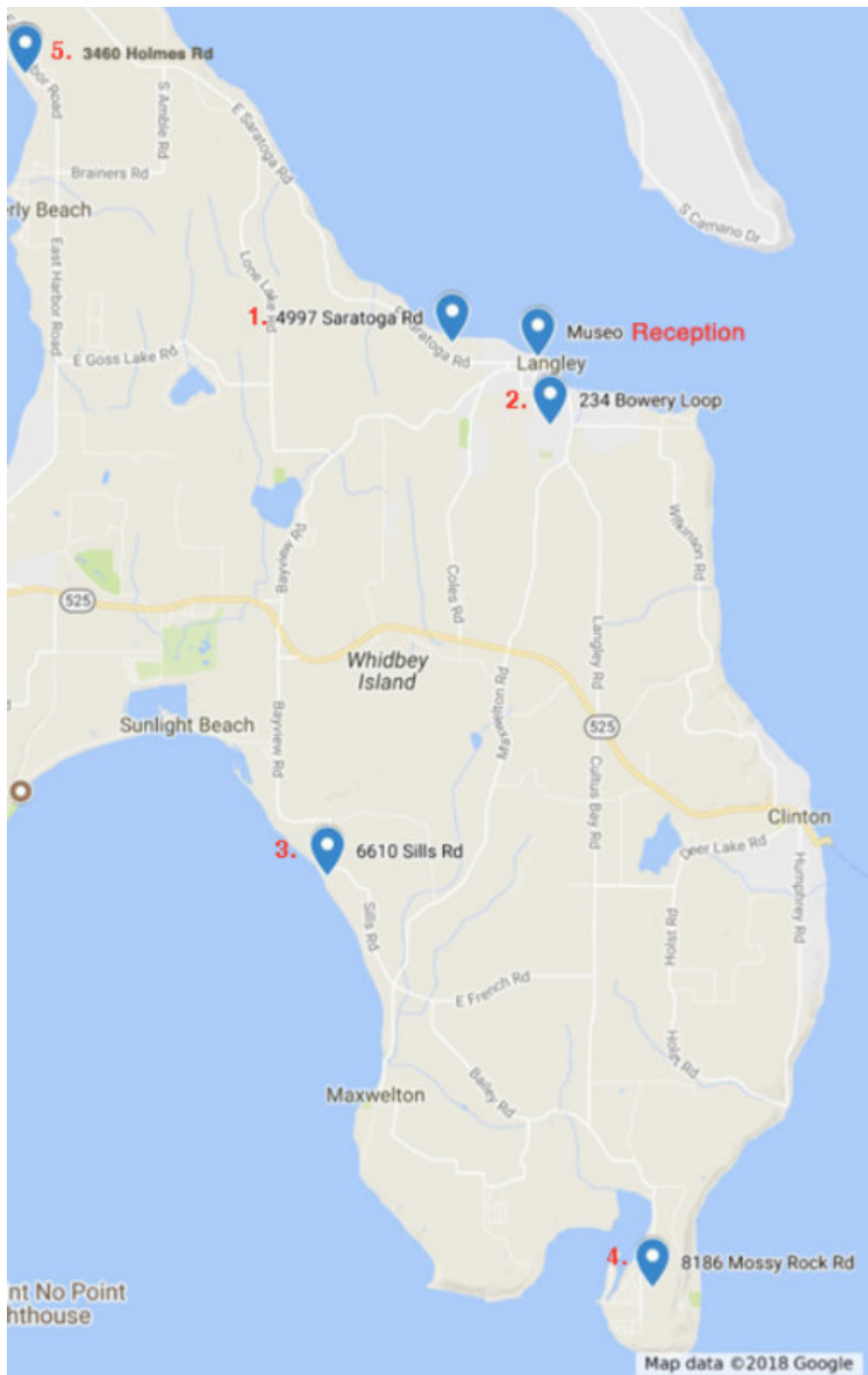
Applications are accepted from August 1 through October 31. Acceptance to NWDC is by jury requiring majority vote of the membership. Notification of acceptance is in early December. If accepted, membership dues are \$50 per year.

Applications for Lifetime and Honorary Members Due October 15

Applications for Lifetime and Honorary Members are due October 15. Qualification requirements and application forms are available on the NWDC Website under the Members Only Section. Once you enter the password, scroll down a bit to find the information and to download application forms. The earlier application deadline allows the Board to approve applications at its meeting in the first week of November.

NWDC South Whidbey Island Studio Tour October 13

Five NWDC members will have their studios open from 11 a.m. - 5 p.m. on October 13. A reception will be held at 5:30 p.m. at MUSEO in Langley. See map for locations.



STUDIO TOUR ARTISTS

1. Nancy Loorem Adams

Heron Rook Studio

I work in sculptural basketry using cane, reed and wood veneers to create woven surfaces. My newest works are evocative torso forms with interiors containing surprising elements

using, for example, silk thread, mink and silk cocoons. My new studio is in a recently completed contemporary home on the bluff overlooking Saratoga Passage with a large collection of art, all of which will be available for tour guests to view.

www.nancylooremadams.com

2. Patti King

I have just re-organized my studio so that I can do all three things I love: weaving, dyeing and stitching. I've set up my big 5' wide loom in the center of the room and plan to focus on rug weaving for the next year or so. There should be a rug in progress by October and perhaps some evidence of indigo dyeing and bojagi-making as well. I'm quite fired up after the trip to Japan in June-July for the International Shibori Symposium and hope the inspiration from that experience will be evident in my work.

3. Danielle Bodine

Having experimented in a variety of fiber techniques over the years, my current work combines basketry and surface design techniques with cast paper to create sculptures that range in size from one inch to over 8 feet. My artwork is often inspired by the views from my studio windows of the shipping lanes and waters below.

www.daniellebodine.com

4. Beth Wyatt Studios

Currently my focus is on the exploration of contrasting elements in vessel/containment structures...structures integrating my trio of media in metalsmithing, ceramics, and enameled surfaces, based in part on observation of basketry techniques and cold connection in metal. I'll have parts & pieces...work in progress.

My ceramic/enameling and metalsmithing studios are in a separate 800 square foot two story structure designed with wonderful north light fenestration at my wooded hillside home above Cultus Bay.

5. Inge Roberts

I make sculptural and functional porcelains. My studio consists of the designing/show room, the kiln room with the glazes and tools, and the outdoor working area. I'll explain how I work and will show how I shape, texture and impress the clay.

www.ingeroberts.com

Reception at Museo

5:30-7:00 Hosted by NWDC

Special thanks to Nancy Whittaker and Michael Dickter (owners)

215 First St., Langley

(360) 221-7737

Sara Owens

Sara's work can be seen at Museo in Langley before or during the reception.

Using a variety of techniques including traditional metalsmithing, needle felting, and paper mache, I create jewelry and sculptures that reflect a world filled with wondrous objects, both natural and industrial, shaped by function. My work emerges while sketching in the materials, rather than separating the design and construction phases. I fabricate, deconstruct, rearrange and combine forms creating objects that are reminiscent of natural and industrial relics.

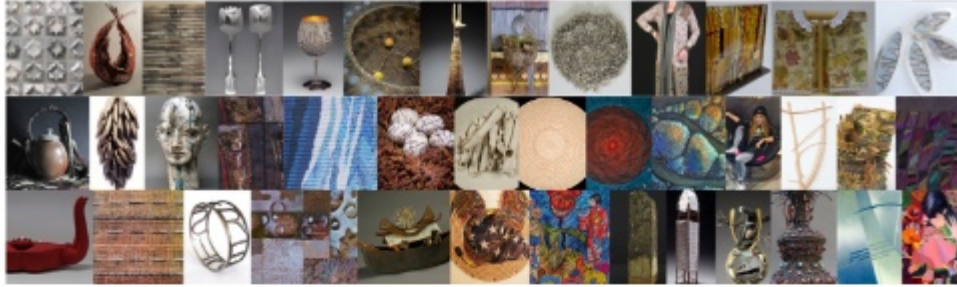
www.saraowens.net

Jan Koutsky and **Brian O'Neill** also have work in the current exhibition at Museo.

While in Langley, check out Clyde Alley where you can find sculpture by **Lin McJunkin** (with Milo White) and **Dale Reiger**, both NWDC members.

NWDC Exhibition

Washington State Convention Center



The Northwest Designer Craftsmen
are pleased to be showing at the
Washington State Convention Center



October 1 - January 4

705 Pike St, Seattle, WA 98101
7am to 10pm daily
Level 2 Main Galleria

Sunday October 7 - Everyone is invited to:
Artists Opening Reception at 1:30
Curator Lloyd Herman's presentation at 1:45
At 3:00 we will walk to Facere Gallery for a Reception
1420 5th Ave
Everyone is welcome



In Memorium
Inge Norgaard



Inge Norgaard Jensen, internationally renowned tapestry weaver and artist, passed away in late August at age 66 after a 10-month battle with cancer. A wellspring of creativity and a force to be reckoned with, Inge lived like she meant it and left an indelible mark with her artwork.

Born and raised in Denmark, Inge attended the Aarhus Art Academy and completed a four-year apprenticeship in graphic design and printing. She then went on to specialize in tapestry weaving, spending the next three years studying and apprenticing with two of the top tapestry weavers in Denmark.

Inge described her technique as “free style Gobelin,” a reference to the Gobelins Tapestry Factory in Paris, which was established by Louis XIV in 1662 and produced some of the finest European tapestries through the eighteenth century. Inge’s tapestries were woven on cotton warp with threads spaced 1 to 2 centimeters apart. With roughly 9 lines of yarn per vertical inch, her tapestries contain somewhere between 700 and 1,400 lines of yarn in total, each pulled over and under the threads of the warp and patted down by hand over the course of six to twelve months. Many of her later pieces were twice as dense.

The yarn, too, was a work of art. Inge started with raw wool, washed it, and then spun it into spools of yarn. To create the colors she wanted, she gathered indigo, blueberries, birch bark and other ingredients from nature.

One of her more recent favorites was inspired by three photographs she took in Vietnam of large fishing nets suspended above the water by poles and rope. Lois Harbaugh, former President of NWDC, wrote in the Fall 2014 Whatcom Museum newsletter, “What makes

net art is the pleasure it provokes aesthetically and intellectually. Inge's choice of imagery (rich in visual and metaphorical layers), her aesthetic sensibility (involving sensitive line and sublime color), her grand risk-taking in how she portrayed her subject – all give the viewer an opportunity to explore. It provides an absorbing experience of looking, requiring both eye and mind."

Inge's work has been displayed in over 100 exhibitions throughout the world, including over a dozen solo shows. She was awarded residencies in Ireland, Spain, Denmark and Alaska, and was a long-time member of the American Tapestry Alliance, Northwest Designer Craftsmen, Tapestry Artists of the Puget Sound, Corvidae Press in Port Townsend, and The Funen Graphic Workshop in Denmark.

Inge's artwork can be viewed at: <https://ingenorgaard.com>.



Inge Norgaard
Heimdal's Nine Mothers, 1986
tapestry, wool on cotton
56" x 92"



Inge Norgaard
Nesting, circa 2009-13
woodcut
16.75" x 16.75"

Calendar of Events

Upcoming

October 2 – Executive Committee Meeting, 3-4:30 pm

October 7 - Members' opening for *Craft in the Pacific NW* at the WA State Convention Center. Lloyd Herman speaks at 1:30 pm. A member reception will be held at Facère Jewelry Art Gallery from 3 to 5 pm.

October 13 – Quarterly Education Program: Self-Guided Tour of Member Studios on Whidbey Island from 11 – 5 pm. A social will follow at the Museo Gallery in Langley.

October 15 – Deadline for submission of nominations for Lifetime and Honorary members

October 31 – Deadline for submission of new member applications

November 6 – Executive Committee Meeting, 3-4:30 pm

November – Voting for new members and Lifetime and Honorary Members

November TBD – Guided tour of current members' work at BAM including work in the biennial exhibition BAM! Glasstastic

December 6 – Quarterly Board of Directors Meeting, 3-4:30 pm

January 1, 2019 – 2019 Membership Dues deadline

January 7 – Pick up work at the WA State Convention Center

January 9-13 - GLOVE show at POTS Gallery in Fremont

February 10 - Annual Meeting and Social. Don Myhre will give a presentation about his work.

April 25 – June 8 – *STEM + Art + Design, Northwest Designer Craftsmen Create* member exhibition at the Schack Art Center



Thank You Ron and Nancy Loorem Adams

Ron and Nancy opened their beautiful new home to the Board of Directors on August 10 for our annual Board retreat and planning session. We enjoyed a gorgeous day with sun streaming over the dining table where we worked. We lunched on the patio. The house is right on a bluff overlooking the Salish Sea off Whidbey Island. It was truly a pleasurable place to work on creating opportunities for our members for the rest of 2018 and on into 2019 and 2020.

Thanks also to Nancy for donating notecards to NWDC so that we can write thank you notes to members and supporters.

Thank You Zia Gipson

Zia has been hard at work organizing the tour of member studios on South Whidbey Island. She still found time to donate note cards to NWDC. Thank you Zia.

Barbara De Pirro Takes on Facebook

Barbara De Pirro has made our NWDC Members Facebook page a preferred place to go for news about NWDC and our members. Barbara now has volunteered to take on the NWDC Business Page so that we can share the same kind of information with the public. She will be taking over these responsibilities from Kristy Kun. Our thanks to both Barbara and Kristy.

Member Links

[NWDC Board of Directors and Volunteer Staff](#)
[Living Treasures Videos, Information and Donation Form](#)

MEMBERS:

[MEMBERS ONLY](#) portion of the NWDC website

PASSWORD:

[Members Directory](#)

[Log-in to your Member Profile](#)

You can edit your information on the website, change images, pay dues

FACEBOOK:

[NWDC Facebook Members Group](#)

[NWDC Facebook Page](#)

INSTAGRAM:

[NWDC Instagram](#)

Rob Beishline manages the Instagram account. Send images to

nwdcinstagram@gmail.com



[NWDC Website](#)



[NWDC Page](#)



[NWDC Members Group](#)



[Instagram](#)

Copyright © 2018 Northwest Designer Craftsmen, All rights reserved.

Want to change how you receive these emails?
You can [update your preferences](#) or [unsubscribe from this list](#).

