

[View this email in your browser](#)



Member Newsletter

Northwest Designer Craftsmen Newsletter

May 2018

You will find lots of events and information to absorb in this newsletter. Don't forget to send in your images by **May 5th** for the Annual Image Bank Program.

Remember if you have **member news to submit for the June newsletter the deadline is May 15th**. Please type information about the event in the body of the email (do not just add a pdf or postcard image) and send to Lisa at NWDCeditor@gmail.com with *June Newsletter Info* in the subject line. Images need to be in a **jpg format at 72 ppi around 600 pixels** on the longest side. Please include titles and media for artworks.

President's Note

You Say "Yes" to Exhibitions Survey

There was a resounding positive response to the Members Exhibition Survey completed in March. No question received less than 70% affirmative response. Here is a summary of the questions and results from the 50 members who completed the survey:

1. Are you willing to apply to themed NWDC exhibitions at major museums and galleries without guarantee of acceptance to the exhibition? These exhibitions would be juried by a well-known, independent juror who would be compensated for the work.

Yes: 46 respondents or 92%

No: 4 respondents or 8%

2. Are you willing to pay a jurying fee along with your application for themed NWDC exhibitions - to compensate a well-known juror - without guarantee of acceptance to the exhibition?

Yes: 43 respondents or 86%

No: 7 respondents or 14%

3. What is the MAXIMUM dollar amount you are willing to pay with your exhibition application to compensate a well-known, independent juror - without guarantee of acceptance to the exhibition?

\$15: 9 respondents or 18%

\$25: 21 respondents or 42%

\$35: 14 respondents or 28%

None of the above: 6 respondents or 12%

4. NWDC uses part of your annual dues to defray the expenses incurred by us in putting on an exhibition. Many galleries and museums now require a fee from artist groups to pay for their costs in mounting shows, in addition to their commission on any sales. Do you support NWDC paying galleries and museums a fee for their expenses related to putting on an NWDC exhibition?

Yes: 35 respondents or 70%

No: 15 respondents or 30%

5. Are you willing to have a pool of volunteer NWDC members' jury your application for a traditional NWDC survey exhibition if you are guaranteed to have at least one of your entries accepted for the show?

Yes: 44 respondents or 88%

No: 6 respondents or 12%

NWDC asked for volunteers to be on a members' jury panel. 27 members volunteered to be in the jury pool.

6. Would you be interested in having NWDC sponsor an online exhibition to gain exposure, attract new collectors and promote your art to a new, internet-savvy generation?

Yes: 45 respondents or 90%

No: 5 respondents or 10%

7. What other innovative ideas would you like to see NWDC employ in order to expand our Exhibition program? 19 responses with a broad range of content.

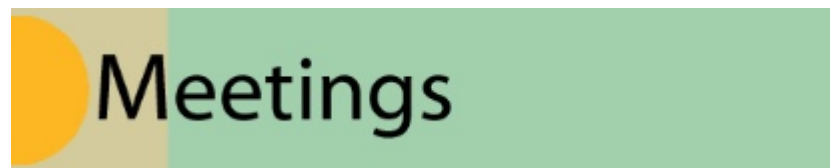
Following each of the question, members were asked to add comments. There were many ranging from the need for more advertising around our exhibitions, to suggesting that online exhibitions are not adequate for showing the materiality of craft, to requests for an NWDC booth at the Bellevue Art Fair. These wide-ranging comments will help the Board and the Exhibition Committee to continue to upgrade your experience with NWDC exhibitions.

A full summary of the survey results (redacted to remove any member names) is available on the Website in the Members Only section. Click the Exhibition Tab. You will need to enter our standard password at the end of this letter to access the document. Or use this link:

<https://www.nwdesignercraftsmen.org/member-survey/>

Thank you to all who responded. Your time is appreciated.

- Patricia Resseguie, NWDC President



Annual Image Bank Program and Potluck Social Sunday, May 20, 2018, 1-4 p.m.

Factory Luxe
3100 Airport Way South
Seattle, WA

Join us for one of our most entertaining programs of the year, the Annual Image Bank Program. Members will be showing up to five images of their most recent work, works in progress, or whatever images they want to share with fellow NWDC members. It is a great time to bring prospective members to an NWDC event so that they can see the impressive work of our members and to have a chance to meet and greet.

Bring Your Most Creative Finger Foods and Drinks To Share

NWDC Potlucks are not to be missed! Our members always bring creative home-cooked delicacies that seriously tempt the palate. Bring finger foods for nibbling during the Image Bank and after. Please bring your own cold beverage. NWDC will provide coffee and tea, cups, plates and napkins.

Please RSVP to the following email address: NWDCrsvp@gmail.com



London International Creative Competition

Naoko Morisawa

Naoko Morisawa was selected for the London International Creative Competition shortlist of 50 international artists for 2017. For more information and the full list of artists, visit [London International Creative Competition](#).



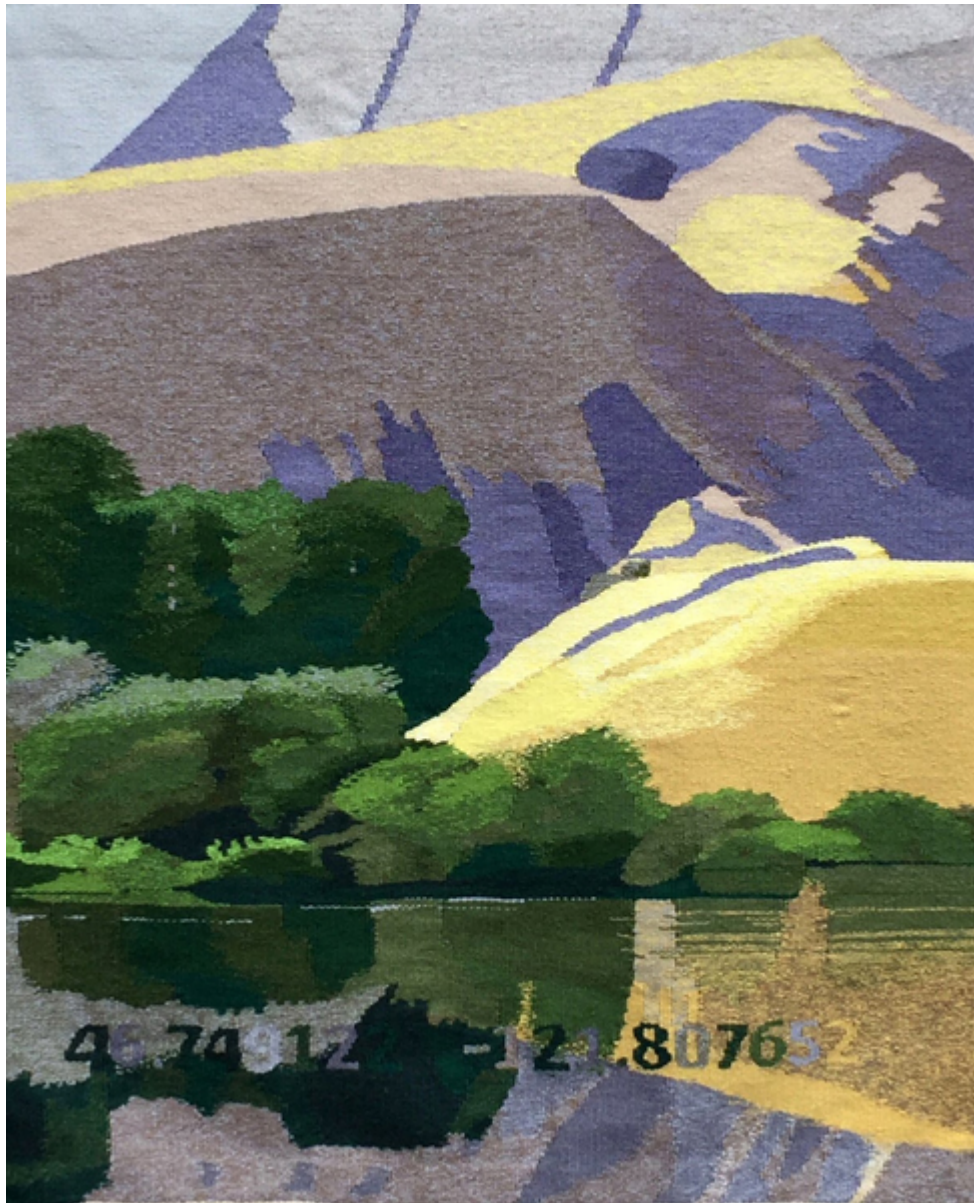
Fantastic Fibers 2018

Margo Macdonald

NWDC member Margo Macdonald's tapestry, *Yakima*, has been included in the *Fantastic Fibers 2018* exhibition in Paducah, KY.

Fantastic Fibers is an international juried exhibition that seeks to showcase a wide range of outstanding works related to the fiber medium. One of Yeiser Art Center's most engaging, innovative & colorful international exhibits, *Fantastic Fibers* is an inspirational "must see" for fine artists, quilters and textile art enthusiasts across the globe.

The exhibition runs from April 14 to June 9, 2018.



Margo Macdonald
Yakima
tapestry

Metal Workshop at Idyllwild **Joan Tennebaum**

NWDC member, Joan Tenenbaum, will be teaching a 5 day intensive class in texturing metal, entitled "Let Your Texture Tell a Story" at [Idyllwild Metals Week](#) June 10-14. Idyllwild is an arts academy near Palm Springs, CA that has many summer programs in the arts.



Joan Tenebaum
Bird Ring III-Raven In Flight
sterling silver



Joan Tenebaum
Discover the Sky
sterling, 18K gold

2018 Schack Art Centers Artists of the Year Jan and Chris Hopkins

Jan (NWDC Member) and Chris Hopkins, named Schack Art Centers 2018 Artists of the Year, will have two exhibitions beginning June 14th to September 1, 2018. You are invited to attend the opening reception scheduled for June 21, 2018.

Americans Interned: A Family's Story of Social Injustice is a view of the incarceration of Japanese Americans during World War II. Jan's family immigrated to Seattle in the early 1900s, became American Citizens, lived and thrived in the Seattle area until a forced relocation and incarceration during World War II. Jan and Chris have worked tirelessly for almost 5 years, researching and creating a conceptual and narrative exhibition, both historical and personal.

2018 Artists of the Year: Jan and Chris Hopkins is an exhibition that will be displayed on the mezzanine level at Schack. Chris and Jan will display an overview of both past and current work.

For more information on these exhibits, go to this [link](#).

Schack Art Center, [2921 Hoyt Avenue, Everett, WA](#)
(425) 259-5050.

Website www.schack.org.

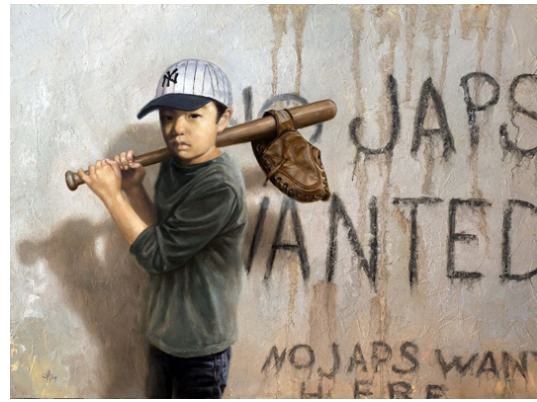


Jan Hopkins

Out of the Mouths of Babes, 2015

19" x 24"

cantaloupe & grapefruit peel, cedar bark, waxed linen, acrylic paint on hemp paper and mounted on wood panels and frame.



Chris Hopkins

The All American Boy, 2014

18" X 24"

oil on panel



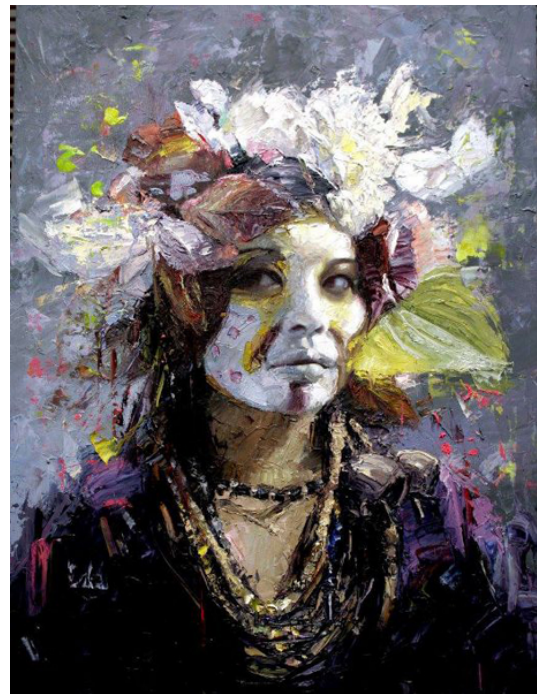
Jan Hopkins

Unbreakable,

Frida Khalo, Women Icon Series, 2015

19"h x17"w x8"d

grapefruit & melon peel, weathered hydrangea petals, eucalyptus leaves, laurel leaf, sharyn melon peel, pomegranate peel, cedar bar, ostrich shell beads and waxed linen.



Chris Hopkins

Mari, Urban Omo, 2017

18" X 24"

oil on panel

Blue/Green: color/code/context

Polly Adams Sutton

One of more than 50 artists from 15 countries, Polly Adams Sutton is included in the *Blue/Green: color/code/context* exhibition that interprets these colors and what they symbolize in myriad ways — as paintings, sculpture, ceramics and art textiles.

The multi-media exhibition is being held at browngrotta arts' barn/home in Wilton, Connecticut. A full-color catalog available is after April 28th.

If you have any further questions, please contact us at art@browngrotta.com or call us at 203.834.0623.

Exhibition Dates: April 28 - May 6



Polly Adams Sutton
Photo credit: Tom Grotta

Travel to Sri Lanka With Lars Husby

Join other NWDC members visiting Sri Lanka's arts and crafts, archaeological sites, festivals and more on **August 13-30, 2018**.

Contact Lars Husby for more information.



Vashon Island Visual Artists Studio Tour

May 5-6 & 12-13, 10 AM - 5 PM

Experience art up close and personal when Vashon Island Visual Artists (VIVA) collectively throw open their studio doors to the public!

Be sure to come to #8, Dockton Pottery, where NWDC member, Gale Lurie, and 4 other artists will be showing their work.

Studio Tour, founded in the 1970's by several dedicated artists, has grown to over 100 artists and now happens twice a year, the first two weekends in May and December.

Vashon's creative spirit is steeped in rural, Island life. The tour includes paintings, photography, ceramics, jewelry, textiles, mosaic, glass, mixed media and more.

Brochures with maps and studio descriptions are available at most Vashon Island businesses. Get a sneak preview on the Vashon Island Art Studio Tour [Facebook](#) page and on our [blog](#).

Ferry schedules can be found at Washington State [ferry website](#).



Exhibitions

2018 Exhibition Opportunity The Contemporary Art of Pacific Northwest Crafts

**Washington State Convention Center
September 29, 2018 through January 6, 2019**

NWDC will be having our next exhibition at the Washington State Convention Center in Seattle. Our show will be juried by Lloyd Herman and the installation will be designed by Larry Metcalf.

All artists entering will have at least one piece chosen and the work does not need to be for sale; the Convention Center does not take a commission. Sales will be between the artist and the prospective buyer. Each piece of artwork will have a security magnet attached to it. At the end of the prospectus, please look for a photo and explanation of the WSCC security measures.

The Prospectus and Call for Entry Form can be accessed through our website using this link <https://www.nwdesignercraftsmen.org>. Click on Members Only section. After arriving in the Members Only section, click on the Exhibitions tab. Then click on the link 2018 Exhibition Opportunity. This will bring up the Prospectus. At the bottom of the Prospectus there is a clickable button. Click on that and again use the password and you will be at the Entry Form.

Or, you can go directly to the Prospectus and Entry Form by using this link: <https://www.nwdesignercraftsmen.org/exhibition-opportunity/>.

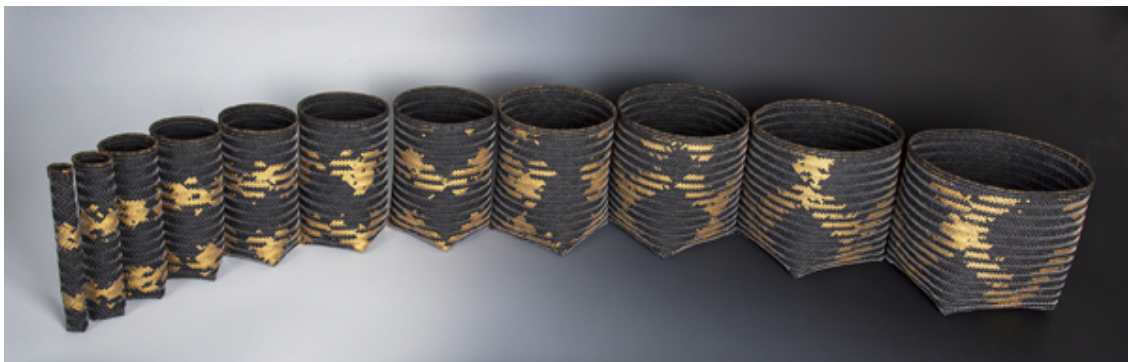
If there are any questions please contact Joyce at nwdcexhibitions@gmail.com.

National Basketry Organization

Members in Print Exhibition

The work of six NWDC members has been chosen for the inaugural National Basketry Organization *Members in Print Exhibition*. They are: Danielle Bodine, Jill Nordfors Clark, Katherine Lewis, Nancy Loorem Adams, Dorothy McGuinness, and Judy Zugish.

Juror Jane Sauer chose 37 pieces from 163 works submitted to be published in an upcoming issue of the NBO Quarterly Review.



Dorothy McGuinness

Nearly Twelve

watercolor paper, acrylic paint, waxed linen thread

9 x 8 x 48" (variable)

Photo credit: Susie Howell



Nancy Loorem Adams

Ikebana, 2016

18" h X 8" w X 8" d

cane, paper, paper clay, pigments,
gold leaf and lacquer



Jill Nordfors Clark

Condo

52" h X 10" diameter

stitched and layered hog casing, vine
rattan, lashed reed, bird's nests

Photo credit: Tom Holt



Danielle Bodine

The Changelings (grouping)

22"h x 20"w x 9"d

mulberry papers cast on baskets and funnels, coiled linen and waxed linen baskets, painted, embellished with found objects.

Photo credit: Michael Stadler



Volunteers Always Needed

NWDC is seriously short of volunteer help in some areas. Please get involved.

Volunteer Coordinator: Keep track of open positions in NWDC and recruit for members to fill them. This is a position that requires about one hour a month. For a small contribution of time, you can make a big contribution to the organization.

Graphic Designer: If you have graphic design skills, NWDC needs you on occasion. We sometimes need post cards, signage and images for the Website. Your skills are needed to assure a professional appearance for NWDC.

Social Media Advisor: NWDC wants to have a greater presence on social media. If you know anything about social media, your help would be greatly appreciated.

To volunteer for these positions, or to ask questions about them, please contact [**NWDCpresident@gmail.com**](mailto:NWDCpresident@gmail.com).

Ron Ho Premier An Educational Success

More than 200 people attended the premiere of the *Ron Ho Living Treasures* video at Broadway Performance Hall on April 15. The beautifully written and produced video received unanimous accolades. One could feel Ron's presence in the narrative of his personal journey, the remembrances of those who worked, studied and traveled with Ron, and the beautiful photography of many of his important works.

The video was a credit to the hard work of the Living Treasures Project committee, which included Ron Pascho, Julia Lowther, Larry and Liza Halvorsen, Larry Metcalf, Lynn DiNino, Gretchen Echols and Lloyd Herman.

The crowded reception featured an array of sweet treats, wine and sodas. NWDC members contributed desserts for the event. Some of those volunteers were: Nancy Lorem Adams, Ron Adams, Ruth Allan, Danielle Bodine, Lynn DiNino, Gretchen Echols, Nancy Clark, Liza Halvorsen, Larry Halvorsen, Lois Harbaugh, Nadine Kariya, Paddy McNeely, Peter Olsen, Joyce Hayes, Leon Russell, Dorothy McGuinness, Julia Lowther, and Carol Gouthro. A big thank you is also due to Thomas Batty from Portland. A good friend to Ron and Peter, he made the elegant flower arrangements that had such a serene Asian flavor.

DVDs of the video were available for sale at the reception and will be available to members at our next several events.

Pictured below:

Top Left: More than 200 people filled Broadway Performance Hall for the premiere.

Top Right: Larry Halvorsen, Julia Lowther and Dick Weiss serve wine.

Bottom: Ron Pascho, chair of the Living Treasures Project





Video of Panel Discussion Now Available on YouTube

NWDC videotaped the February 24 panel of NWDC artists discussing *Fine Art Basketry* at the Whatcom Museum in Bellingham. Fiber Arts Professor Emeritus (UW), Layne Goldsmith, moderated the panel. The event took place in conjunction with the basketry exhibition *Rooted, Revived, Reinvented: Basketry in America* open through May 6. It is an excellent exhibition well worth a visit to Bellingham.

In the video, 12 NWDC basket makers respond to questions about their use of techniques, materials and influences. It is a great education into the why and how of contemporary basket making. You can locate the video by accessing it through YouTube, searching for

Northwest Designer Craftsmen. Remember to subscribe to build NWDC's presence on YouTube.

Or you can go to the NWDC Website. Click on Home. Drop down the menu under Information and click on NWDC on YouTube. You will find the *Naturally Speaking* video as well as all of the Living Treasures video currently available to the public.

Calendar of Events

Upcoming

May 1 – Executive Committee Meetings, 3-4:30 pm by Video Conference

May 20 - Annual Image Bank Image Sharing Program, 1-4 pm. Factory Luxe, 3100 Airport Way S, Seattle. Finger food potluck and BYOB. Plates and utensils, coffee and tea provided. RSVP: NWDCrsvp@gmail.com

May 23-26 – Events in conjunction with the International Society of North American Goldsmiths' (SNAG) conference in Portland featuring the Living Treasures Project video about Ron Ho.

June 5 – Quarterly Board of Directors Meeting, 3-4:30 pm

July 3 - Executive Committee Meeting, 3-4:30 pm.

July 21 – Summer Social

August – Board Retreat, Date TBD

September 29, 2018 - January 6, 2019: “Craft in the Pacific NW” NWDC exhibition at the WA State Convention Center.

October - Self-Guided Tour of Member Studios on Whidbey Island with social time following, Date TBD.

January – Annual Meeting and Social



Nobel Golden Puts on a Party

Noble Golden never fails to find great venues for our socials. On July 21, Noble has used her skill to arrange an NWDC Social at a private home on the shores of Lake Washington. Can't get much better than that! Thanks Noble.

Gwen Lowery Takes On Image Bank

New member, Gwen Lowery, answered the call for a volunteer to create the Power Point presentation for our annual Image Bank program on May 20. Thank you Gwen. The

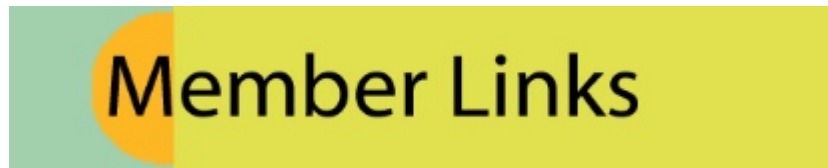
program would have been canceled without your volunteer time and computer expertise.

Lin McJunkin Designs Member Survey on Exhibitions

Our thanks to Lin McJunkin for drafting the questions for the Exhibition Survey conducted with members in March. Lin has a background in survey design that was put to good use in soliciting our members' opinions. Patricia Resseguie created the Google form that made it easy to respond.

Jean Tudor Starts Initiative

Jean Tudor, with the help of student Webster Winters, will be working on an initiative to bring students and young artists into NWDC programming. Watch for more developments in the months ahead.



[NWDC Board of Directors and Volunteer Staff](#)
[Living Treasures Videos, Information and Donation Form](#)

MEMBERS:

[MEMBERS ONLY portion of the NWDC website](#)

[Members Directory](#)

[Log-in to your Member Profile](#)

You can edit your information on the website, change images, pay dues

FACEBOOK:

[NWDC Facebook Members Group](#)

[NWDC Facebook Page](#)

INSTAGRAM:

[NWDC Instagram](#)

Rob Beishline manages the Instagram account. Send images to nwdcinstagram@gmail.com



[NWDC Website](#)



[NWDC Page](#)



[NWDC Members Group](#)



[Instagram](#)

Copyright © 2018 Northwest Designer Craftsmen, All rights reserved.

Want to change how you receive these emails?
You can [update your preferences](#) or [unsubscribe from this list](#).

