

June 2015



Northwest Designer Craftsmen

www.nwdc-online.org

Facebook: <https://www.facebook.com/pages/Northwest-Designer-Craftsmen-NWDC/355877767779930?sk=wall>

NWDC online calendar: <http://www.nwdc-online.org/calendar/>

Members' Only Site: <https://sites.google.com/site/nwdesignercraftsmen>

Meetings and Speakers



Phinney Neighborhood Center Program:

2nd Wed. of the month

Board meetings 5:30-7 (open to everyone)

Speaker 7-8 pm / Social Time 8-9 pm

Phinney Neighborhood Center location:

6532 Phinney Ave N, Seattle, WA 98103, in the lower (east) building basement

June 10 Delores Taylor

Sept 9 Julie Conway

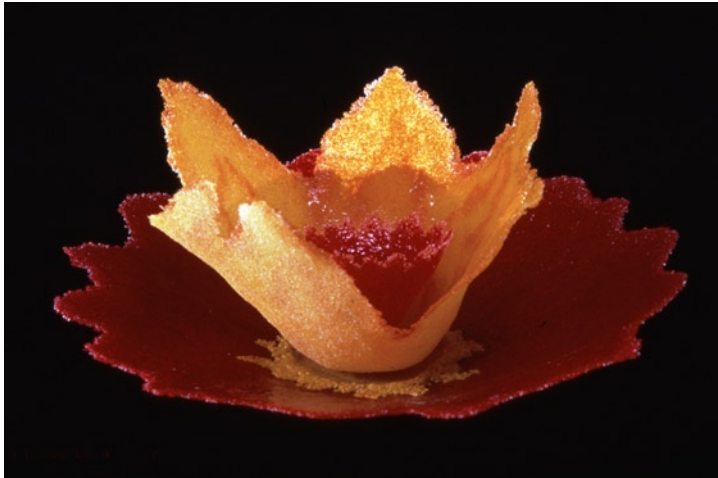
Oct 14 Cynthia Toops

Delores Taylor is the NWDC June Program Presenter



Delores Taylor is predominantly a glass artist working in Pate de Verre sculpture. She will talk about her work at Phinney Ridge on June 10th. The presentation will cover images of her work and the various media she uses for creating and planning her works in glass. This will be a look back but also forward, as she covers a recent artist residency and how that experience will evolve into a new body of work. Come join her June 10th at 7-8pm for the presentation and to socialize afterwards. NWDC presentations are open to the public. Please invite others who might enjoy any of the speakers we have at our monthly meetings.

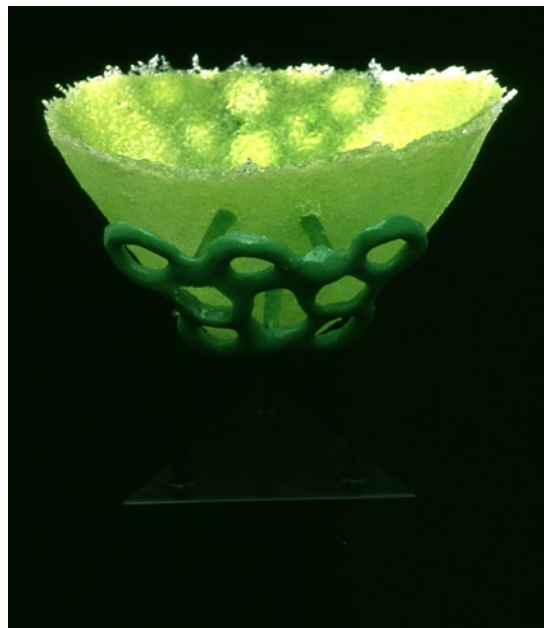
Works by Delores Taylor



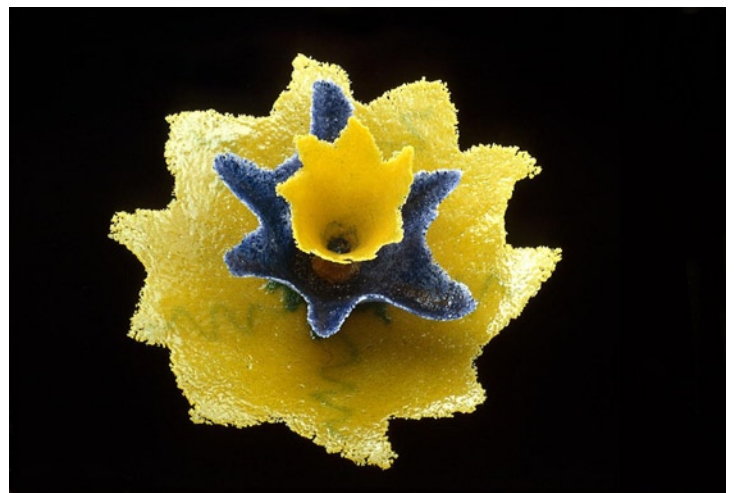
Venus



Firey By Nature



Green Vessel



Mars



Julie working with her team

Julie Conway to present in September

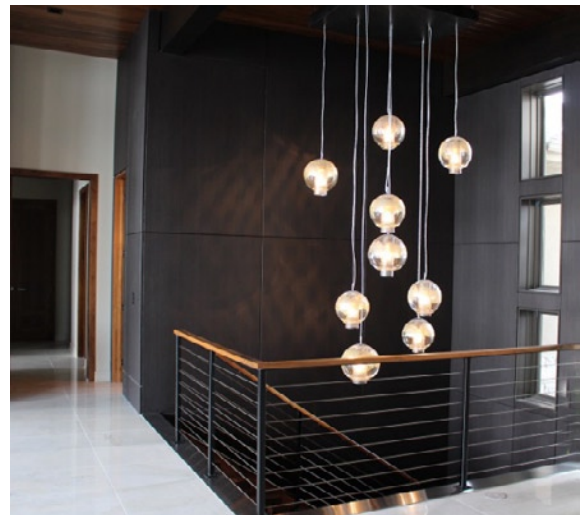
To get us all geared up for this exciting show, here are some images of her work.

Julie will be talking about her career as a glass blower, her journey working with international glass masters and how she trained, as well. She will discuss her process and how she got into design commissions. Most of her work is custom ordered and she is now collaborating on large scale projects with businesses such as the Marriott and Four Seasons Hotels. In addition, she will be talking about her work as a leader in the green community as the founder of BioGlass.org, a group of artists working on finding solutions to eco-efficient glassmaking techniques.

Her website is Illuminataglass.com



Julia assembling her chandelier Chandy



Galaxia Primo Chandelier

Photographer Needed for NWDC Presentations

We need someone who is pretty good at photographing people to photograph the monthly speakers at our NWDC meetings. The photos will be used in our newsletter and online. Lois Harbough's husband has been doing this job and it would be nice to give him a break. If you had to miss a meeting or two I am sure that could be worked out. Any takers?

NWDC Honors Lloyd Herman

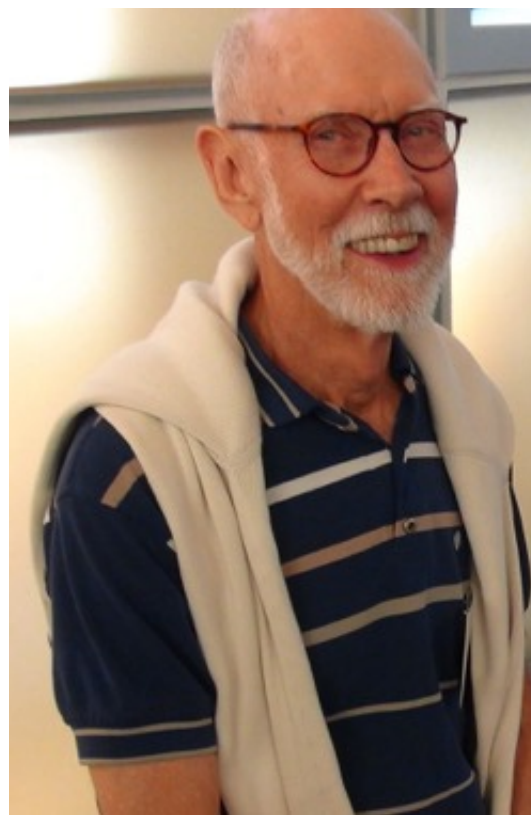
The NWDC Board voted to honor Lloyd Herman with an Honorary Member Lifetime Achievement Award.

Lloyd Herman is the Founding Director Emeritus of the Renwick Gallery, the part of the Smithsonian American Art Museum that focuses on Craft . He has been a member of NWDC since 1988.

Lloyd has brought so much to our organization: his national reputation and expertise, his curatorial judgment, his writing ability, his contacts and his willingness to participate with the membership.

It's been a blessing to have Lloyd in our midst.

We will give the Award at our 2015 Summer Social.



NWDC 2015 Potluck Summer Social

Save the date! NWDC parties are such a special part of this organization!

Saturday, August 8th

4:00-8:00

Home of NWDC member Joan Hammond and her husband, David Hays
20113 SE 30th St.
Sammamish, WA 98075

Come celebrate summer and mingle with fellow NWDC members!

Bring a favorite salad or dessert to share.

Enjoy our wonderful potluck buffet on all those beautiful handcrafted dishes.

See Joan's and David's lush garden and lovely Northwest-Japanese-Craftsmen home.

Hear NWDC pay tribute to Lloyd Herman as we present him with an Honorary Member Lifetime Achievement Award. (Get your Lloyd accolades ready -- there will be a chance to share!)

Watch for an e-mail blast closer to the date with more details.



The 17th Annual Juried Art Show Seeks Entries

The Port Townsend Arts Commission and Northwind Arts Center are seeking submissions for “Expressions Northwest,” the 17th Annual Port Townsend Juried Art Competition which takes place from July 31 – August 30, 2015 at the Northwind Arts Center in Port Townsend, WA. Artists must be at least 16 years of age, a resident of either WA, OR, ID, MT, AK or British Columbia and may submit works in both two- and three- dimensional forms, including photography. Cash prizes and additional merchandise awards will be presented.

The juror for this show will be Kathleen Moles, an independent art curator, writer and editor based in the Northwest. Kathleen has held curatorial posts at the Museum of Northwest Art (2008 – 2013) and the Whatcom Museum (2006 – 2008). In addition to curating group and solo, historical and contemporary art exhibitions, she has also managed, edited and contributed to exhibition book projects at both museums.

Further information and the prospectus can be found at the Northwind Arts Center, 701 Water St., Port Townsend or online at www.artporttownsend.org or www.northwindarts.org. Information is also available by contacting Joan Balzarini at 360-437-7922 or Nwartistjb@outlook.com or Kim Simonelli at webmaster@northwindarts.com. A non-refundable entry fee of \$45 is required for a maximum of three digital entries (no slides or prints) per artist. Entry images must be submitted online to www.OnlineJuriedShows.com. You will need to first create a free account and then follow the directions for entry into Art Port Townsend. Please proceed through all 5 steps of entry including getting a Receipt of Entry. (There is a helpful link, “How to Enter,” provided for you on the website.) The entry deadline is June 12, 2015.

EXHIBITION OPPORTUNITY

Your Exhibition Committee is working on a great opportunity! This is just a heads up, since we are currently still in the planning stage. We’re working with Peggy Weiss, who some of you know, on a 6 month (or possibly on-going) exhibition at the new Harborview campus in the South Lake Union area. This is a huge space with opportunities for wall and floor pieces, as well as outdoor spaces. We’ll get more information to you as the plans get finalized.

Gale Lurie
Exhibition Chairperson

The FaceBook Blurb / Page:

NWDC Members:

Use Facebook to Promote your art and your business -
Social Media is key to marketing.

Steps to using the NWDC FB Page

* Please join the NWDC Facebook Page at this link: <https://www.facebook.com/pages/Northwest-Designer-Craftsmen-NWDC/355877767779930>

* Please send this same link to your friends to join as a fan, and to show that you are a part of an illustrious craft guild in the Northwest.

Making a FB Page for your art:

It is best to market your work with a FB Business page. You can start one by going to the HOME page and look at the left side column. You will see a category called PAGES. Click on START A NEW PAGE. From here you can operate your business page. This is truly the best practice as fans do not have to be involved in personal activity.

We will be featuring a focus of media per month on the Facebook page. Along with your regular news of studio events and art exhibitions, please note that we are going to try to drive traffic to our own websites and Facebook pages via the NWDC group page.

In the following months, please do extra posting or “liking” or “sharing” if you are working in a particular medium, there will be a month dedicated to that. Share articles about your medium or links to particular shows with artists making work in that format. Also, a great time to share something special to your practice.

Facebook posts can be more focused.

Please send an email with your info to Julie: info@illuminataglass.com or to Barbara: cj@cjhurley.com

January : Wood artists
February : Fiber Artists
March : Glass Artists
April : Jewelry
May: Basketry
June: Clay/ Ceramic
July: Beadwork
August: Craft- in general
Sept: Fiber Arts/ textile
Oct: Mixed Media
Nov: Sculpture
Dec: Hand Made Gifts

Please send information regarding your artwork, shows, craft events, and other related topics to

CJ Hurley: cj@cjhurley.com

Julie Conway info@illuminataglass.com

Call for Facebook Posts

Reminding members that we need content sent in for the FB page for

MAY: Basketry JUNE: Clay/ Ceramic JULY: Beadwork AUGUST: Craft In General

Press Ready: this means sending in a small sentence, photos and perhaps links to your websites or to places where you are showing or to articles on line.

Please LIKE the NWDC page, Please LIKE other posts and please comment so we can start building community.

SHARE them with your friends or even BETTER on your own FB business page!

You can watch the page for your posts that will be scheduled throughout the month — and don't forget to TAG yourself in the photos! (please do this!)

Like and Comment and Share! Support your fellow artists and help us build a presence in the Social Media world.

Thanks

Julie

Email your posts to info@illuminataglass.com or Barbara @cjhurley.com

Check Our Calendar!

Don't forget our online calendar and the new links to our exhibitions!

<http://www.nwdc-online.org/calendar/index.php?/exhibitions/>

Take a look! The NWDC Website now has an exhibitions page with individual galleries for each show.

NWDC Website Update:

Calling all NWDC members to submit images for the website. You can submit up to two: one for the home-page slideshow and one for the members' gallery of your choice. If you would like to be included in the members' gallery, we will also need your artist statement (125 words or less), the gallery you would like to be included in, and your personal website address (optional). Images may be in .jpg or .tif format, at least 72dpi, and a minimum of 400 pixels wide/tall. These are minimum requirements. Feel free to send larger images, which will be formatted accordingly. Please email your files directly to the Website Liaison, Trudee Hill: trudee@trudeehill.com Questions regarding digital image formatting may be sent to Trudee as well.

Member News

May was a busy month for NWDC member Julie Conway, owner of Illuminata Art Glass Design.

A much-anticipated installation of custom glass lighting was installed at the Four Seasons Hotel in Seattle. The restaurant is opening as the newest project of phenom local chef, Ethan Stowell.

Julie headed out to Madison, WI to install a large commissioned art glass chandelier for the lobby of the impressive Ovation 309, a luxury loft condo building downtown. Her largest project to date was suspended from a 26' ceiling!

Julie then headed to New York to be part of the NYCxDesign Week. She was included in a panel presentation at the Cooper Union School of art and design. The panel was hosted by the founder of CODAworx, with a focus on the "Power of Collaboration".



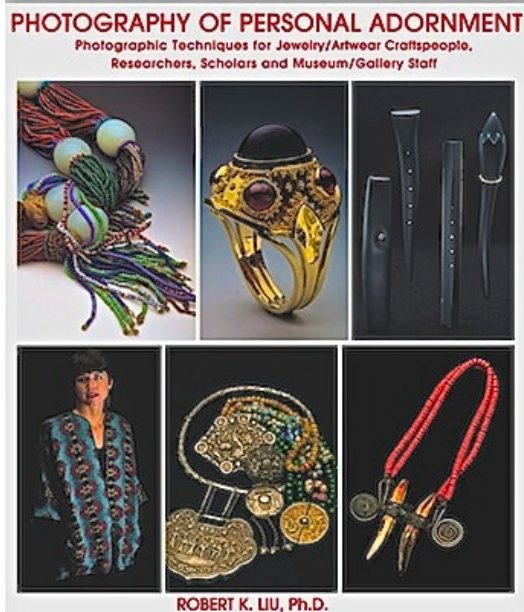
Lois Harbaugh's piece "Internet Research" was in the *2015 Kirkland Artists' Exhibition* at Kirkland Art Center, which was juried by Amy Spassov and Erik Hall.

The vessels in "Internet Research" illustrate erroneous text from the internet. One such notion was the Chinese in the Song dynasty enjoyed drinking through the nose using specially designed vessels. Harbaugh's invented version of the idea is the vessel on the left.

According to a later post on the same internet site, the notion of nose drinking cups was based on a mis-translation of an ancient text. The Chinese called the area where the spout emerged from the vessel the nose of the vessel. The ancient text was probably referring to a kendi, a spouted vessel, which one could drink from. Harbaugh's version of a kendi is on the right.



Member News Continued



A REVIEW by Nadine Kariya: PHOTOGRAPHY OF PERSONAL ADORNMENT: Photographic Techniques for Jewelry/Artwear Craftspeople, Researchers, Scholars and Museum/Gallery Staff, by Robert K. Liu, PhD, published by Ornament Magazine, 2014, 160 pages.

If you could possess only one book on the photography of personal adornment, this book should be the ONE. This definitive go-to photography manual combines instruction and topical discourse with a fabulous compendium of the art of adornment through stunning photographs by Robert Liu and others. This book is really a gift! Even if you don't do your own photography, you will be able to explain more clearly to your photographer what you need to make the best shot possible.

With a scientist's eye for thoroughness and logical progression, Liu addresses, by chapter, with explanatory photographs, these topics: the importance of being able to visualize the desired result of the photograph, lighting, photographic technique, point of view/orientation, comparison, imitations, process, in the studio, models, beads and beadwork, covers, advertisements, museums, artist's studios, clothing, environment and events. He concludes the book with a glossary and a marvelous index. It's like having Robert Liu's photographer's brain in a book. **He has thought about and photographed jewelry and clothing virtually every day for the past forty years, and has recorded what he has learned to show us how to make successful photographs in every circumstance one might encounter.**



Robert K. Liu, PhD, left a career in biomedical research at UCLA in 1975 after founding *The Bead Journal*, which changed its title to *Ornament, a Journal of Personal Adornment*, in 1978. Robert and his wife and co-editor Carolyn Benesh have devoted 40 years to the advancement of the arts of adornment. Their journal is a showplace for artists and their art, current events, and historical features. He has published 700 articles on beads and jewelry, and has been the photographer for *Ornament* since its inception. Liu's book ***Collectible Beads*** is a standard reference for the bead enthusiast. Their son, Patrick Benesh-Liu, is also a co-editor and photographer for *Ornament*. Patrick took this picture of his dad in

Beijing, 2013, while researching their article on the Shanghai Museum of Glass.



Nadine Kariya earned a BFA in Metal Design from the University of Washington, studying with John C. Marshall and Ramona Solberg. She was a manufacturing jeweler for 25 years, in downtown Seattle, as well as always continuing her jewelry art. In 2006, she retired from Regal Mfg and now devotes herself completely to jewelry art and commission work. She has appeared in Lark Publications *500 Rings* and *1000 Necklaces*, has had two features in *Ornament* magazine, and participated in the NWDC Living Treasures video of Anne G. Hauberg, among others. She is a ring specialist at Facere Jewelry Art Gallery, Seattle. She has been an NWDC member since 1975.

Member News Continued

Jean Tudor has been appointed to The Enamelist Society board to fill the term until December 31st. Jean has served on the board several times and has also served as president for this group which is international in scope.

The Enamelist Society 2015 conference will be held at Montserrat College of Art, Beverly, Ma.

Pre-conference workshops: August 5-7, 2015.

Conference: August 8-9.

Post-conference workshops: August 10-12

Exhibition at The Montserrat College of Art, Summer 2015. At Worcester Center for Crafts and Anna Maria College in Fall 2015. At League of New Hampshire Craftsmen and McGowan Fine Art, Concord, NH in Winter 2016.

On-line Registration for the conference and workshops is open until July 6, 2015. After July 6 please register in person at the conference.

For workshop and conference information log on to www.enamelistociety.org, click on Activities, and then on Conference.

Jean will be teaching a class in raku-fired enamels at the Grunewald Guild in Plain, WA. (near Leavenworth) June 22 - June 28 this year. For more information see www.gruneguild.com, click on Programming, then Summer Program 2015, and find schedule for June.

Basic enameling processes will also be taught by Jean at the Grunewald Guild, Sunday Oct. 25 through Saturday, Oct. 31st

Contact Jean Tudor and her business Glass on metal at www.jeantudorenamel.com

Lois Harbaugh's piece "Spoon de Plume" was in the Washington Clay Association show at Pottery Northwest: "Get the Scoop," juried by Jen Allen.



Shown beneath the show title is the mastermind of the show: NWDC member and President of Washington Clay Association, Deb Schwartzkopf.

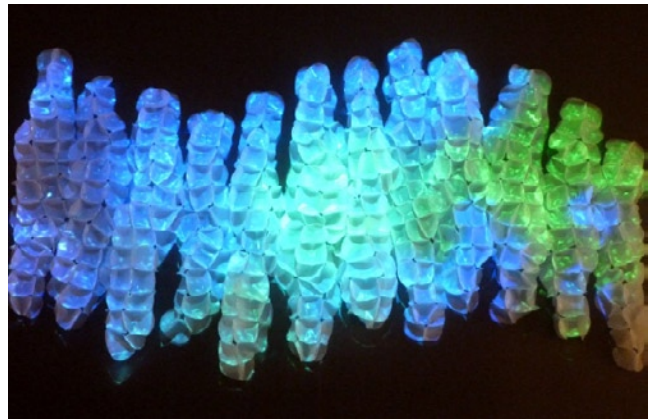
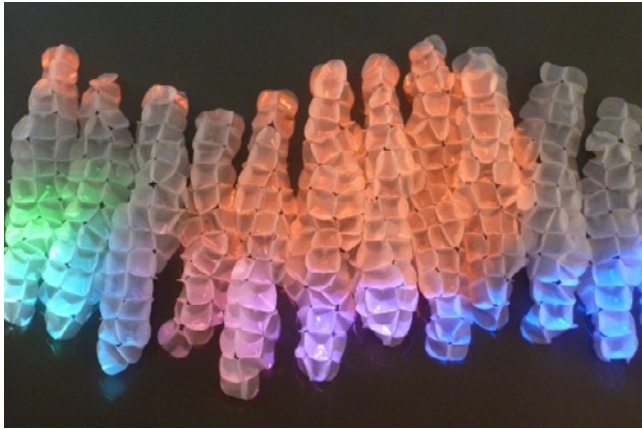
Member News Continued

New NWDC Member Barbara De Pirro's installations at two venues.

"Saving the Environment: Sustainable Art Exhibit at Schack Art Center"

"Metamorphosis: Light & Movement," Barbara De Pirro & Joe Walker

"An installation comprised of a series of cellular forms, pulsing with movement, each representing a metamorphosis, a transformation from the humble into the exceptional, a promise of new life. As nature creates life cell by cell, so De Pirro created these sculptures. Reclaiming hundreds of plastic bottles, she began by hand cutting each into individual shapes then meticulously stitched them together to create an organic structure. Joe Walker weaving his digital magic, projects imagery into the surface, creating the illusion of life within." Video: <https://youtu.be/FnP9ubL2TZA>



"Roots & Vines," Barbara De Pirro "A mysterious unexpected form has taken root, its fibrous tendrils clinging to the surface, reaching outward into the landscape. Inspired by nature's ability to regenerate, De Pirro developed methods that mimic these plant structures, using an invasive fiber as her medium. She collected hundreds of post consumer plastic bags from the local communities, cut them into strips; and then painstakingly crocheted individual vines that were woven into this sinuous form."



Member News Continued

Barbara has also been commissioned to create an entry installation titled “Flourish” for this year’s Lake Oswego Festival of the Arts. This year’s theme is “*On the Fringe: Today’s Twist on Fiber Art.*” (note: see attached images) June 26-28

Lake Oswego Festival of the Arts
Lakewood Center for the Arts
368 S. State Street, Lake Oswego, OR



“Paper Transformed” at the Northwind Arts Center

NWDC members Dona Anderson, Danielle Bodine, Zia Gipson, Lois James, and Dorothy McGuinness will be participating in a group show, “*Paper Transformed,*” along with other paper artists at the Northwind Arts Center in Port Townsend. Artists’ work are shown on this and the following pages.

Please join the artists for the opening reception on July 4 from 5:30-8pm.

The show runs from July 3 – 26, 2015.

July 12 1-2 pm gallery talk “Why Paper?” 2-4pm demonstrations and children’s mini paper workshops

July 11, 18, 19 Adult paper workshops



Dorothy McGuinness
“Satellite” 12x15x12”

Member News Continued

Northwind Arts Center Show continued



Danielle Bodine
"Hybrid Coral Polypus" 23"HX22"WX20"D



Lois James "High Tide" 3" squareX26"H



Dona Anderson
"Garden Acorn Squash" 10x16x16"



Zia Gipson "Crossing Paths" 14"x23"

For information:

Exhibition: <http://northwindarts.org/news/gallery-schedule/paper-transformed/>

Workshops: <http://northwindarts.org/news/workshops/>

Northwind Arts Center 701 Water Street, Port Townsend, WA 360.379.1086

Member News Continued

Sharon Rowley has three exhibits to report on.

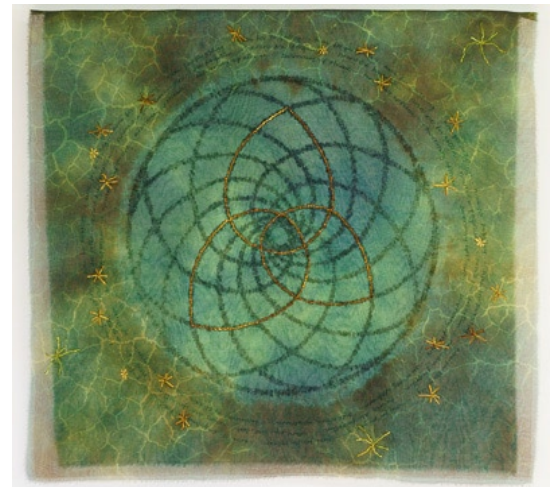
Currently underway, “*Revealing the Hidden*,” runs through June 28th at the LaConner Quilt & Textile Museum. Rowley co-juried this show, and her piece “This Heavenly Body – Memory” is on display. <http://www.contemporaryquiltart.com/ExhibitFiles/RevealingHidden.html>

Rowley’s “Dance of Joy” will be shown in “*Sacred Threads*,” a biennial exhibit in Herndon, VA. This is the fifth time she has participated in this show of spiritual work. <http://www.sacredthreadsquilts.com/>

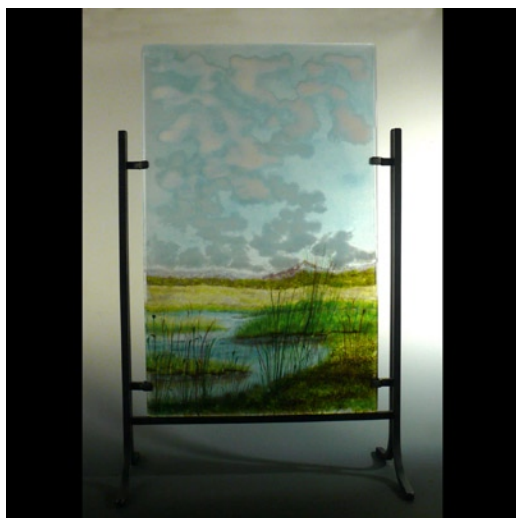
This summer, during the afternoons of July 25 & 26, Rowley will be exhibiting her work of the past 3 years at her studio in Richmond Beach. Save the dates and come see her new organza-covered pieces as well as outside installations of her unique prayer flags. Details will be posted on the NWDC Facebook page in June. www.rowleyart.com Each piece is 22”w x 20”h, hand-dyed silk broadcloth, organza and threads



“This Heavenly Body – Memory”



“Dance of Joy”



Steph Mader Receives Patron’s Choice Award from Anacortes Art in Bloom Exhibition

The 2nd annual Art in Bloom exhibition, hosted by the Anacortes Art Festival Association, has been tucked away for another year. It was a great success with strong art sales (proceeds support youth arts education). The show had visitors from throughout Washington, British Columbia and 11 other states.

Visitors selected NWDC member Steph Mader from Freeland, Washington as the \$500 Patron’s Choice Award Winner. Steph is a glass artist who creates landscape paintings using glass particles which she layers, building depth into her work. Pieces are often fired 8 – 10 times before completion. Congratulations Steph!

How to submit information to the NWDC newsletter

The deadline is the 15th of the month for the next month's newsletter. What is appropriate to submit? Anything in your professional life you would like to share with NWDC members: exhibits, awards, classes, art or studio sales, call for entries, etc. Be sure to include all the information: who, what, when, where & why.

How should text be formatted? Please send your information in the body of an e-mail, **not as a Word document**. The newsletter editor will copy/paste. Please, do NOT send your text in PDF files or jpeg copies of gallery postcards! The text in jpegs and PDFs cannot be copied and pasted.

What about Images? We want images! They need to be in jpeg format, 72 dpi, about 400 pixels on the longest side. Please include name, title, medium, dimensions, etc. Website addresses are great too.

The deadline is the 15th of the month. Send to Denise Snyder at: NWDCeditor@gmail.com

President - Lois Harbaugh - Lois.harbaugh@gmail.com 425-454-0098

Vice President - Joan Hammond - joan@haysys.com 425-391- 5045

Secretary - Patricia Resseguie - fibergal2@me.com

Treasurers - Loren Lukens - loren.d.lukens@gmail.com 206-935-6740

Katherine Holznecht - khartiste@hotmail.com 425-481-7788

Archivist - Sharrey Dore

Education - Lin Holley - lin@palmstogether.net 206-322-7593

Education Support - Steph Mader steph@toltriverstudios.com

Museum Liaison - Layne Goldsmith

Tech Support - Eva Funderburgh - Bellevue Arts Museum lecture and workshop series

Exhibitions - Gale Lurie

Exhibition Support - Joyce Hayes

Hospitality - VACANT

Hospitality For the large parties: VACANT

Membership - Lin McJunkin lin@mcjunkinglass.com 360-941-6742

E-Mail Blasts - Annette Tamm a.tamm@frontier.com 360-299-0323

Newsletter - Denise Snyder NWDCeditor@gmail.com

Publicity - VACANT

Roster / Data Base - Delores Taylor - delores@artglassconcepts.com 425-788-0817

Social Media - CJ Hurley - cj@cjhurley.com and Julie Conway info@illuminataglass.com

Web Liaison - Trudee Hill - trudee@trudeehill.com 310-908-6675

Image Bank - Lanny Bergner - lbergner@wavecable.com 360-229-0514

NWDC VOLUNTEERS

Don't forget to say
"thank you" to these
people who make
NWDC work for you.